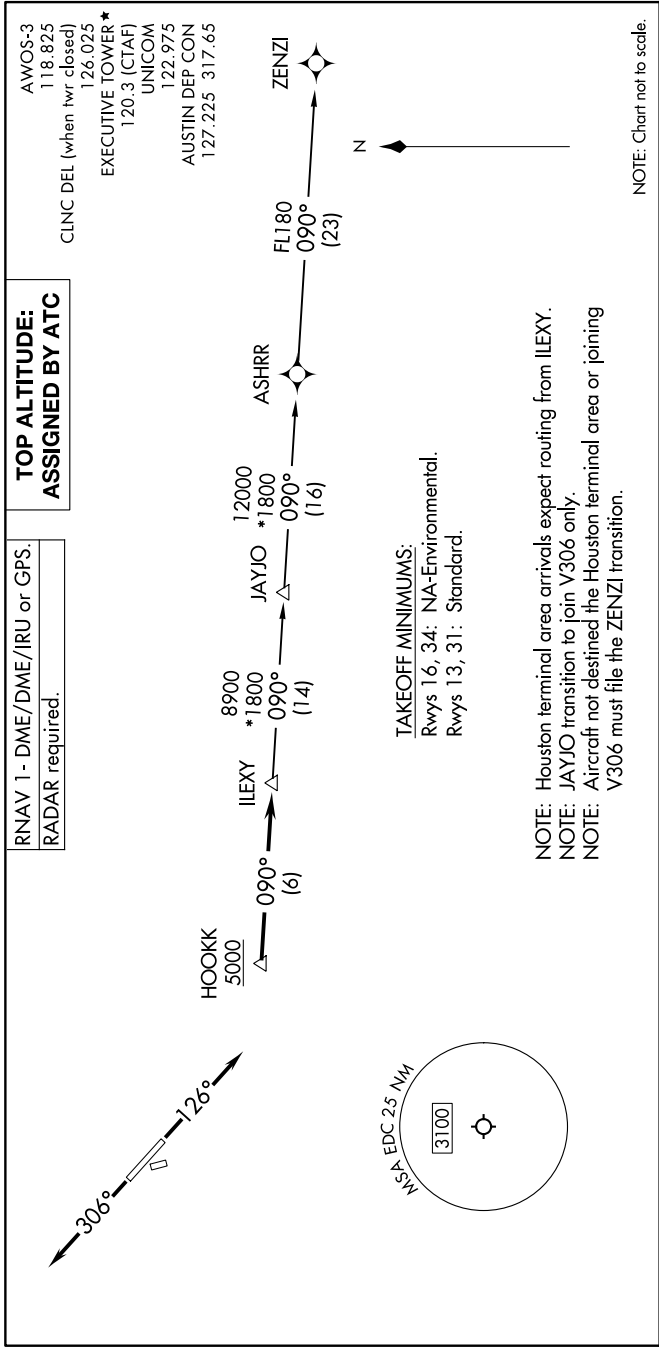


ILEXY FOUR DEPARTURE (RNAV)

SC-3, 28 NOV 2024 to 26 DEC 2024



RNAV 1 - DME/DME/IRU or GPS.
RADAR required.

**TOP ALTITUDE:
 ASSIGNED BY ATC**

AWOS-3
 118.825
 CLINC DEL (when thr closed)
 126.025
 EXECUTIVE TOWER *
 120.3 (CTAF)
 UNICOM
 122.975
 AUSTIN DEP CON
 127.225 317.65

TAKEOFF MINIMUMS:
 Rwy 16, 34: NA-Environmental.
 Rwy 13, 31: Standard.

NOTE: Houston terminal area arrivals expect routing from ILEXY.
NOTE: JAYJO transition to join V306 only.
NOTE: Aircraft not destined the Houston terminal area or joining V306 must file the ZENZI transition.

NOTE: Chart not to scale.

DEPARTURE ROUTE DESCRIPTION

TAKEOFF RUNWAY 13: Climb on heading 126° or as assigned by ATC for vectors to cross HOOKK at or above 5000, thence. . . .
TAKEOFF RUNWAY 31: Climb on heading 306° or as assigned by ATC for vectors to cross HOOKK at or above 5000, thence. . . .
 . . . on track 090° to ILEXY, then on transition. Maintain altitude assigned by ATC. Expect filed altitude 10 minutes after departure.

JAYJO TRANSITION (ILEXY4.JAYJO)
ZENZI TRANSITION (ILEXY4.ZENZI)

SC-3, 28 NOV 2024 to 26 DEC 2024

ILEXY FOUR DEPARTURE (RNAV)