

WAAS CH 70637 W01A	APP CRS 008°	Rwy Idg 4501 TDZE 67 Apt Elev 67
--	------------------------	---

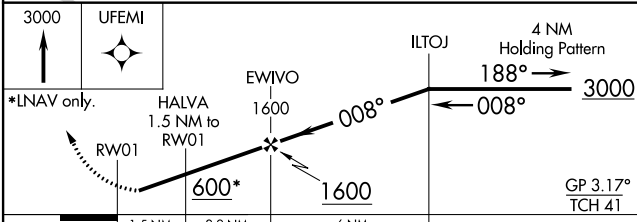
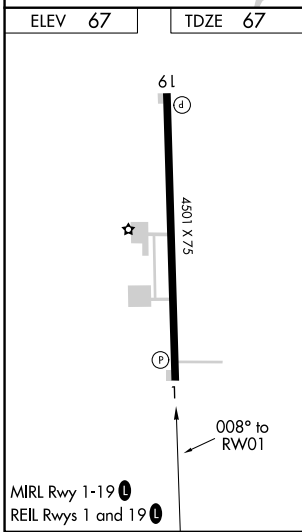
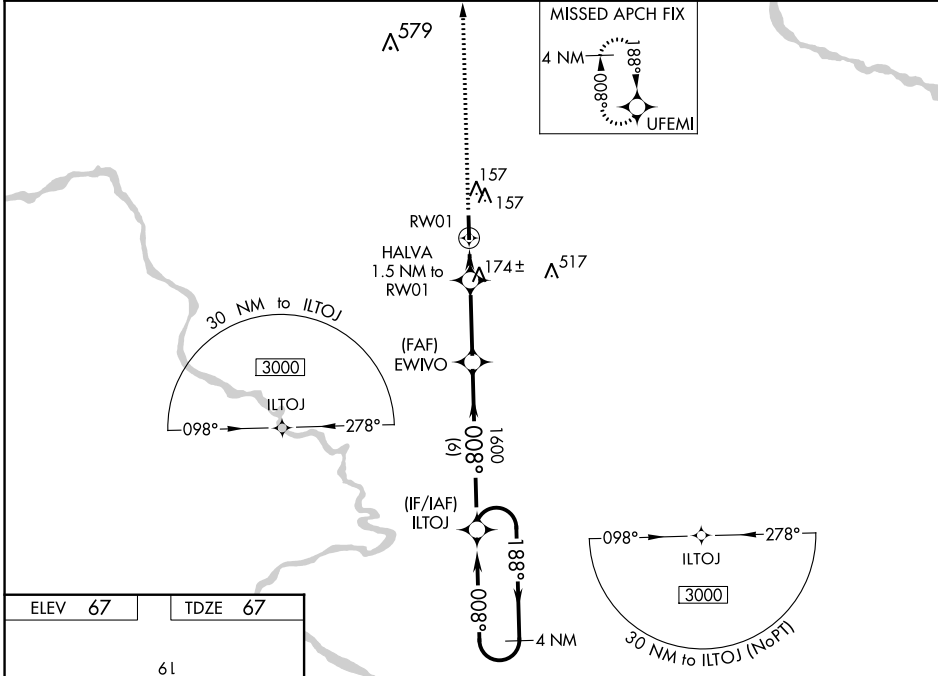
RNAV (GPS) RWY 1

TRI-COUNTY AT HENRY JOYNER FLD (ASJ)

⚠ **⚠** DME/DME RNP-0.3 NA. Night Landing: Rwy 1 NA. When local altimeter setting not received, use Franklin altimeter setting and increase all DA 67 feet and all MDA 80 feet; increase LPV all Cats visibility 1/8 mile, LNAV Cats C/D visibility 3/8 mile and Circling Cat D visibility 1/4 mile. Baro-VNAV NA when using Franklin altimeter setting. For uncompensated Baro-VNAV systems, LNAV/VNAV NA below -15°C (5°F) or above 54°C (130°F). Helicopter visibility reduction below 1 SM NA.

MISSED APPROACH:
Climb to 3000 direct UFEMI and hold, continue climb-in-hold to 3000.

AWOS-3 119.075	WASHINGTON CENTER 123.85 279.65	UNICOM 122.8 (CTAF)
--------------------------	---	-------------------------------



3000	UFEMI	ILTOJ	4 NM Holding Pattern	188°	008°	3000	GP 3.17°	TCH 41
*LNAV only.	HALVA 1.5 NM to RW01	EWVVO 1600	ILTOJ	008°	1600			
	1.5 NM	2.9 NM	6 NM					
CATEGORY	A	B	C	D				
LPV DA		359-1	292 (300-1)					NA
LNAV/VNAV DA		322-1	255 (300-1)					NA
LNAV MDA		440-1	373 (400-1)					
C CIRCLING	580-1	513 (600-1)	580-1½	820-2½	513 (600-1½)	753 (800-2½)		

SE-2, 28 NOV 2024 to 26 DEC 2024

SE-2, 28 NOV 2024 to 26 DEC 2024