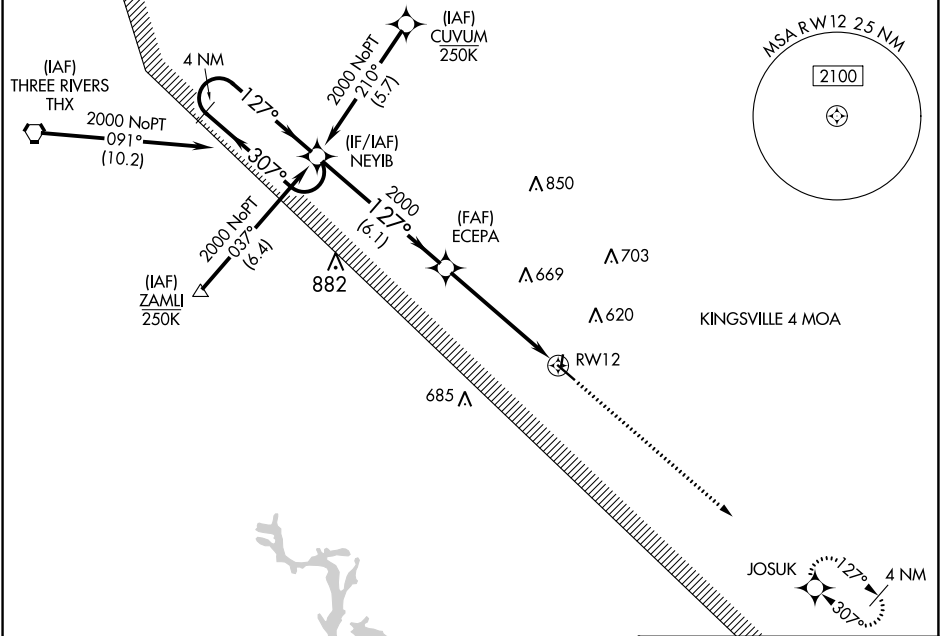


WAAS CH <b>49241</b> <b>W12A</b>	APP CRS <b>127°</b>	Rwy Idg TDZE <b>268</b> Apt Elev <b>273</b>	<b>4553</b>
--	------------------------	---	-------------

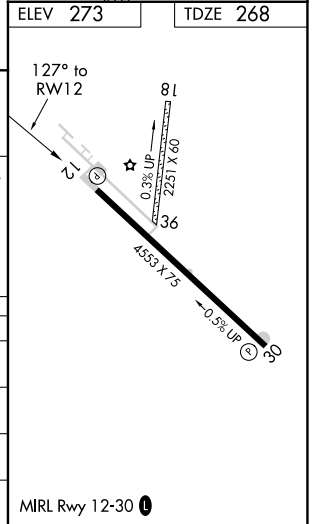
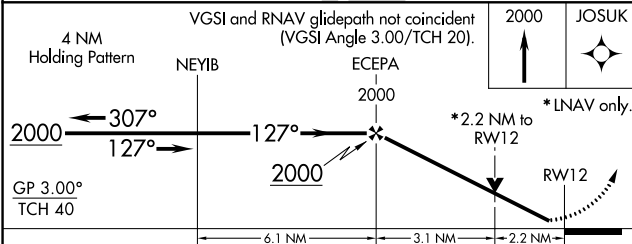
# RNAV (GPS) RWY 12

BEEVILLE MUNI (B.E.A)

RNP APCH. ▼ For uncompensated Baro-VNAV systems, LNAV/VNAV NA below -15°C (5°F) or above 54°C (130°F). Circling Rwy 18 and 36 NA at night. Rwy 12 helicopter visibility reduction below ¾ SM NA.	MISSED APPROACH: Climb to 2000 direct JOSUK and hold.	
AWOS-3 <b>118.675</b>	HOUSTON CENTER <b>134.6 322.5</b>	UNICOM <b>122.8 (CTAF) 0</b>



ELEV 273	TDZE 268
----------	----------



CATEGORY	A	B	C	D
LPV DA	518-1	250 (300-1)		NA
LNAV/VNAV DA	880-1¾	612 (700-1¾)		NA
LNAV MDA	1000-1	732 (800-1)	1000-2 732 (800-2)	NA
CIRCLING	1000-1	727 (800-1)	1000-2 727 (800-2)	NA

SC-3, 28 NOV 2024 to 26 DEC 2024

SC-3, 28 NOV 2024 to 26 DEC 2024