

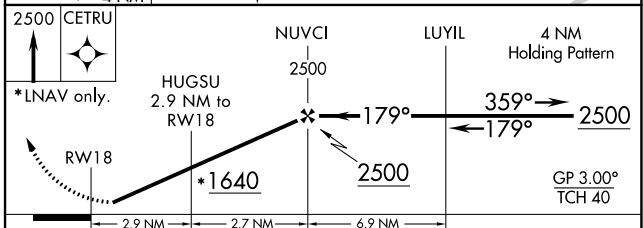
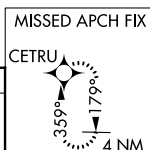
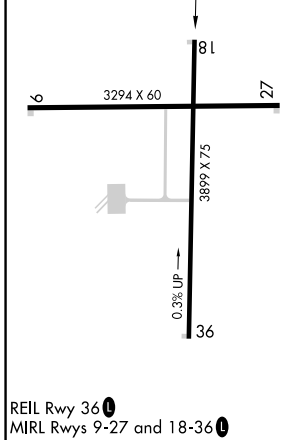
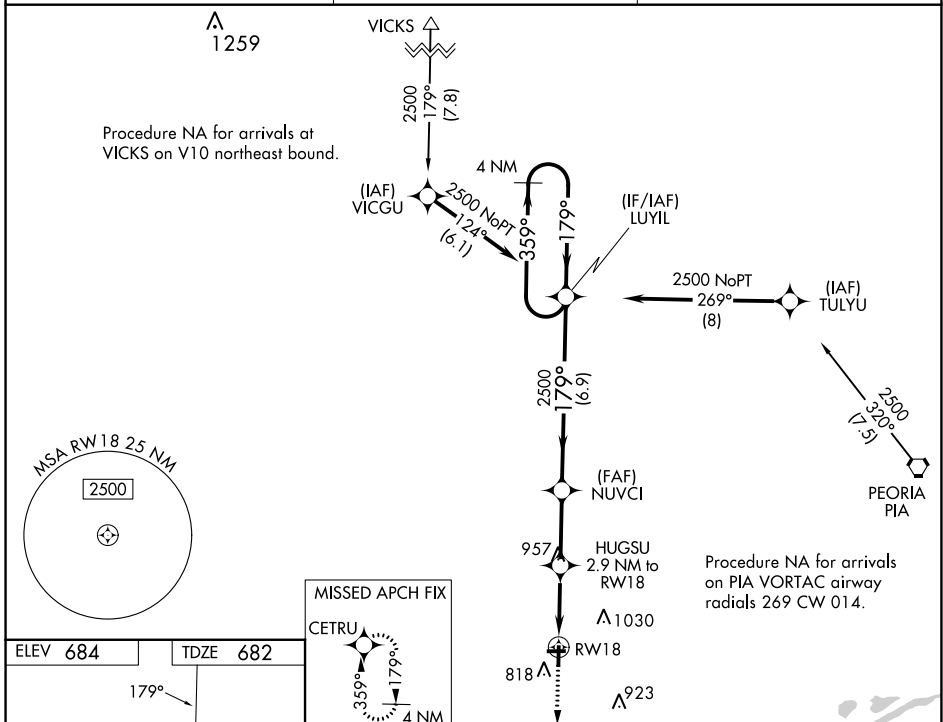
WAAS CH <b>93931</b> <b>W18A</b>	APP CRS <b>179°</b>	Rwy Idg TDZE <b>682</b> Apt Elev <b>684</b>	<b>3899</b>
--	------------------------	---	-------------

# RNAV (GPS) RWY 18

INGERSOLL (CTK)

RNP APCH-GPS.	Baro VNAV NA. For uncompensated Baro-VNAV systems, LNAV/VNAV NA below -16°C or above 54°C.	MISSED APPROACH: Climb to 2500 direct CETRU and hold.
---------------	--	--

PIA ASOS <b>126.1 282.2</b>	SAINT LOUIS APP CON <b>125.8 269.2</b>	UNICOM <b>122.8 (CTAF) 0</b>
--------------------------------	---	---------------------------------



	A	B	C	D
CATEGORY	A	B	C	D
LPV DA	995-1	313 (400-1)		NA
LNAV/VNAV DA	1128-1 $\frac{3}{8}$	446 (500-1 $\frac{3}{8}$ )		NA
LNAV MDA	1280-1	598 (600-1)	1280-1 $\frac{3}{4}$ 598 (600-1 $\frac{3}{4}$ )	NA
CIRCLING	1280-1 596 (600-1)	1440-1 756 (800-1)	1440-2 $\frac{1}{4}$ 756 (800-2 $\frac{1}{4}$ )	NA

EC-3, 28 NOV 2024 to 26 DEC 2024

EC-3, 28 NOV 2024 to 26 DEC 2024