

(OOM5.OOM) 23334

# HOOSIER FIVE DEPARTURE

AL-5902 (FAA)

INDIANAPOLIS METRO (UMP)  
INDIANAPOLIS, INDIANA

AWOS-3  
119.375  
CLNC DEL  
121.625  
INDIANAPOLIS DEP CON  
127.15 317.8

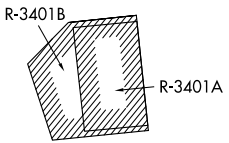
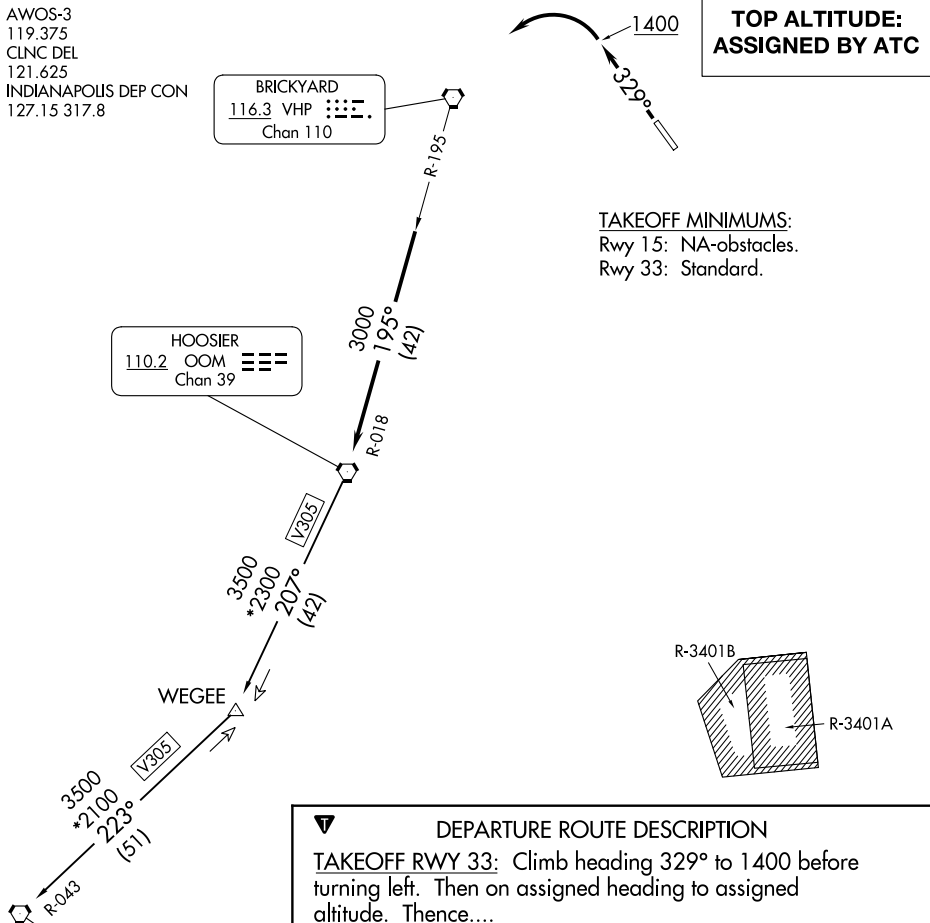
BRICKYARD  
116.3 VHP  
Chan 110

HOOSIER  
110.2 OOM  
Chan 39

POCKET CITY  
113.3 PXV  
Chan 80

**TOP ALTITUDE:  
ASSIGNED BY ATC**

TAKEOFF MINIMUMS:  
Rwy 15: NA-obstacles.  
Rwy 33: Standard.



**DEPARTURE ROUTE DESCRIPTION**

**TAKEOFF RWY 33:** Climb heading 329° to 1400 before turning left. Then on assigned heading to assigned altitude. Thence....

**DEPARTING ALL OTHER AUTHORIZED RUNWAYS:** Climb on assigned heading to assigned altitude. Thence....

....expect RADAR vectors to join VHP R-195 to OOM VORTAC then via transition or assigned route. Expect clearance to requested altitude ten minutes after departure.

**POCKET CITY TRANSITION (OOM5.PXV):** From over OOM VORTAC via OOM R-207 to WEGEE, then via PXV R-043 to PXV VORTAC.

- NOTE: RADAR required.
- NOTE: Select appropriate localizer/DME frequency/channel prior to departure.
- NOTE: Turbojets accelerate to 250K until reaching 10000, if unable advise ATC.
- NOTE: Assigned to aircraft with a requested altitude of 11000 or above.

NOTE: Chart not to scale.

EC-2, 28 NOV 2024 to 26 DEC 2024

EC-2, 28 NOV 2024 to 26 DEC 2024

# HOOSIER FIVE DEPARTURE

(OOM5.OOM) 01FEB18

INDIANAPOLIS, INDIANA  
INDIANAPOLIS METRO (UMP)