

APP CRS <b>329°</b>	Rwy Idg TDZE Apt Elev	<b>4004</b> <b>811</b> <b>811</b>
------------------------	-----------------------------	---

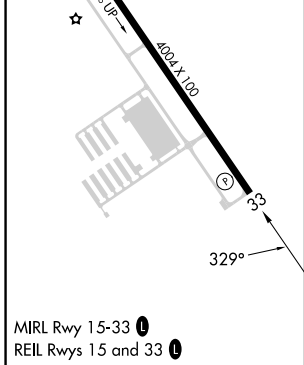
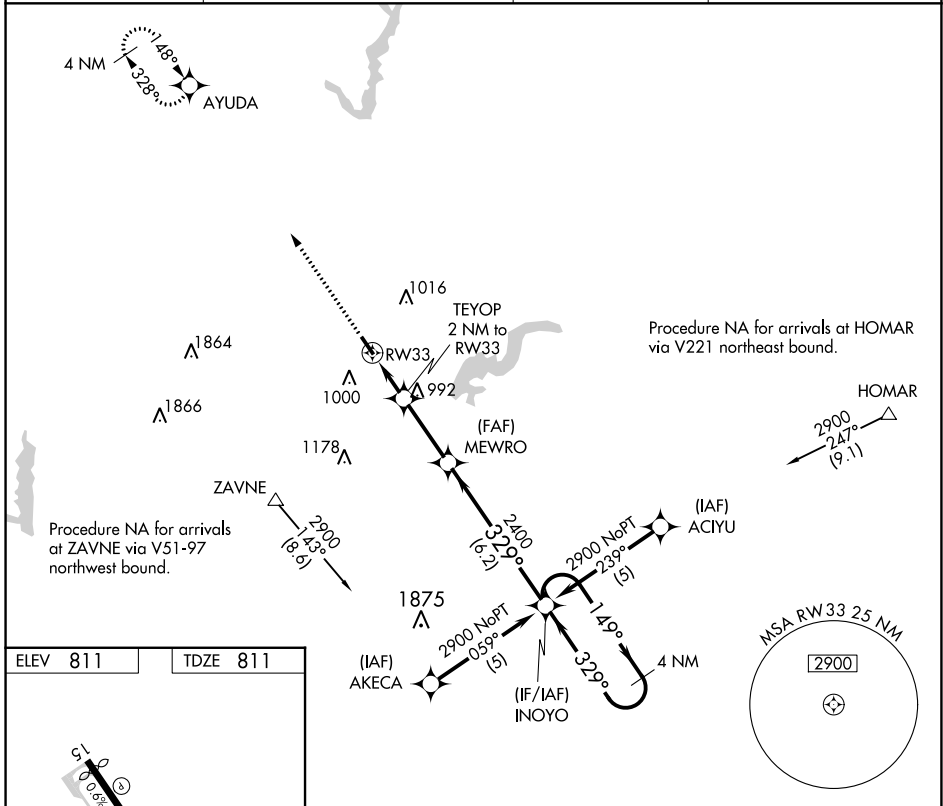
# RNAV (GPS) RWY 33

INDIANAPOLIS METRO (UMP)

**▽** DME/DME RNP-0.3 NA. When local altimeter setting not received, use Indianapolis Intl altimeter setting and increase all MDA 60 feet and LNAV Cat C visibility ¼ mile. VDP NA when using Indianapolis Intl altimeter setting. Rwy 33 helicopter visibility reduction below ¾ SM NA.

**△** NA MISSED APPROACH: Climb to 2500 direct AYUDA and hold.

AWOS-3PT <b>119.375</b>	INDIANAPOLIS APP CON <b>127.15 317.8</b>	CLNC DEL <b>121.625</b>	UNICOM <b>123.0 (CTAF) 0</b>
----------------------------	---	----------------------------	---------------------------------



2500	AYUDA	VGSi and descent angles not coincident (VGSi Angle 3.50/TCH 27).		4 NM Holding Pattern	
		TEYOP 2 NM to RWY 33	MEWRO	INOYO	
		1.1 NM to RWY 33	2.8 NM	6.2 NM	
		1480	2400	2900	
		1480	2400	2900	
		1.1	0.9	2.8	6.2
CATEGORY	A	B	C	D	
LNAV MDA	1260-1	449 (500-1)	1260-1¼ 449 (500-1¼)	NA	
<b>C</b> CIRCLING	1320-1 509 (600-1)	1340-1 529 (600-1)	1340-1½ 529 (600-1½)	NA	

EC-2, 28 NOV 2024 to 26 DEC 2024

EC-2, 28 NOV 2024 to 26 DEC 2024