

WAAS CH 58037 W32A	APP CRS 319°	Rwy ldg TDZE 30 Apt Elev 32	5004
--	------------------------	---	-------------

RNAV (GPS) RWY 32

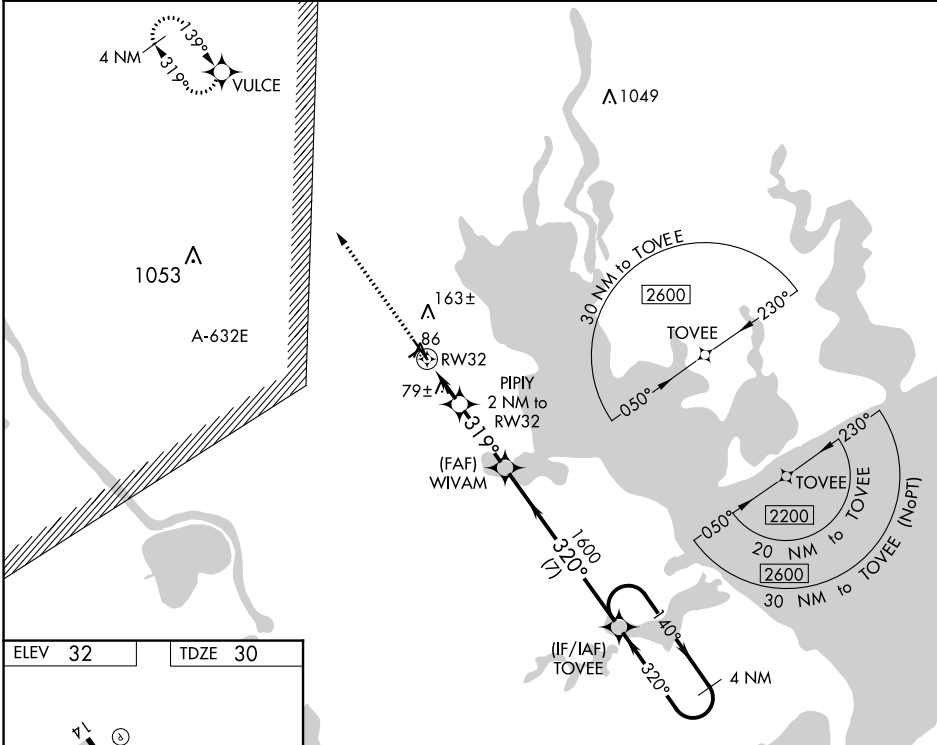
CALHOUN COUNTY (PKV)

RNP APCH - GPS.

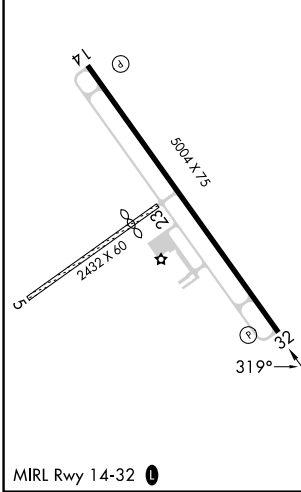
⚠ When local altimeter setting not received, use Victoria altimeter setting and increase all MDAs 60 feet and LNAV visibility Cat C ¼ SM and LP visibility Cat C ½ SM. Rwy 32 helicopter visibility reduction below 1 SM NA. Straight-In Rwy 32 NA at night, Circling Rwy 32 NA at night.

MISSED APPROACH:
Climb to 2200 direct VULCE and hold.

AWOS-3 118.275	HOUSTON CENTER 135.05 353.6	UNICOM 122.8 (CTAF) 0
--------------------------	---------------------------------------	---------------------------------



ELEV 32	TDZE 30
---------	---------



2200	VULCE	TOVEE	4 NM Holding Pattern
↑	✧	↑	↑
PIPIY 2 NM to RW32	WIVAM	TOVEE	TOVEE
≤ 3.00° TCH 45	1600	140°	2200
RW32	700	320°	← 320°
2 NM	2.8 NM	7 NM	
CATEGORY	A	B	C
LP MDA	340-1	310 (400-1)	340-7/8 310 (400-7/8)
LNAV MDA	400-1 370 (400-1)		NA
C CIRCLING	520-1	488 (500-1)	560-1½ 528 (600-1½)
			NA

SC-5, 28 NOV 2024 to 26 DEC 2024

SC-5, 28 NOV 2024 to 26 DEC 2024