

VORTAC LCH 113.4 Chan 81	APP CRS 060°	Rwy Idg 2700 TDZE 18 Apt Elev 18
---------------------------------------	------------------------	---

VOR/DME or GPS RWY 7

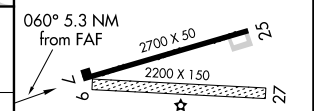
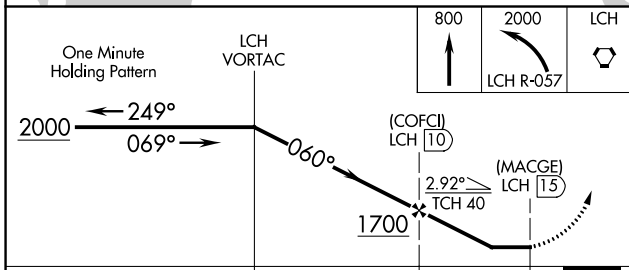
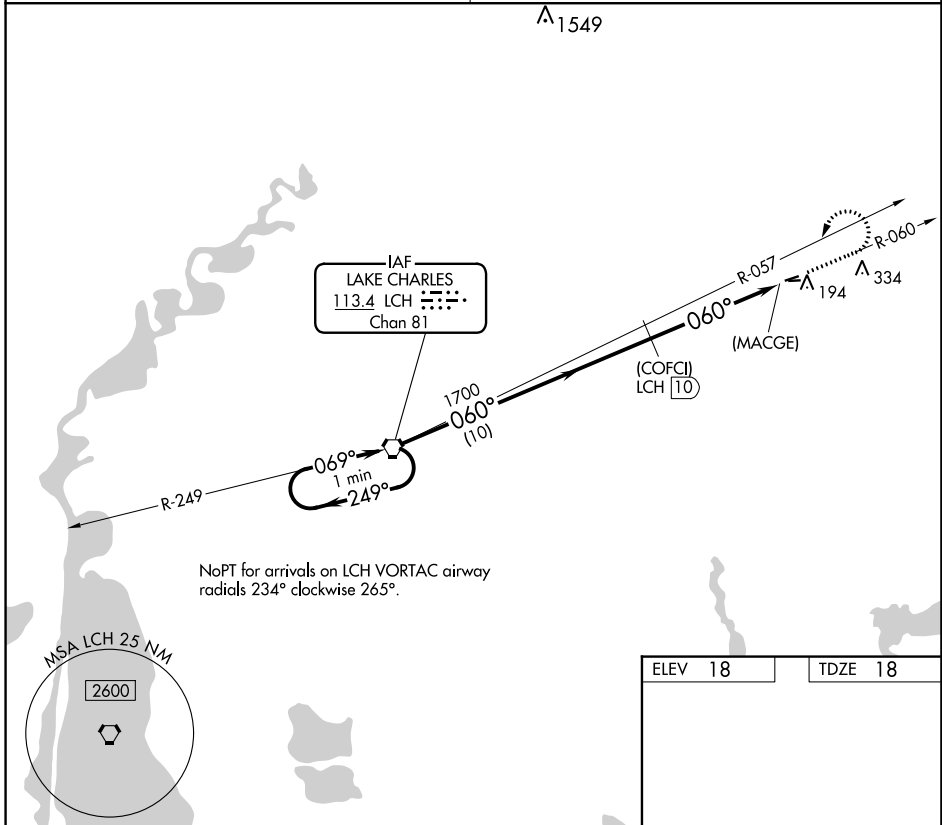
WELSH (6R1)

▼ Use Lake Charles altimeter setting. Procedure NA at night.
▲ NA Circling NA to Rwys 9 and 27.

MISSED APPROACH: Climb to 800 then climbing left turn to 2000 via LCH R-057 to LCH VORTAC.

LAKE CHARLES APP CON ★ **119.8 282.3**

UNICOM **122.8** (CTAF)



CATEGORY	A	B	C	D
S-7	540-1	522 (600-1)		NA
CIRCLING	600-1	582 (600-1)		NA

ELEV	18	TDZE	18
MIRL Rwy 7-25			

SC-4, 28 NOV 2024 to 26 DEC 2024

SC-4, 28 NOV 2024 to 26 DEC 2024