

| | | |
|--|------------------------|---|
| WAAS CH 77810 W17A | APP CRS 162° | Rwy ldg 5003 TDZE 117 Apt Elev 121 |
|--|------------------------|---|

RNAV (GPS) RWY 17

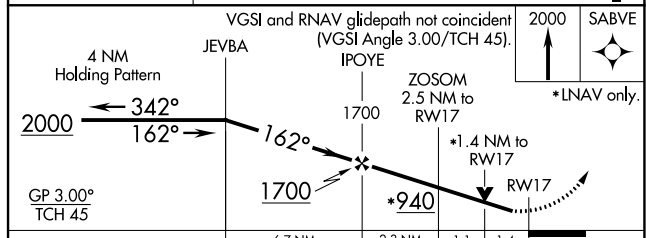
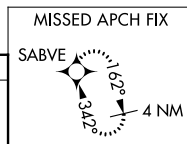
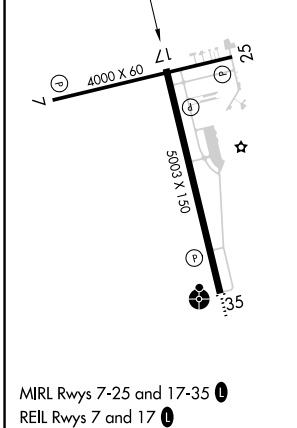
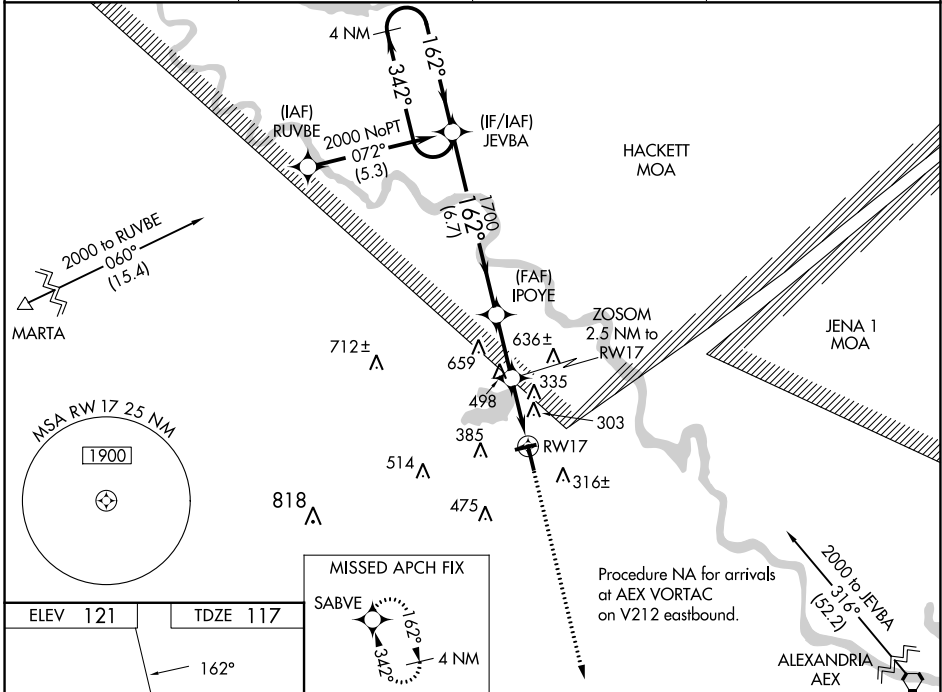
NATCHITOCHES RGNL (IER)

RNP APCH.

▼ For uncompensated Baro-VNAV systems, LNAV/VNAV NA below -15°C or above 54°C.
 ▲ Visibility reduction by helicopters NA. When local altimeter setting not received, use Alexandria Intl altimeter setting: Increase LPV DA to 458 feet and visibility all Cats 3/8 SM; increase LNAV/VNAV DA to 749 feet and visibility all Cats 3/8 SM; increase all MDA 100 feet and LNAV Cat C visibility 3/8 SM and Circling Cat C visibility 1/2 SM. Baro-VNAV and VDP NA when using Alexandria Intl altimeter setting.

MISSED APPROACH: Climb to 2000 direct SABVE and hold.

| | | | |
|--------------------------|------------------------------------|-----------------------|---------------------------------|
| AWOS-3 119,025 | POLK APP CON 125.4 302.2 | GCO 135,075 | UNICOM 122.8 (CTAF) 0 |
|--------------------------|------------------------------------|-----------------------|---------------------------------|



| CATEGORY | A | B | C | D |
|--------------|-----------|-----------------|------------------------------|----|
| LPV DA | 367-3/4 | 250 (300-3/4) | | NA |
| LNAV/VNAV DA | 658-1 7/8 | 541 (600-1 1/8) | | NA |
| LNAV MDA | 620-1 | 503 (500-1) | 620-1 3/8 503 (500-1 1/8) | NA |
| CIRCLING | 800-1 | 679 (700-1) | 860-2 739 (800-2) | NA |

SC-4, 28 NOV 2024 to 26 DEC 2024

SC-4, 28 NOV 2024 to 26 DEC 2024