

WAAS CH 40340 W35A	APP CRS 346°	Rwy Idg 3503 TDZE 665 Apt Elev 665
----------------------------------------	------------------------	---------------------------------------------------------------

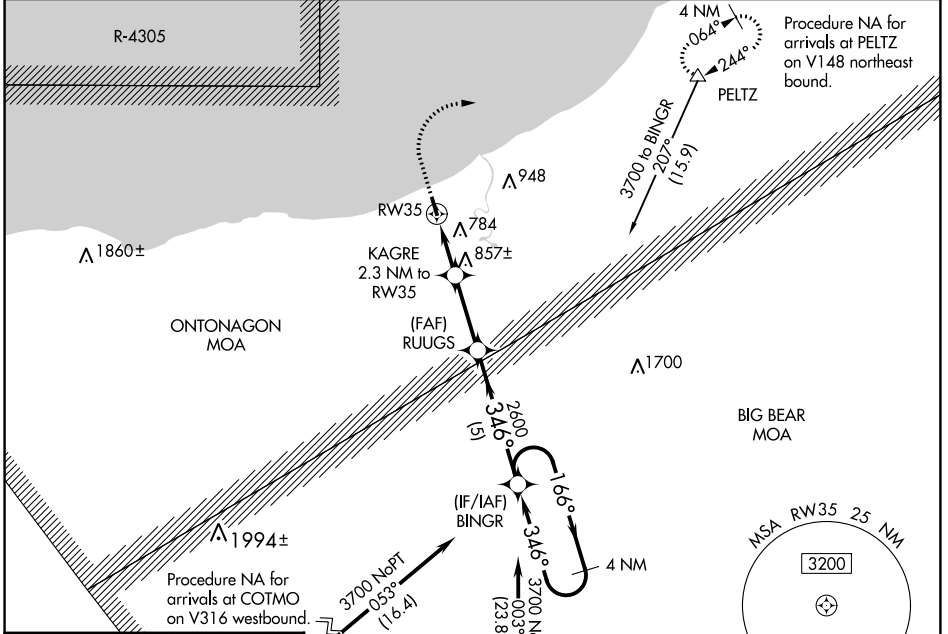
RNAV (GPS) RWY 35

ONTONAGON COUNTY/SCHUSTER FLD (OGM)

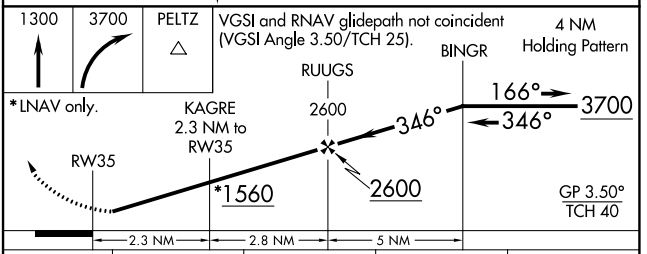
Baro-VNAV NA.
NA Rwy 35 helicopter visibility reduction below 3/4 SM NA.
 DME/DME RNP-0.3 NA. Use Hancock altimeter setting.

MISSED APPROACH: Climb to 1300 then climbing right turn to 3700 direct PELTZ and hold, continue climb-in-hold to 3700.

CMX ASOS 125.675	MINNEAPOLIS CENTER 133.55 379.1	CTAF 122.9
----------------------------	-------------------------------------------	----------------------



ELEV 665	TDZE 665
-----------------	-----------------



CATEGORY	A	B	C	D
LPV DA	1152-1½		487 (500-1½)	NA
LNAV/VNAV DA	1301-1⅞		636 (700-1⅞)	NA
LNAV MDA	1280-1	615 (700-1)	1280-1¾ 615 (700-1¾)	NA
C CIRCLING	1320-1	655 (700-1)	1420-2¼ 755 (800-2¼)	NA

EC-1, 28 NOV 2024 to 26 DEC 2024

EC-1, 28 NOV 2024 to 26 DEC 2024