

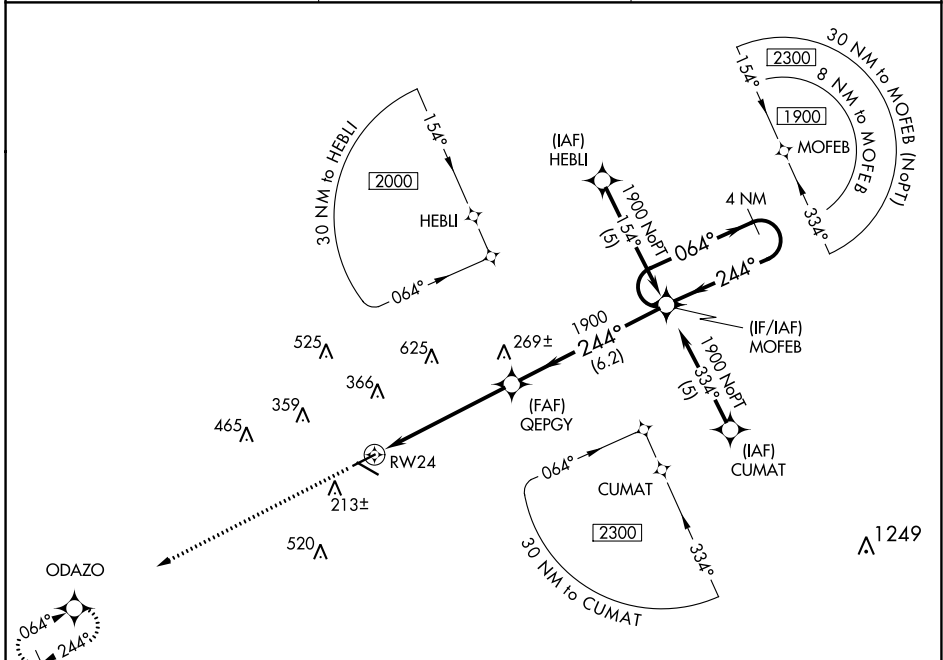
APP CRS	Rwy Idg	<b>5136</b>
<b>244°</b>	TDZE	<b>83</b>
	Apt Elev	<b>99</b>

# RNAV (GPS) RWY 24

BREWTON MUNI (12J)

RNP APCH - GPS.		MISSED APPROACH: Climb to 2000 direct ODAZO and hold.
<p><b>▽</b> When local altimeter setting not received use Pensacola altimeter setting and increase all MDA 100 feet; increase LNAV Cats C and D visibility ¼ SM. Procedure NA at night.</p> <p><b>△</b> NA</p>		

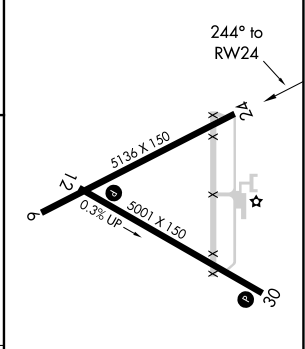
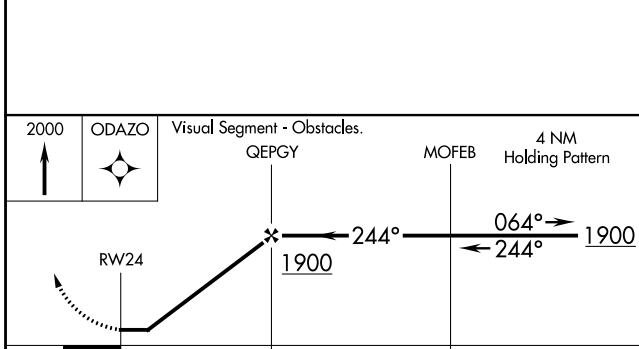
AWOS-3PT <b>119.325</b>	PENSACOLA APP CON <b>127.35 291.625</b>	UNICOM <b>122.725 (CTAF) 0</b>
----------------------------	--	-----------------------------------



SE-4, 28 NOV 2024 to 26 DEC 2024

SE-4, 28 NOV 2024 to 26 DEC 2024

ELEV	99	TDZE	83
------	----	------	----



CATEGORY	A	B	C	D
LNAV MDA	520-1	437 (500-1)	520-1¼	437 (500-1¼)

MIRL Rwy 12-30 0
------------------