

WAAS CH 56316 W30A	APP CRS 301°	Rwy Idg 5001 TDZE 99 Apt Elev 99
--	------------------------	---

RNAV (GPS) RWY 30

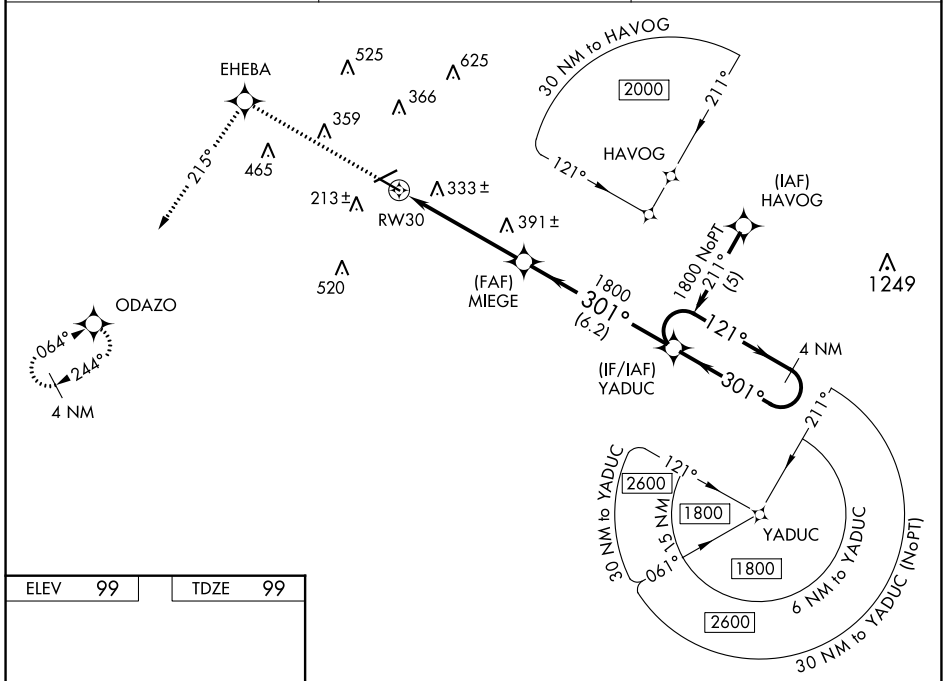
BREWTON MUNI (12J)

RNP APCH.

NA Baro-VNAV NA when using Pensacola altimeter setting. For uncompensated Baro-VNAV systems, LNAV/VNAV NA below -15°C or above 48°C. Rwy 30 helicopter visibility reduction below ¾ SM NA. When local altimeter setting not received, use Pensacola altimeter setting; increase LPV DA to 611 feet; increase LNAV/VNAV DA to 787 feet; increase all MDAs 100 feet; increase LPV all Cats, LNAV/VNAV all Cats and LNAV Cats C and D visibility ¼ SM. VDP NA when using Pensacola altimeter setting.

MISSED APPROACH: Climb to 2000 direct EHEBA and on track 215° to ODAZO and hold.

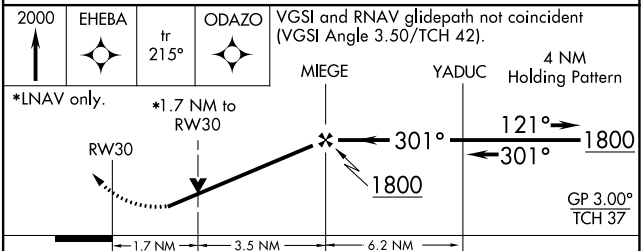
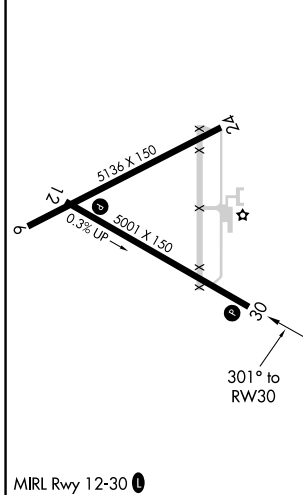
AWOS-3PT 119.325	PENSACOLA APP CON 127.35 291.625	UNICOM 122.725 (CTAF) 0
----------------------------	--	-----------------------------------



SE-4, 28 NOV 2024 to 26 DEC 2024

SE-4, 28 NOV 2024 to 26 DEC 2024

ELEV 99	TDZE 99
----------------	----------------



2000	EHEBA	tr 215°	ODAZO	VGSI and RNAV glidepath not coincident (VGSI Angle 3.50/TCH 42).			
*LNAV only.				MIEGE	YADUC	4 NM Holding Pattern	
RW30				*1.7 NM to RW30		GP 3.00° TCH 37	
				1.7 NM	3.5 NM	6.2 NM	
CATEGORY	A	B	C	D			
LPV DA	527-1½			428 (500-1½)			
LNAV/VNAV DA	703-2¼			604 (700-2¼)			
LNAV MDA	660-1		561 (600-1)		660-1¾		660-1¾
					561 (600-1¾)		561 (600-1¾)