

WAAS CH 86823 W36A	APP CRS 358°	Rwy Idg TDZE 140 Apt Elev 140	5005
--	------------------------	---	-------------

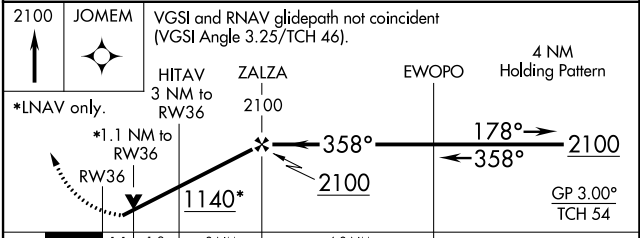
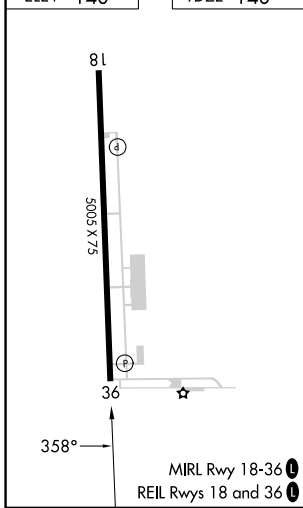
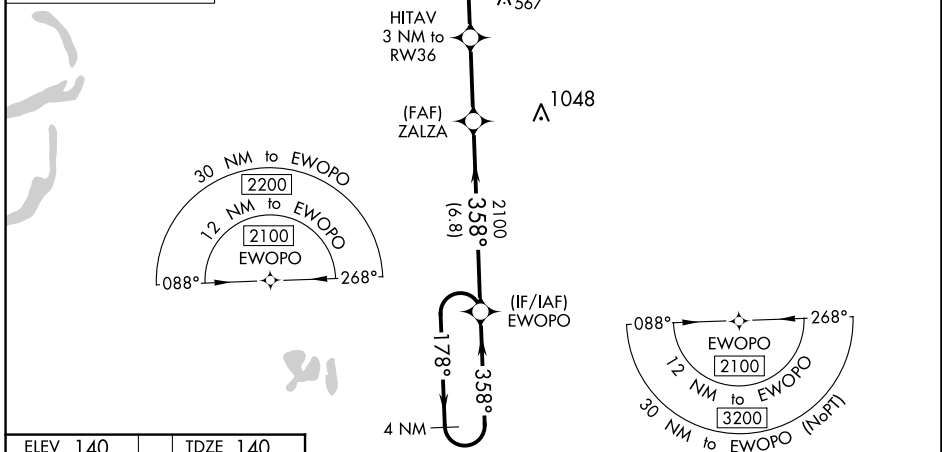
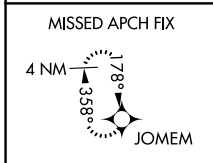
RNAV (GPS) RWY 36

CLEVELAND MUNI (RNV)

⚠ For uncompensated Baro-VNAV systems, LNAV/VNAV NA below -1.5°C (5°F) or above 54°C (130°F). DME/DME RNP-0.3 NA. Baro-VNAV and VDP NA when using Greenville altimeter setting. When local altimeter setting not received, use Greenville altimeter setting and increase LPV DA to 438, LNAV/VNAV DA to 597, and all MDA 60 feet; increase LPV all Cats and LNAV Cats C/D visibility ¼ mile, and LNAV/VNAV all Cats visibility ½ mile. Rwy 36 helicopter visibility reduction below ¾ SM NA.

⚠ MISSED APPROACH: Climb to 2100 direct JOMEM and hold.

AWOS-3PT 124.175	MEMPHIS CENTER 135.875 269.35	UNICOM 122.725 (CTAF) 0
----------------------------	---	-----------------------------------



CATEGORY	A	B	C	D
LPV DA		390-¾	250 (300-¾)	
LNAV/VNAV DA		549-1¾	409 (500-1¾)	
LNAV MDA		520-1	380 (400-1)	
C CIRCLING	600-1	460 (500-1)	900-2¼ 760 (800-2¼)	900-2½ 760 (800-2½)

SC-4, 28 NOV 2024 to 26 DEC 2024

SC-4, 28 NOV 2024 to 26 DEC 2024