

WAAS CH 86622 W13A	APP CRS 136°	Rwy Idg TDZE Apt Elev	4400 642 660
--	------------------------	-----------------------------	---

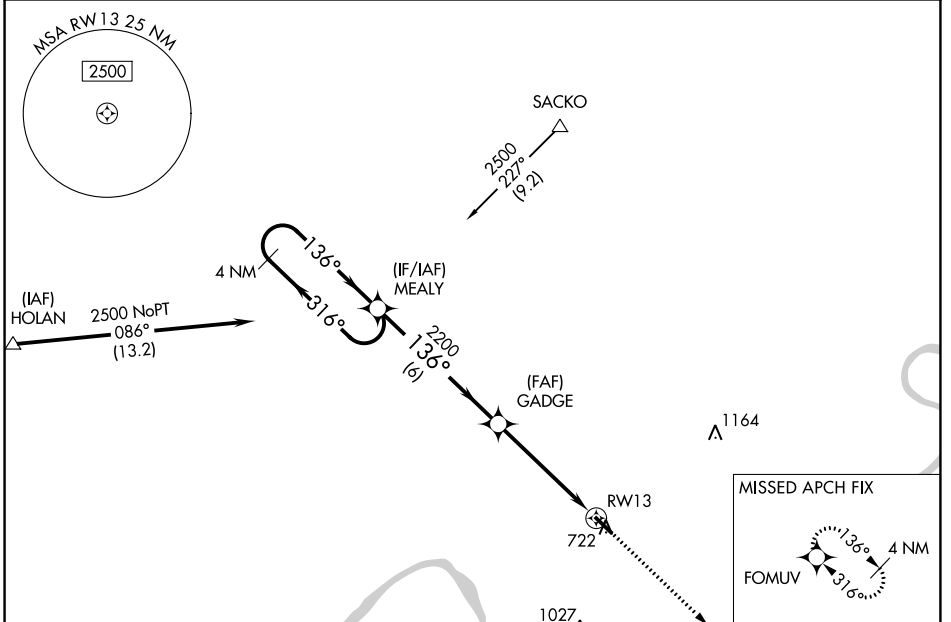
RNAV (GPS) RWY 13

PERRY COUNTY MUNI (TEL)

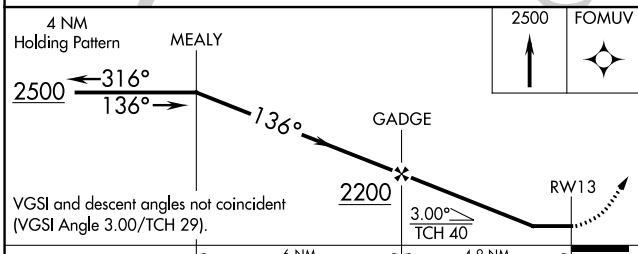
⚠ NA When VGSI inop, Circling Rwy 31 NA at night. When VGSI inop, Straight-in/Circling Rwy 13 procedure NA at night. DME/DME RNP-0.3 NA. Visibility reduction by helicopters NA. Obtain local altimeter setting on CTAF; when not received, use Huntingburg altimeter setting and increase all MDA 80 feet and increase LP Cat C visibility 1/4 mile and LNAV Cat C visibility 1/8 mile.

MISSED APPROACH: Climb to 2500 direct FOMUV and hold.

EVANSVILLE APP CON *	UNICOM
124.025 290.9	122.7 (CTAF) 0

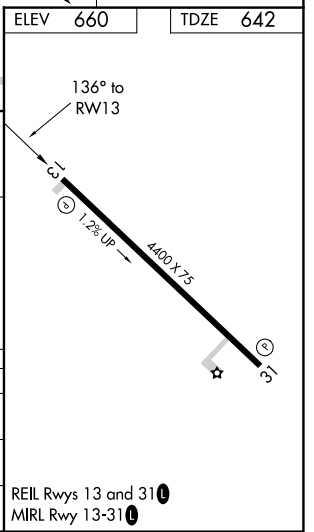


ELEV 660	TDZE 642
----------	----------



VGSI and descent angles not coincident (VGSI Angle 3.00/TCH 29).

CATEGORY	A	B	C	D
LP MDA	1000-1	358 (400-1)	1000-1 1/8 358 (400-1 1/8)	NA
LNAV MDA	1040-1	398 (400-1)	1040-1 1/4 398 (400-1 1/4)	NA
CIRCLING	1080-1 420 (500-1)	1120-1 460 (500-1)	1120-1 1/2 460 (500-1 1/2)	NA



EC-2, 28 NOV 2024 to 26 DEC 2024

EC-2, 28 NOV 2024 to 26 DEC 2024