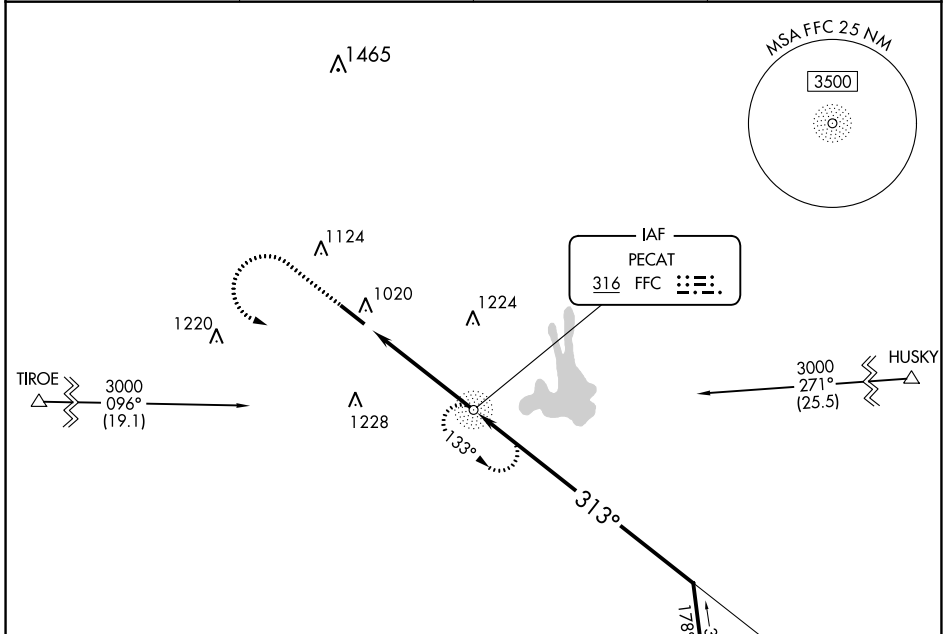


NDB FFC <b>316</b>	APP CRS <b>313°</b>	Rwy Idg TDZE Apt Elev	<b>5118</b> <b>807</b> <b>808</b>
-----------------------	------------------------	-----------------------------	---

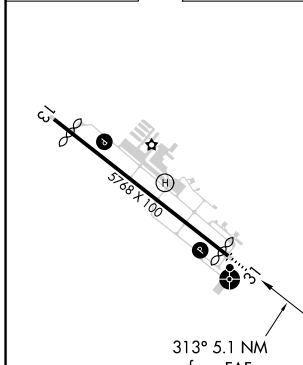
**NDB RWY 31**  
ATLANTA RGNL FALCON FLD (F'F'C)

	Circling Rwy 13 NA at night. Rwy 31 helicopter visibility reduction below 3/4 SM NA. For Inop ALS, increase Cat C/D visibility to 1 1/2 SM.	ODALS 	MISSED APPROACH: Climb to 1700 then climbing left turn to 2500 direct FFC NDB and hold.

ASOS <b>118.525</b>	ATLANTA APP CON <b>119.8 354.125</b>	CLNC DEL <b>119.8</b>	UNICOM <b>123.05 (CTAF)</b>
------------------------	---	--------------------------	--------------------------------



ELEV 808	<b>D</b>	TDZE 807
----------	----------	----------



1700	2500	FFC	FFC NDB	Remain within 10 NM
313° 5.1 NM from FAF		2500 313° 2500		
3.07° TCH 45		5.1 NM		

FAF to MAP 5.1 NM	A		B		C		D	
Knots	60	90	120	150	180			
Min:Sec	5:06	3:24	2:33	2:02	1:42			
<b>CIRCLING</b>	1360-1 552 (600-1)		1360-1 3/8 553 (600-3/4)		1360-1 3/8 553 (600-1 3/8)		1540-2 1/4 732 (800-2 1/4)	

SE-4, 28 NOV 2024 to 26 DEC 2024

SE-4, 28 NOV 2024 to 26 DEC 2024