

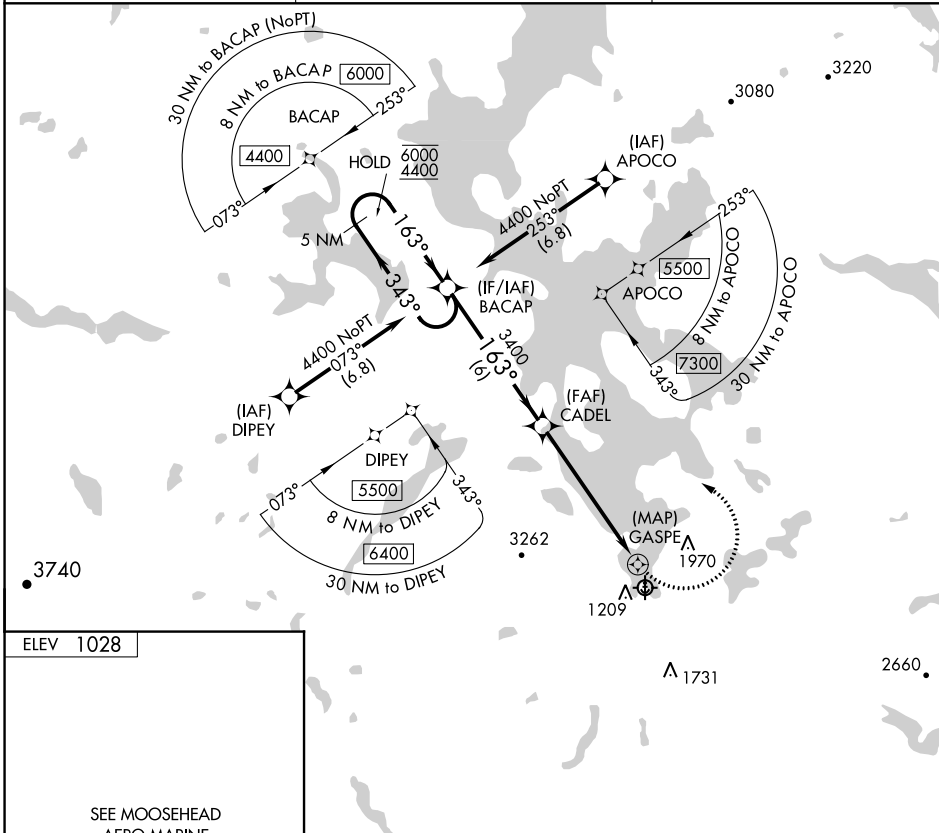
| | | |
|---------|----------|------|
| APP CRS | Rwy Idg | N/A |
| 163° | TDZE | N/A |
| | Apt Elev | 1028 |

RNAV (GPS)-B

MOOSEHEAD AERO MARINE (52B)

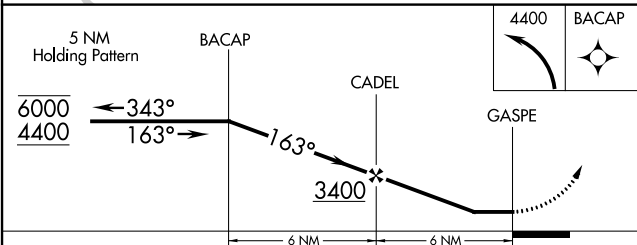
| | | |
|---|--|--|
| RNP APCH - GPS. | | MISSED APPROACH: Climbing left turn to 4400 direct BACAP and hold. |
| <p>▼ Procedure NA at night. Use 3B1 altimeter setting; when not received, use BGR altimeter setting and increase all MDA 240 feet.</p> <p>⚠ NA</p> <p>❄ -22°C</p> | | |

| | | |
|------------------------------|--------------------------------------|----------------------|
| 3B1 AWOS-A 124.175 | BOSTON CENTER 120.25 346.4 | CTAF 122.9 |
|------------------------------|--------------------------------------|----------------------|



ELEV 1028

SEE MOOSEHEAD AERO MARINE SEAPLANE BASE LANDING CHART



| CATEGORY | A | B | C | D |
|----------|---------------------------|---------------------------|-------------------------|----|
| CIRCLING | 2140-1¼ 1112 (1200-1¼) | 2560-1½ 1532 (1600-1½) | 2560-3 1532 (1600-3) | NA |

NE-1, 28 NOV 2024 to 26 DEC 2024

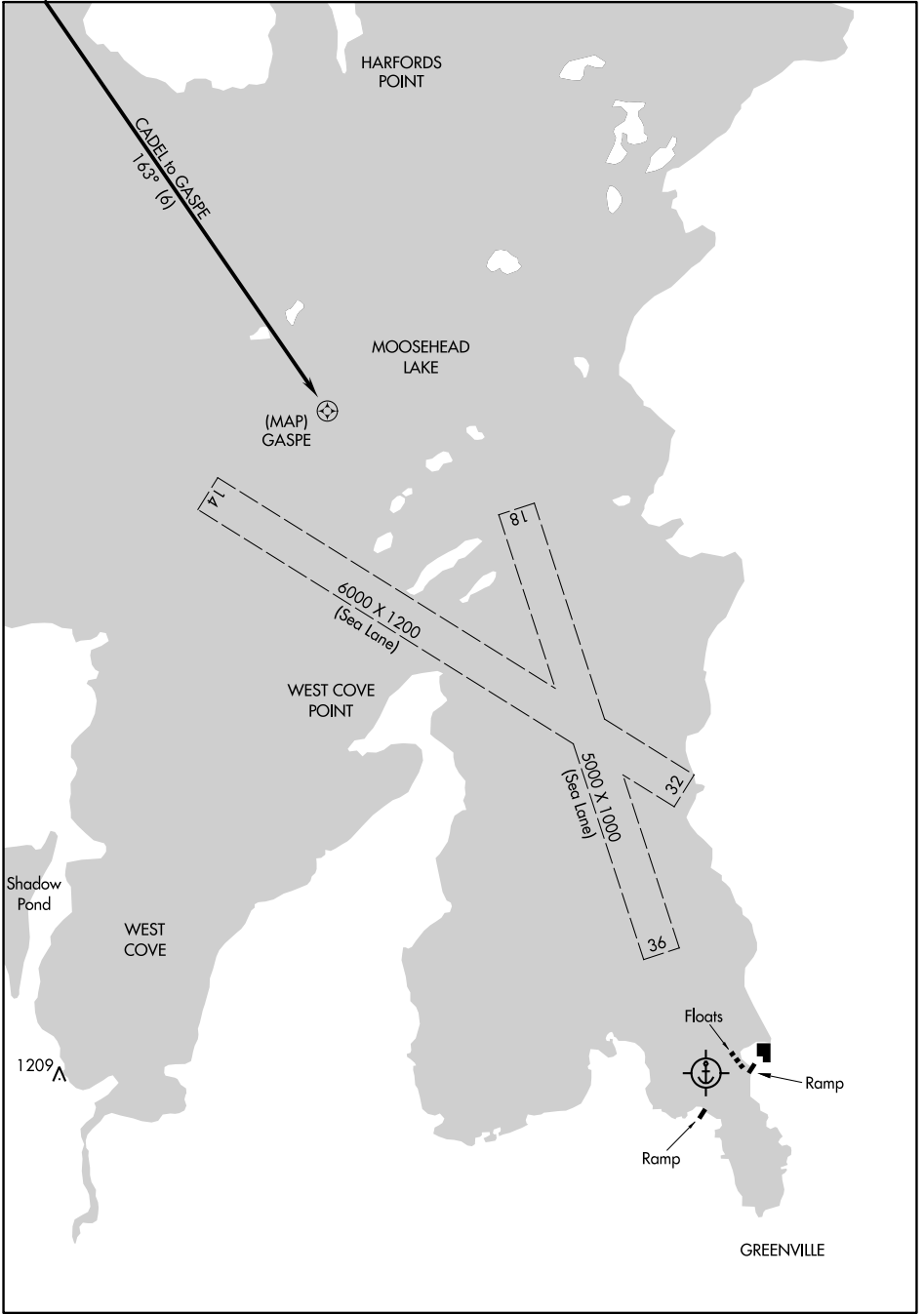
NE-1, 28 NOV 2024 to 26 DEC 2024

24249

RNAV (GPS) -B LANDING

AL-5935 (FAA)

MOOSEHEAD AERO MARINE (52B)
GREENVILLE, MAINE



NE-1, 28 NOV 2024 to 26 DEC 2024

NE-1, 28 NOV 2024 to 26 DEC 2024

RNAV (GPS) -B LANDING

45°28'N-69°36'W

GREENVILLE, MAINE
MOOSEHEAD AERO MARINE (52B)

Amdt 1A 05SEP24