

DALLAS THREE DEPARTURE  
(DAL3, TTT) 25JAN24

LANCASTER, TEXAS  
LANCASTER RGNL (LNC)

LONE STAR DEP CON  
125.2 343.65  
CTAF  
122.7

RADAR and DME required.

NOTE: BELCHER Transition: For aircraft inbound to the JAN, MLU, and SHV terminal areas only.  
NOTE: SOLDO Transition: ATC assigned.

**TOP ALTITUDE:  
ASSIGNED BY ATC**

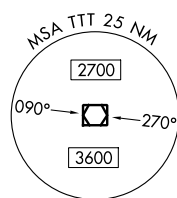
BONHAM  
114.6 BYP  
Chan 93

MAVERICK  
113.1 TTT  
Chan 78

GREGG COUNTY  
112.9 GGG  
Chan 76

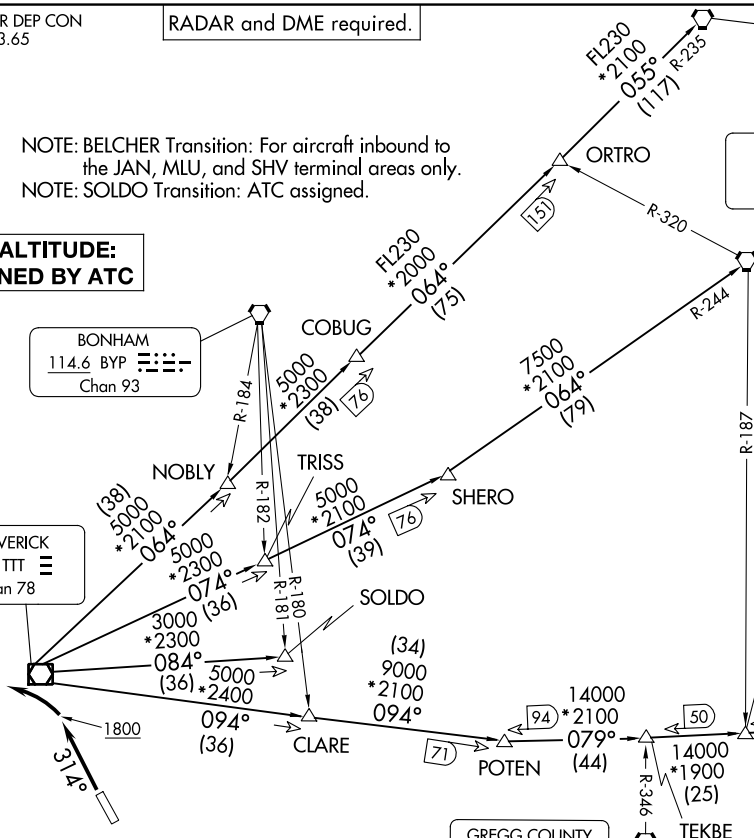
TEXARKANA  
116.3 TXK  
Chan 110

LITTLE ROCK  
113.9 LIT  
Chan 86



**TAKEOFF MINIMUMS**

Rwy 13: Standard.  
Rwy 31: 300-1¼ or standard with a minimum climb of 210'/NM to 800, or alternatively, with standard takeoff minimums and a normal 200'/NM climb gradient, takeoff must occur no later than 1300' prior to DER.



(CONTINUED ON FOLLOWING PAGE)

NOTE: Chart not to scale.

(DAL3, TTT) 24305  
DALLAS THREE DEPARTURE

AL-5936 (FAA)

LANCASTER RGNL (LNC)  
LANCASTER, TEXAS

# DALLAS THREE DEPARTURE



## DEPARTURE ROUTE DESCRIPTION

TAKEOFF RUNWAY 31: Climb on heading 314° to 1800 before turning left.

When entering controlled airspace, fly assigned heading for RADAR vectors to appropriate route. Maintain ATC assigned altitude.

BELCHER TRANSITION (DALL3.EIC): From over TTT VOR/DME on TTT R-094 to POTEN, then on EIC R-259 to EIC VORTAC.

LITTLE ROCK TRANSITION (DALL3.LIT): From over TTT VOR/DME on TTT R-064 to ORTRO, then on LIT R-235 to LIT VORTAC.

SOLDO TRANSITION (DALL3.SOLDO): From over TTT VOR/DME on TTT R-084 to SOLDO.

TEXARKANA TRANSITION (DALL3.TXK): From over TTT VOR/DME on TTT R-074 to SHERO, then on TXK R-244 to TXK VORTAC.

SC-2, 28 NOV 2024 to 26 DEC 2024

SC-2, 28 NOV 2024 to 26 DEC 2024