

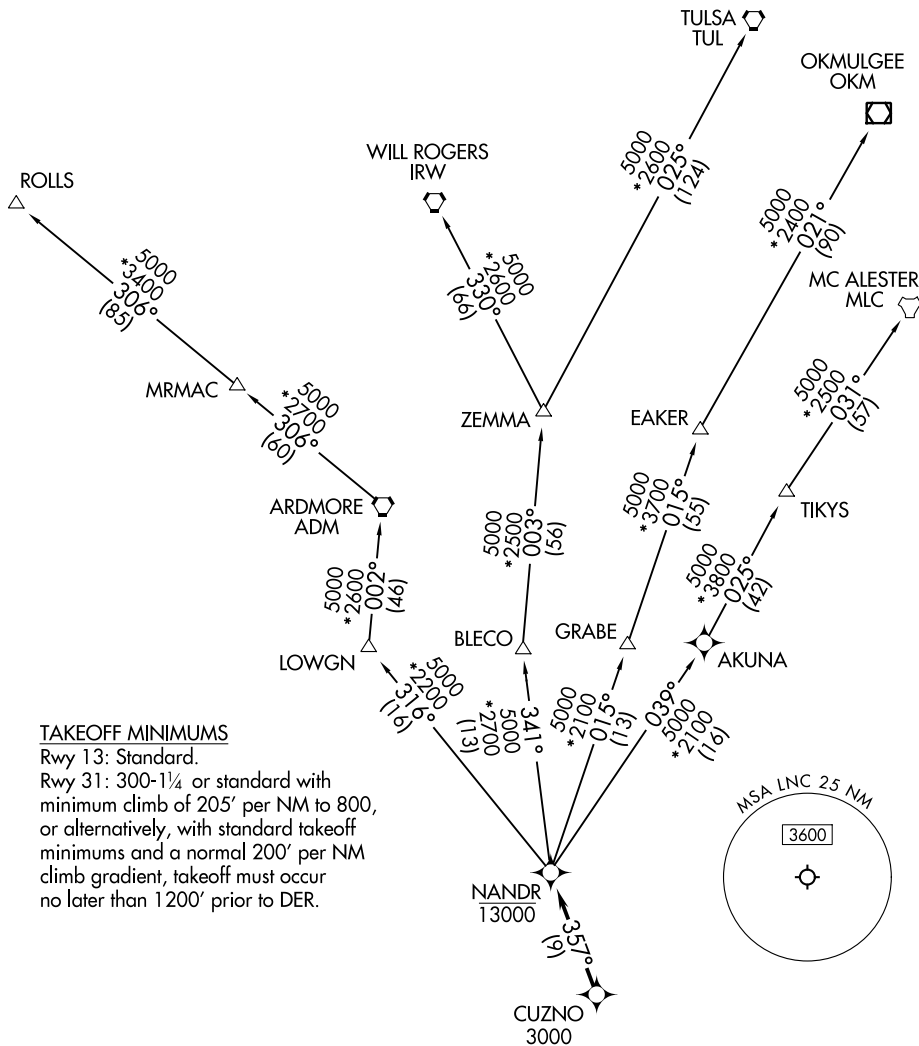
NANDR TWO DEPARTURE (RNAV)

LONE STAR DEP CON
125.2 343.65

RNAV 1 - DME/DME/IRU or GPS.

RADAR required.

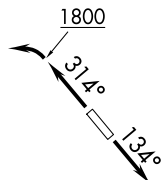
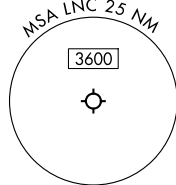
**TOP ALTITUDE:
ASSIGNED BY ATC**



TAKEOFF MINIMUMS

Rwy 13: Standard.

Rwy 31: 300-1¼ or standard with minimum climb of 205' per NM to 800, or alternatively, with standard takeoff minimums and a normal 200' per NM climb gradient, takeoff must occur no later than 1200' prior to DER.



NOTE: EAKER Transition: For TUL terminal arrivals only.
 NOTE: TULSA Transition: For all aircraft overflying TUL VORTAC.
 NOTE: Aircraft arriving to the Oklahoma City terminal area, file and expect the ZEMMA enroute transition.

NOTE: Chart not to scale.

(CONTINUED ON FOLLOWING PAGE)

NANDR TWO DEPARTURE (RNAV)

SC-2, 28 NOV 2024 to 26 DEC 2024

SC-2, 28 NOV 2024 to 26 DEC 2024

NANDR TWO DEPARTURE (RNAV)



DEPARTURE ROUTE DESCRIPTION

TAKEOFF RUNWAY 13: Climb on heading 134° or as assigned by ATC, thence
TAKEOFF RUNWAY 31: Climb on heading 314° to 1800 before turning left or as assigned by ATC, thence

. . . . expect RADAR vectors to cross CUZNO at or above 3000, then on track 357° to cross NANDR at or below 13000, then on assigned transition.

- EAKER TRANSITION (NANDR2.EAKER)
- MC ALESTER TRANSITION (NANDR2.MLC)
- OKMULGEE TRANSITION (NANDR2.OKM)
- ROLLS TRANSITION (NANDR2.ROLLS)
- TULSA TRANSITION (NANDR2.TUL)
- WILL ROGERS TRANSITION (NANDR2.IRW)
- ZEMMA TRANSITION (NANDR2.ZEMMA)

SC-2, 28 NOV 2024 to 26 DEC 2024

SC-2, 28 NOV 2024 to 26 DEC 2024