

| | | |
|--|------------------------|---|
| WAAS CH 42505 W31A | APP CRS 314° | Rwy Idg 6500 TDZE 487 Apt Elev 501 |
|--|------------------------|---|

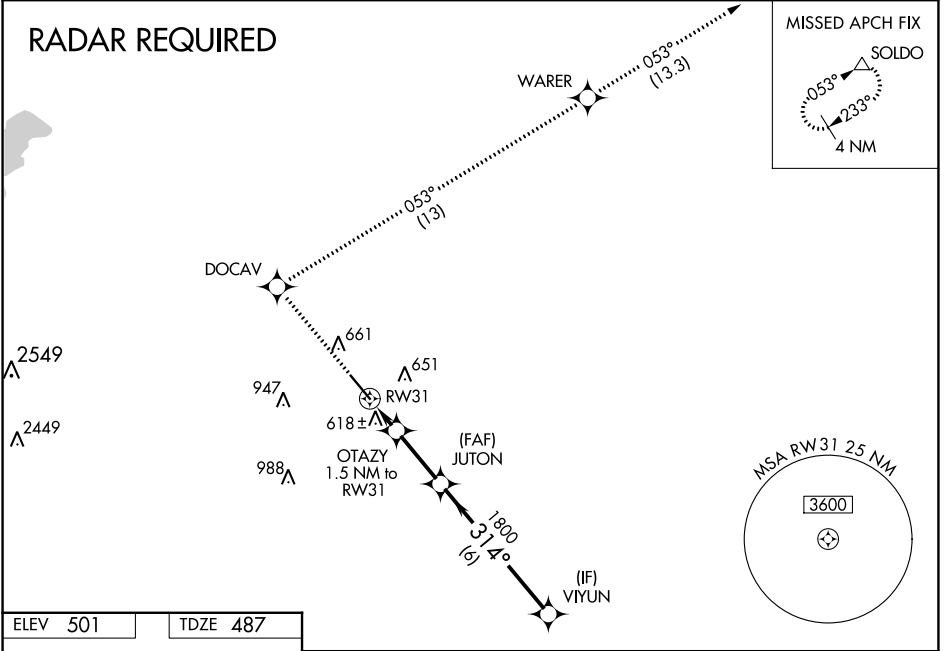
RNAV (GPS) RWY 31

LANCASTER RGNL (LNC)

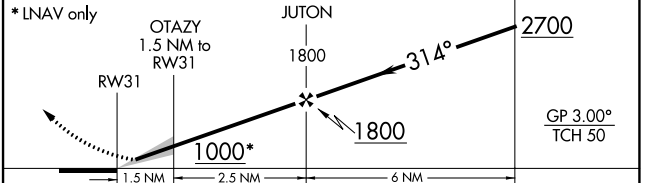
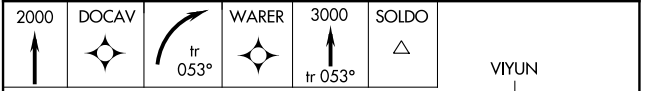
⚠ For uncompensated Baro-VNAV systems, LNAV/VNAV NA below -16°C (4°F) or above 47°C (116°F). DME/DME RNP-0.3 NA. Baro-VNAV NA when using Dallas Exec altimeter setting. When local altimeter setting not received, use Dallas Exec altimeter setting and increase LPV DA to 732 feet; increase LNAV/VNAV DA to 970 feet and visibility all Cats ¼ SM; increase all MDAs 60 feet and LNAV Cats C/D and Circling Cats C/D visibility ¼ SM.

MISSED APPROACH: Climb to 2000 direct DOCAV and right turn on track 053° to WARER then climb to 3000 on track 053° to SOLDO and hold.

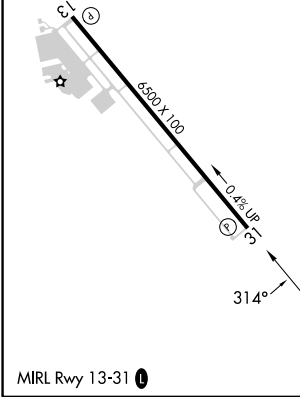
| | | | |
|----------------------------|--|-----------------------|---------------------------------|
| AWOS-3PT 118.975 | LONE STAR APP CON 125.2 343.65 | GCO 121.725 | UNICOM 122.7 (CTAF) 0 |
|----------------------------|--|-----------------------|---------------------------------|



| | |
|-----------------|-----------------|
| ELEV 501 | TDZE 487 |
|-----------------|-----------------|



| CATEGORY | A | B | C | D |
|--------------|---------------------|--------------------|----------------------|----------------------|
| LPV DA | 687-¾ 200 (200-¾) | | | |
| LNAV/VNAV DA | 925-1½ 438 (500-1½) | | | |
| LNAV MDA | 880-1 393 (400-1) | | | 880-1¼ 393 (400-1¼) |
| CIRCLING | 980-1 479 (500-1) | 1020-1 519 (600-1) | 1300-2¼ 799 (800-2¼) | 1300-2½ 799 (800-2½) |



SC-2, 28 NOV 2024 to 26 DEC 2024

SC-2, 28 NOV 2024 to 26 DEC 2024