

WAAS CH 87036 W34A	APP CRS 335°	Rwy Idg 4997 TDZE 83 Apt Elev 83
---------------------------------	------------------------	---

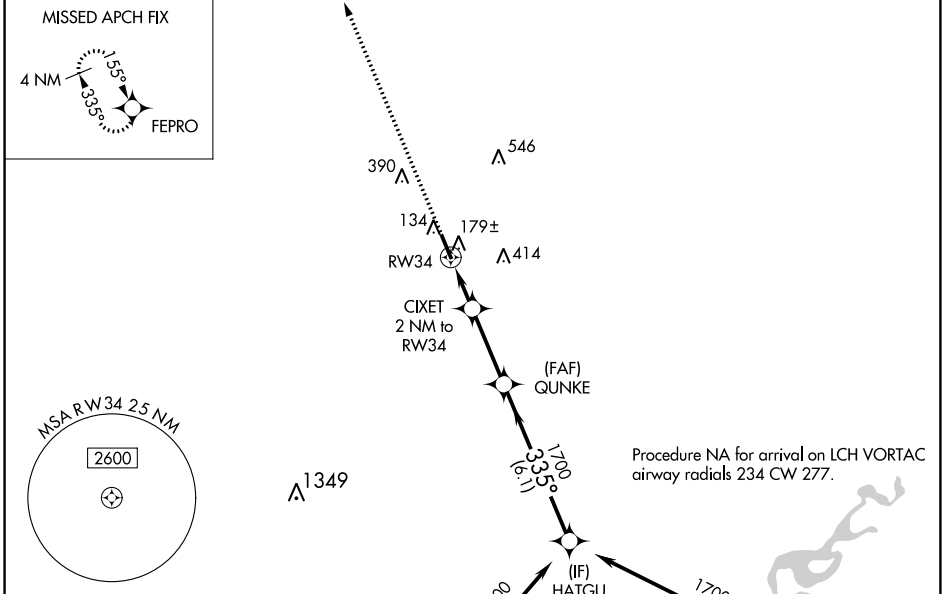
RNAV (GPS) RWY 34

DE QUINCY INDUSTRIAL AIRPARK (5R.8)

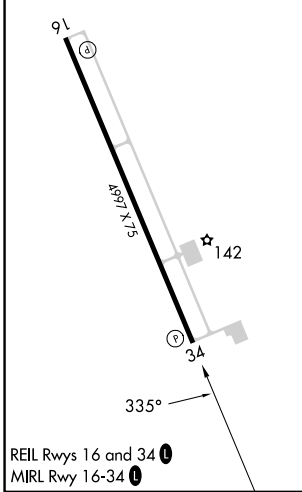
⚠ For uncompensated Baro-VNAV systems, LNAV/VNAV NA below -1.5°C (5°F) or above 54°C (130°F). DME/DME RNP-0.3 NA. Helicopter visibility reduction below 3/4 SM NA. When local altimeter setting not received, use Sulphur altimeter setting and increase all DA 55 feet and MDA 60 feet, increase LPV and LNAV/VNAV visibility all Cats 1/4, LNAV and Circling Cat C visibility 3/8 mile. Baro-VNAV and VDP NA with Sulphur altimeter setting. Night landing Rwy 16 NA.

⚠ NA MISSED APPROACH: Climb to 1700 direct FEPRO and hold.

AWOS-3PT 121.2	LAKE CHARLES APP CON ★ 119.35 282.3	UNICOM 122.8 (CTAF) ①
--------------------------	---	---------------------------------



ELEV 83	TDZE 83
---------	---------



1700	FEPRO	CIXET 2 NM to RW34	QUNKE 1700	HATGU
*LNAV only		*1.3 NM to RW34	← 335° → 1700	← 1700 →
RW34		*760	GP 3.00° TCH 50	
1.3		0.7	2.9 NM	
A		B	C	
LPV DA	339-3/4		256 (300-3/4)	
LNAV/VNAV DA	333-3/4		250 (300-3/4)	
LNAV MDA	540-1	457 (500-1)		540-1 3/8 457 (500-1 3/8)
C CIRCLING	540-1 457 (500-1)	740-1 657 (700-1)	740-1 3/4 657 (700-1 3/4)	

SC-4, 28 NOV 2024 to 26 DEC 2024

SC-4, 28 NOV 2024 to 26 DEC 2024