

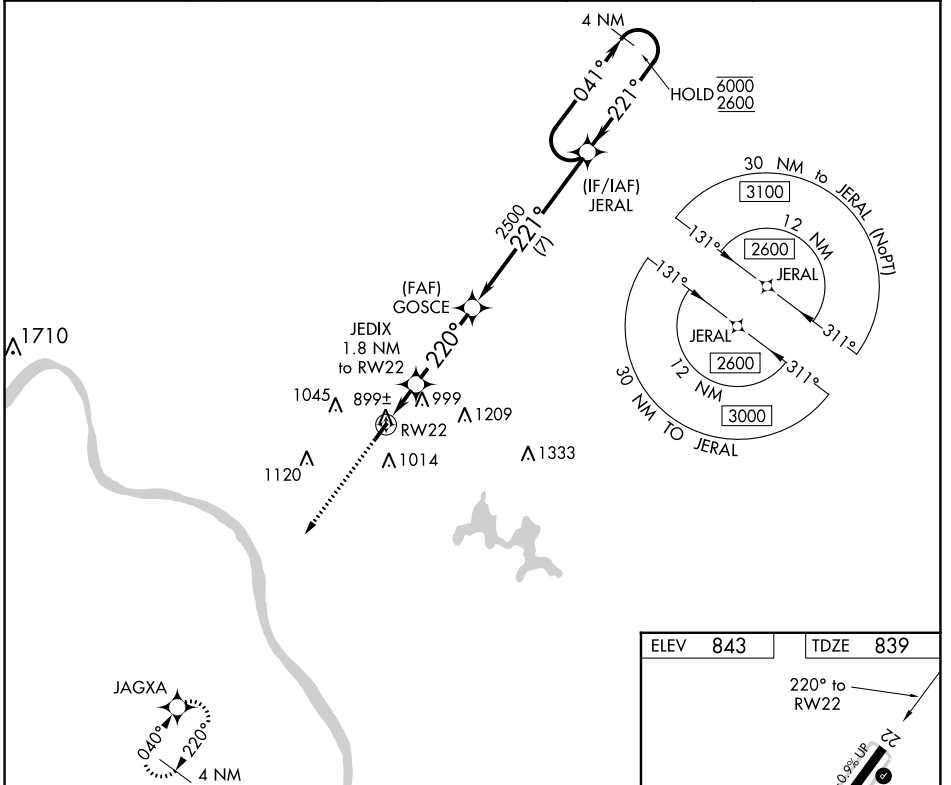
WAAS CH 82227 W22A	APP CRS 220°	Rwy Idg TDZE Apt Elev	3566 839 843
--	------------------------	-----------------------------	---

RNAV (GPS) RWY 22

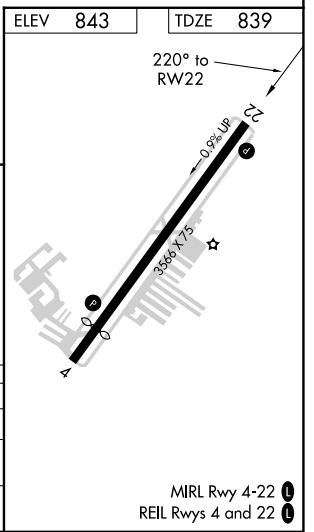
CLERMONT COUNTY (I69)

RNP APCH.		MISSED APPROACH: Climb to 2500 direct JAGXA and hold.	
<p>▼ Circling Rwy 4 NA at night. ▲ Rwy 22 helicopter visibility reduction below 1 SM NA.</p>			

AWOS-3 127.275	CINCINNATI APP CON 121.0 254.25	CLNC DEL 124.9	UNICOM 122.975 (CTAF) ①
--------------------------	---	--------------------------	-----------------------------------



2500	JAGXA	Visual Segment- Obstacles.		JERAL	4 NM Holding Pattern
↑	✧			GOSCE	041° → 6000 ← 221° 2600
RW22		JEDIX 1.8 NM to RW22	220°	2500	221°
1.8		3.4 NM		7 NM	
CATEGORY	A	B	C	D	
LP MDA	1160-1 321 (400-1)		NA		
LNAV MDA	1240-1	401 (400-1)	1240-1 1/8 401 (400-1 1/8)	NA	
① CIRCLING	1320-1 477 (500-1)	1360-1 517 (600-1)	1520-2 677 (700-2)	NA	



EC-2, 28 NOV 2024 to 26 DEC 2024

EC-2, 28 NOV 2024 to 26 DEC 2024

MIRL Rwy 4-22 ①
REIL Rws 4 and 22 ①