

# RNAV (GPS) RWY 14

GRAYLING AAF (GOV)

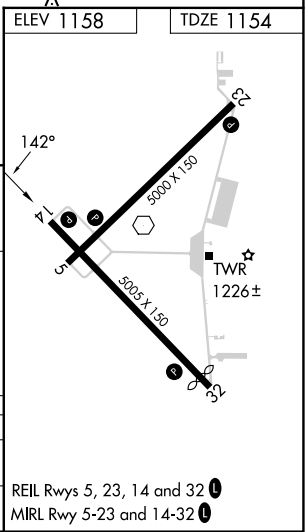
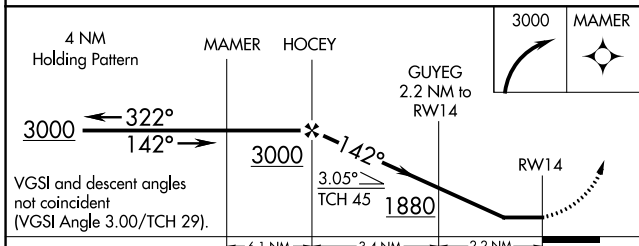
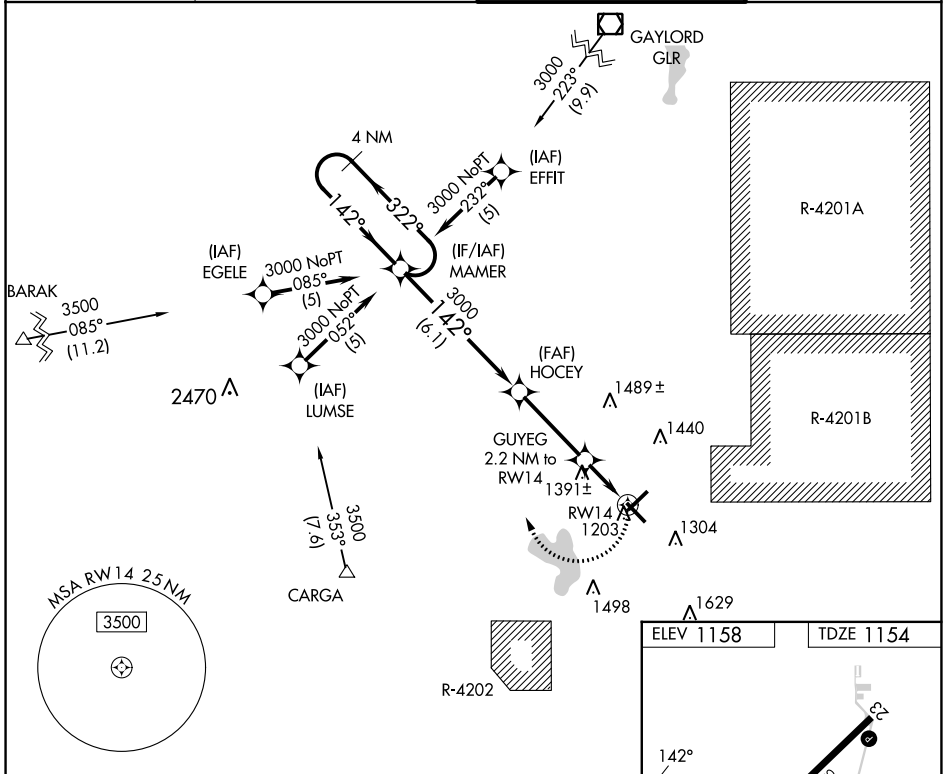
APP CRS	Rwy Idg	<b>5005</b>
<b>142°</b>	TDZE	<b>1154</b>
	Apt Elev	<b>1158</b>

RNP APCH.

- ⚠ Circling Rwy 5, 23, 32 NA at night. Rwy 14 helicopter visibility reduction below 3/4 SM NA.
- ⚠ When local altimeter setting not received, use Houghton Lake altimeter setting and increase all MDAs 60 feet and LNAV Cat C visibility 1/8 SM and Circling Cat D visibility 1/4 SM.

MISSED APPROACH:  
Climbing right turn to 3000  
direct MAMER and hold.

ATIS <b>119.075</b>	MINNEAPOLIS CENTER <b>125.475 269.45</b>	GRAYLING TOWER * <b>126.2 (CTAF) 0</b>	GND CON <b>121.9</b>
------------------------	---	---	-------------------------



CATEGORY	A	B	C	D
LNAV MDA	1700-1	546 (600-1)	1700-1 3/8 546 (600-1 3/8)	1700-1 3/4 546 (600-1 3/4)
CIRCLING	1720-1	562 (600-1)	1760-1 3/4 602 (700-1 3/4)	1960-2 1/2 802 (900-2 1/2)

REIL Rws 5, 23, 14 and 32 0  
MIRL Rwy 5-23 and 14-32 0

EC-1, 28 NOV 2024 to 26 DEC 2024

EC-1, 28 NOV 2024 to 26 DEC 2024