

VENICE, FLORIDA

AL-5960 (FAA)

23278

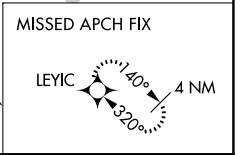
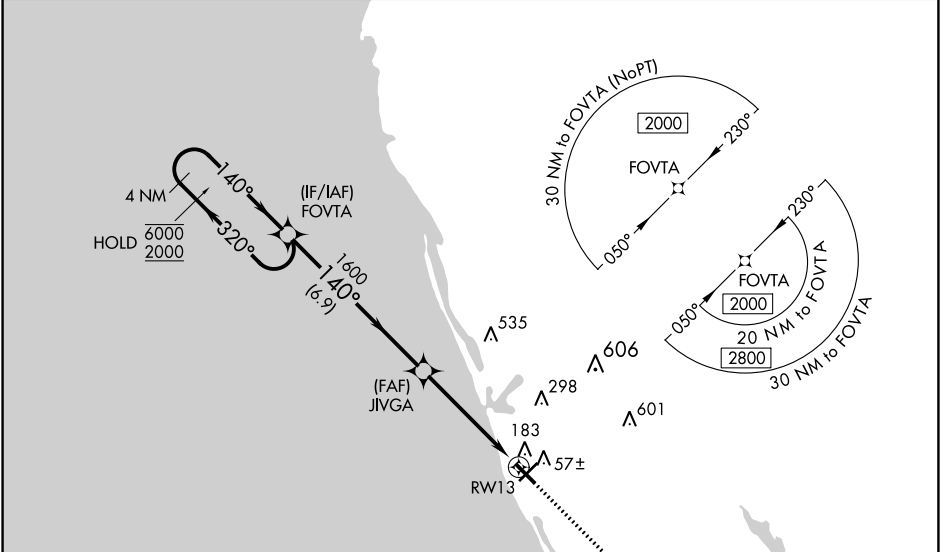
WAAS CH 86423	APP CRS 140°	Rwy Idg TDZE Apt Elev	5000 17 18
W13A			

RNAV (GPS) RWY 13

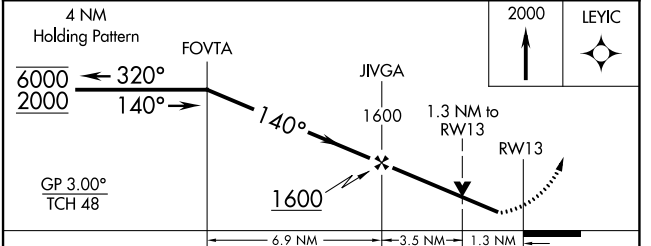
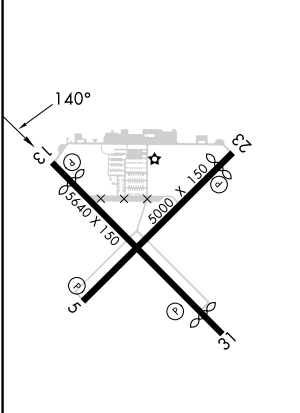
VENICE MUNI (VNC)

RNP APCH - GPS.		MISSED APPROACH: Climb to 2000 direct LEYIC and hold.	
<p>⚠ Rwy 13 helicopter visibility reduction below 3/4 SM NA. ⚠ For uncompensated Baro-VNAV systems, LNAV/VNAV NA below -15°C or above 54°C.</p>			

AWOS-3 119.275	TAMPA APP CON 119.65 353.575	CLNC DEL 118.075	UNICOM 122.725 (CTAF) 0
--------------------------	--	----------------------------	-----------------------------------



ELEV 18	D	TDZE 17
---------	----------	---------



CATEGORY	A	B	C	D
LPV DA		267-1	250 (300-1)	
LNAV/VNAV DA		364-1	347 (400-1)	
LNAV MDA	460-1	443 (500-1)	460-1 3/8	443 (500-1 1/2)
CIRCLING	500-1	482 (500-1)	680-1 3/4 662 (700-1 3/4)	920-3 902 (1000-3)

MIRL Rwy 5-23 and 13-31 **0**
 REIL Rwy 5, 13 and 23 **0**
 REIL Rwy 31

VENICE, FLORIDA
 Amdt 2A 05OCT23

27°04'N-82°26'W

VENICE MUNI (VNC) RNAV (GPS) RWY 13

SE-3, 28 NOV 2024 to 26 DEC 2024

SE-3, 28 NOV 2024 to 26 DEC 2024