

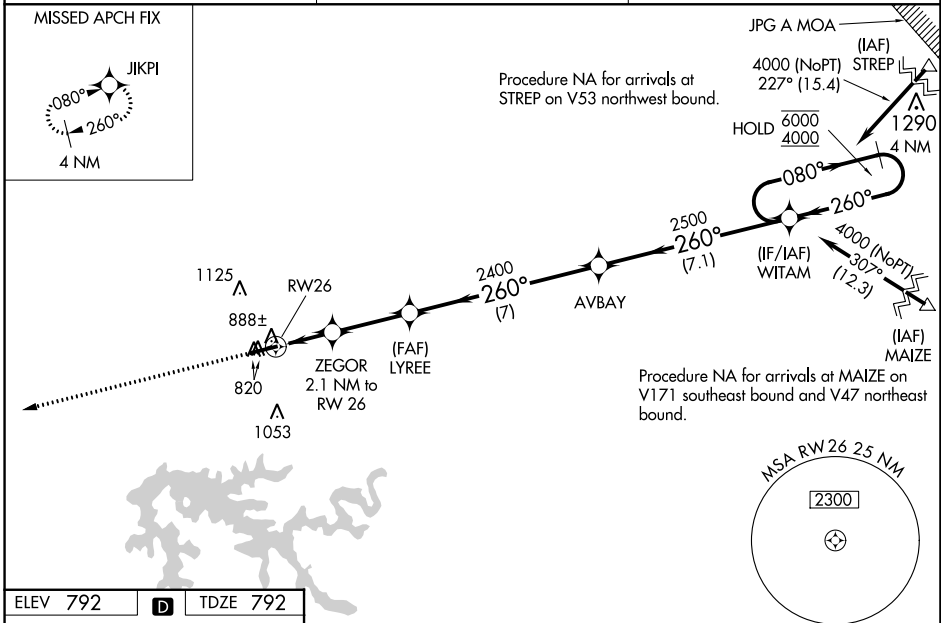
WAAS CH <b>78420</b> <b>W26A</b>	APP CRS <b>260°</b>	Rwy ldg <b>5298</b> TDZE <b>792</b> Apt Elev <b>792</b>
--	------------------------	---

# RNAV (GPS) RWY 26

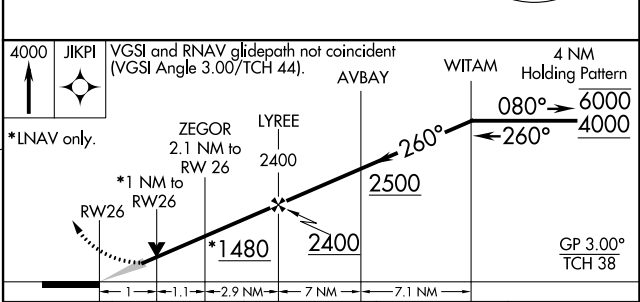
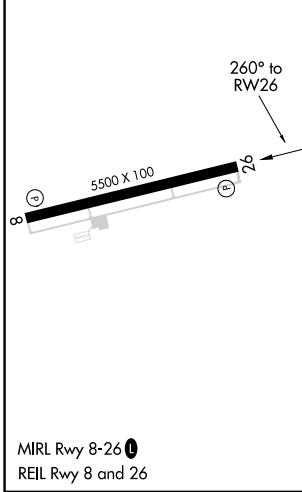
FRENCH LICK MUNI (F.R.H)

RNP APCH.	MISSED APPROACH: Climb to 4000 direct JIKPI and hold.
<p>▼</p> <p>▲</p> <p>For uncompensated Baro-VNAV systems, LNAV/VNAV NA below -16°C or above 39°C.</p>	

AWOS-3 <b>118.075</b>	LOUISVILLE APP CON <b>132.075 327.0</b>	UNICOM <b>122.8 (CTAF) 0</b>
--------------------------	--	---------------------------------



ELEV 792	<b>D</b>	TDZE 792
----------	----------	----------



CATEGORY	A	B	C	D
LPV DA		1042-1	250 (300-1)	
LNAV/VNAV DA		1077-1	285 (300-1)	
LNAV MDA		1140-1	348 (400-1)	
CIRCLING	1280-1	488 (500-1)	1480-2 688 (700-2)	1480-2¼ 688 (700-2¼)

EC-2, 28 NOV 2024 to 26 DEC 2024

EC-2, 28 NOV 2024 to 26 DEC 2024