

LOC/DME I-OPP 109.7 Chan 34	APP CRS 159°	Rwy Idg TDZE 207 Apt Elev 207	5402
---	------------------------	---	-------------

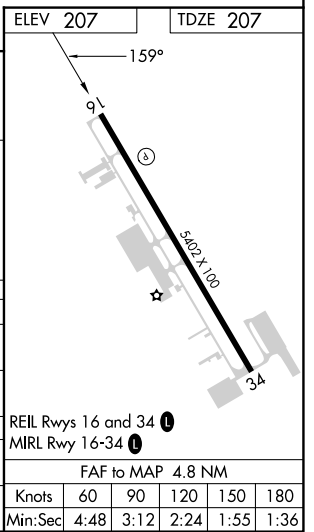
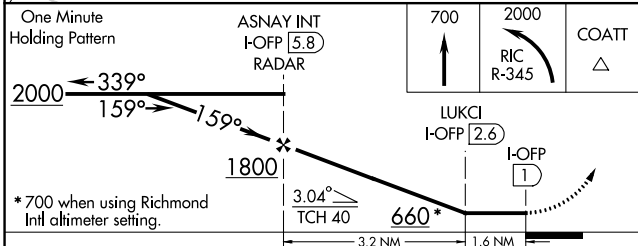
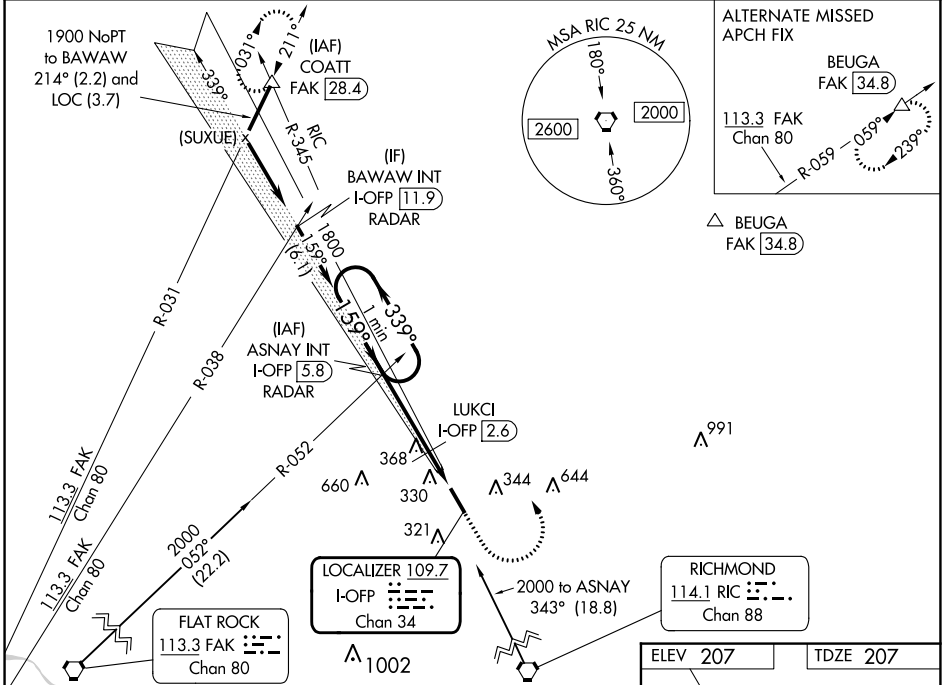
LOC RWY 16

HANOVER COUNTY MUNI (OFP)

▼ Helicopter visibility reduction below $\frac{3}{4}$ SM NA. When local altimeter setting not received, use Richmond Intl altimeter setting and increase all MDAs 40 feet; increase LUKCI fix minimums S-16 Cat C visibility $\frac{1}{8}$ SM.

▲ MISSED APPROACH: Climb to 700 then climbing left turn to 2000 via RIC VORTAC R-345 to COATT INT and hold.

ASOS 119.025	POTOMAC APP CON (001°-185°) 126.4 307.2 (186°-360°) 126.75 307.2	CLNC DEL 125.4	UNICOM 122.7 (CTAF) ☺
------------------------	--	--------------------------	--



CATEGORY	A	B	C	D
S-16	660-1	453 (500-1)	660-1 $\frac{3}{8}$ 453 (500-1 $\frac{3}{8}$)	660-1 $\frac{1}{2}$ 453 (500-1 $\frac{1}{2}$)
C CIRCLING	660-1	453 (500-1)	900-2 693 (700-2)	1020-2 $\frac{3}{4}$ 813 (900-2 $\frac{3}{4}$)
LUKCI FIX MINIMUMS				
S-16	560-1	353 (400-1)		560-1 $\frac{1}{4}$ 353 (400-1 $\frac{1}{4}$)
C CIRCLING	660-1	453 (500-1)	900-2 693 (700-2)	1020-2 $\frac{3}{4}$ 813 (900-2 $\frac{3}{4}$)

NE-3, 28 NOV 2024 to 26 DEC 2024

NE-3, 28 NOV 2024 to 26 DEC 2024