

APP CRS	Rwy Idg	4009
189°	TDZE	390
	Apt Elev	394

RNAV (GPS) Z RWY 19

RICHLAND (R.LD)

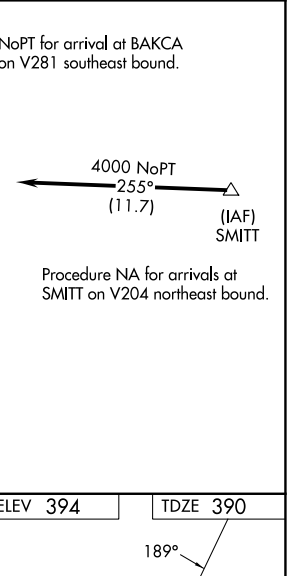
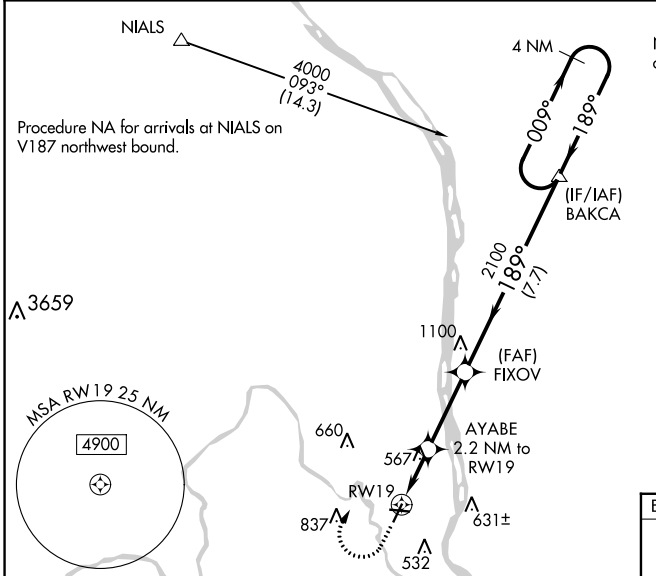
NA For uncompensated Baro-VNAV systems, LNAV/VNAV NA below -15°C (4°F) or above 41°C (106°F). DME/DME RNP-0.3 NA. When local altimeter setting not received, use Pasco altimeter setting and increase all DA 21 feet and all MDA 40 feet. Increase LNAV Cats C and D visibility 1/8 mile and Circling Cat C 1/4 mile. For inop MALS increase LNAV/VNAV all Cats visibility to 7/8 mile and increase LNAV Cat D visibility to 1 3/8 mile. Helicopter visibility reduction below 3/4 SM NA. VDP and Baro/VNAV NA when using Pasco altimeter setting. For inoperative MALS when using Pasco altimeter setting increase LNAV/VNAV all Cats visibility to 7/8 and LNAV Cats C and D visibility to 1 1/2.

Missed approach requires minimum climb of 340 feet per NM to 2000; if unable to meet climb gradient see RNAV (GPS) Y Rwy 19.

MALS

MISSED APPROACH: Climb to 900 then climbing right turn to 4000 direct BAKCA and hold, continue climb-in-hold to 4000.

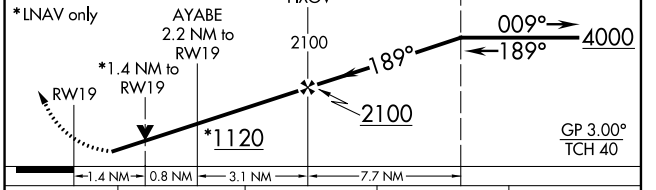
AWOS-3PT 132.675	SPOKANE APP CON * 128.75 377.2	CLNC DEL 122.4	UNICOM 122.7 (CTAF) 0
-----------------------------------	---	---------------------------------	--



900 | 4000 | BAKCA

VGSI and RNAV glidepath not coincident (VGSI Angle 3.00/TCH 30).

BAKCA 4 NM Holding Pattern



CATEGORY	A	B	C	D
LNAV/VNAV DA	#640-3/4 250 (300-3/4)			
LNAV MDA	#880-3/4	490 (500-3/4)	#880-1 1/8	490 (500-1 1/8)
CIRCLING	920-1 526 (600-1)	1000-1 606 (700-1)	1200-2 1/4 806 (900-2 1/4)	1940-3 1546 (1600-3)

REIL Rwy 1 and 19 0

MIRL Rwy 1-19 and 8-26 0

NW-1, 28 NOV 2024 to 26 DEC 2024

NW-1, 28 NOV 2024 to 26 DEC 2024