

WAAS CH 87125 W16A	APP CRS 164°	Rwy Idg TDZE Apt Elev	3218 289 289
--	------------------------	-----------------------------	---

RNAV (GPS) RWY 16

KENEDY RGNL (2R.9)

RNP APCH.

▼ Procedure NA at night. When local altimeter setting not received, use Pleasanton altimeter setting. Rwy 16 helicopter visibility reduction below 1 SM NA.

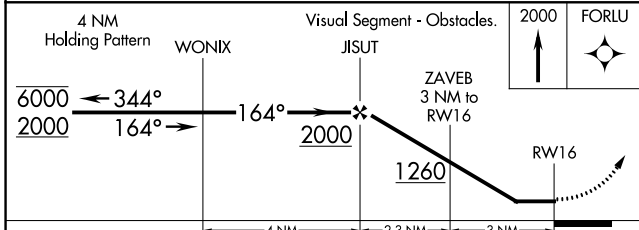
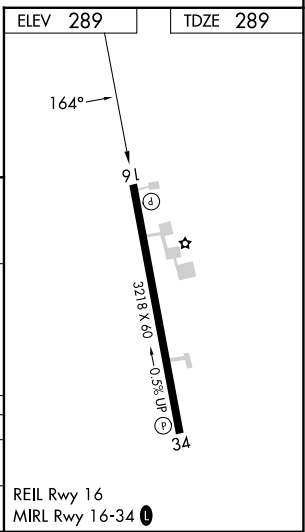
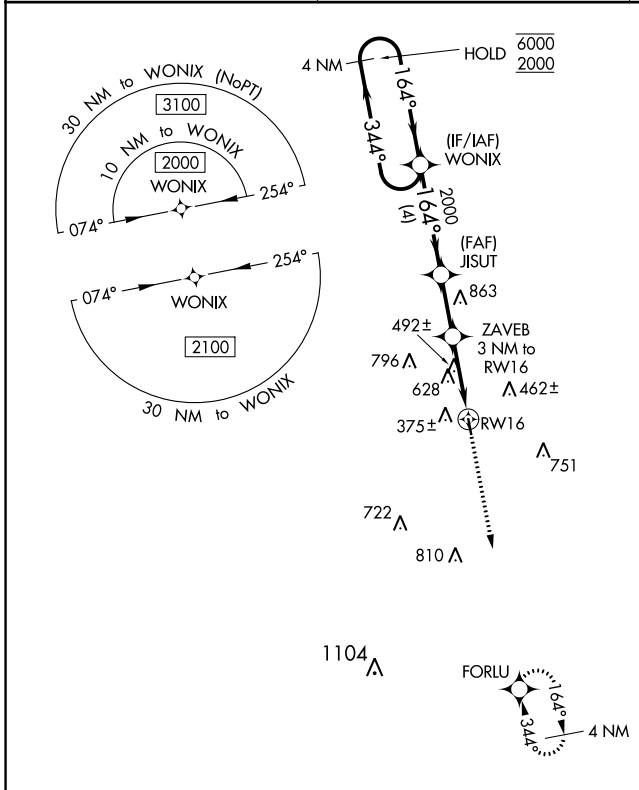
▲ NA

MISSED APPROACH: Climb to 2000 direct FORLU and hold.

AWOS 3-PT
118.45

HOUSTON CENTER
134.6 322.5

UNICOM
123.0 (CTAF) 0



CATEGORY	A	B	C	D
LP MDA	860-1	571 (600-1)	NA	
LNAV MDA	1040-1 751 (800-1)	1040-1¼ 751 (800-1¼)	NA	

REIL Rwy 16
MIRL Rwy 16-34 0

SC-3, 28 NOV 2024 to 26 DEC 2024

SC-3, 28 NOV 2024 to 26 DEC 2024