

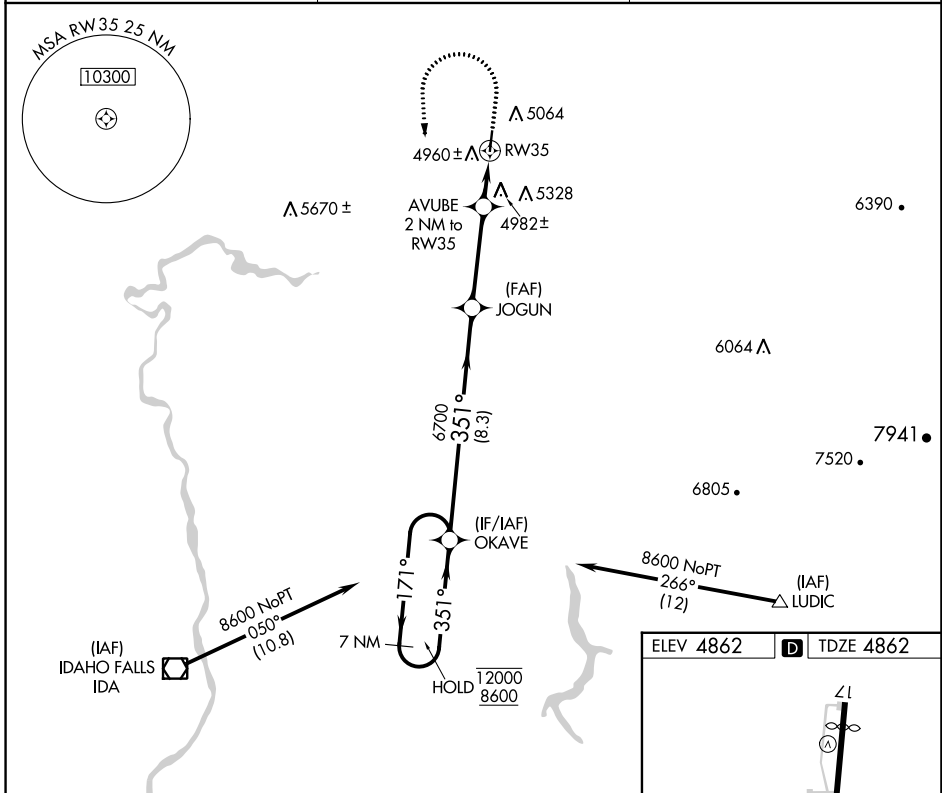
APP CRS 351°	Rwy Idg 3900
	TDZE 4862
	Apt Elev 4862

RNAV (GPS) RWY 35

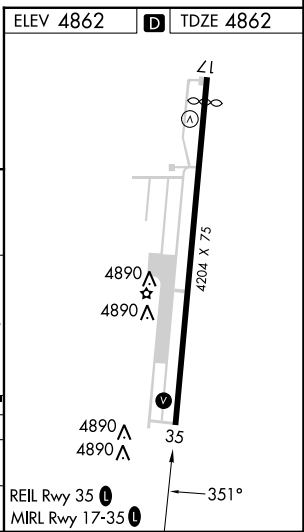
REXBURG-MADISON COUNTY (R.X.E)

RNP APCH - GPS.	MISSED APPROACH: Climb to 5900 then climbing left turn to 8600 direct OKAVE and hold.
Rwy 35 helicopter visibility reduction below 3/4 SM NA.	

ASOS 135.075	SALT LAKE CENTER 128.35 239.25	UNICOM 122.8 (CTAF) 0
------------------------	--	---------------------------------



7 NM Holding Pattern	OKAVE	5900	8600	OKAVE
	12000 8600	← 171°	→ 351°	→ 351°
	JOGUN	AVUBE 2 NM to RW35	1.1 NM to RW35	RW35
	3.00° TCH 40	6700	5540	
	8.3 NM	3.6 NM	0.9 NM	1.1 NM
CATEGORY	A	B	C	D
LNAV MDA	5240-1 378 (400-1)			
CIRCLING	5380-1 518 (600-1)	5580-1 718 (800-1)	5680-2½ 818 (900-2½)	5760-3 898 (900-3)



NW-1, 28 NOV 2024 to 26 DEC 2024

NW-1, 28 NOV 2024 to 26 DEC 2024