

LYONS, KANSAS

AL-5982 (FAA)

23054

WAAS CH <b>99339</b> <b>W17A</b>	APP CRS <b>174°</b>	Rwy Idg TDZE Apt Elev	<b>4400</b> <b>1692</b> <b>1692</b>
--	------------------------	-----------------------------	---

# RNAV (GPS) RWY 17

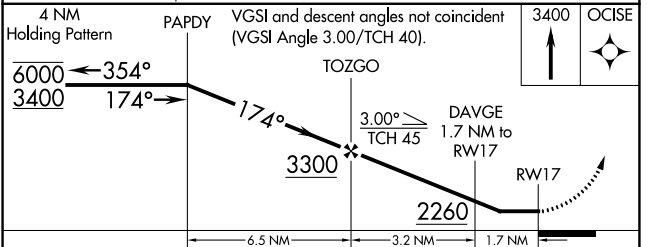
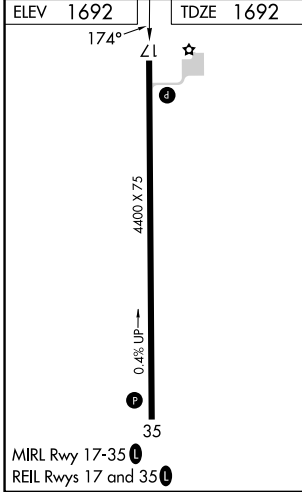
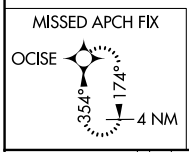
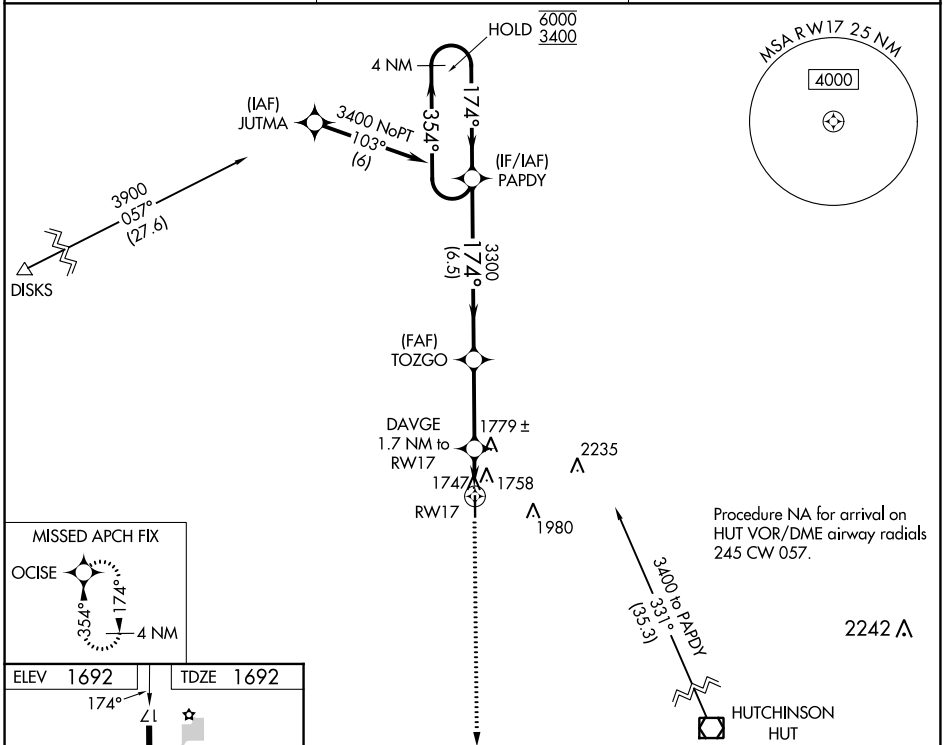
LYONS-RICE COUNTY MUNI (LYO)

RNP APCH.

▼ Rwy 17 helicopter visibility reduction below 1 SM NA.  
 ▲ Straight-in/Circling Rwy 17 NA at night.  
 When local altimeter setting not received, use Hutchinson altimeter setting.

MISSED APPROACH: Climb to 3400 direct OCISE and hold.

AWOS-3P <b>119.925</b>	KANSAS CITY CENTER <b>118.8 322.425</b>	UNICOM <b>122.8</b> (CTAF) <b>0</b>
---------------------------	--	--



CATEGORY	A	B	C	D
LP MDA	2080-1	388 (400-1)	NA	
LNAV MDA	2120-1	428 (500-1)	NA	
<b>C</b> CIRCLING	2260-1	568 (600-1)	NA	

LYONS, KANSAS  
 Orig-A 08NOV18

38°20'N-98°14'W

LYONS-RICE COUNTY MUNI (LYO)  
**RNAV (GPS) RWY 17**

NC-2, 28 NOV 2024 to 26 DEC 2024

NC-2, 28 NOV 2024 to 26 DEC 2024