

WAAS CH <b>42639</b> <b>W35A</b>	APP CRS <b>354°</b>	Rwy Idg TDZE Apt Elev	<b>4400</b> <b>1689</b> <b>1692</b>
--	------------------------	-----------------------------	---

# RNAV (GPS) RWY 35

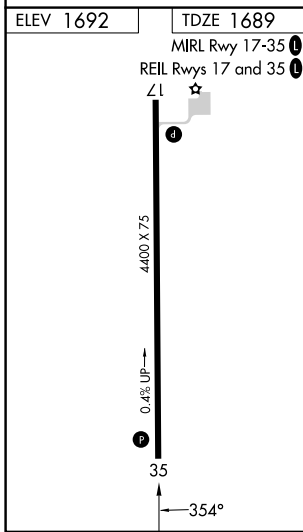
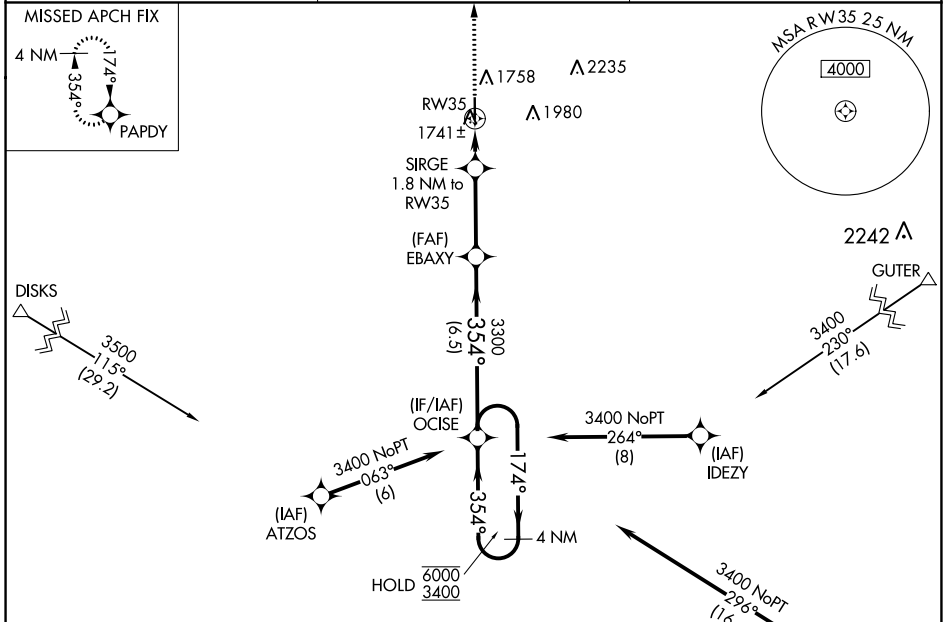
LYONS-RICE COUNTY MUNI (LYO)

RNP APCH.

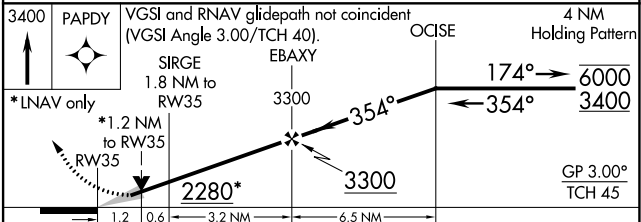
Baro-VNAV and VDP NA when using Hutchinson altimeter setting. For uncompensated Baro-VNAV systems, LNAV/VNAV NA below -18°C or above 54°C. Circling Rwy 17 NA at night. When local altimeter setting not received, use Hutchinson altimeter setting.

MISSED APPROACH: Climb to 3400 direct PAPDY and hold.

AWOS-3P <b>119.925</b>	KANSAS CITY CENTER <b>118.8 322.425</b>	UNICOM <b>122.8 (CTAF) 0</b>
---------------------------	--	---------------------------------



Procedure NA for arrival on HUT VOR/DME airway radials 230 CW 021.



CATEGORY	A	B	C	D
LPV DA	2016-1 1/8	327 (400-1 1/8)		NA
LNAV/VNAV DA	2016-1 1/8	327 (400-1 1/8)		NA
LNAV MDA	2080-1	391 (400-1)		NA
CIRCLING	2260-1	568 (600-1)		NA