

BULLDOG TWO DEPARTURE (OBSTACLE)(BLDG 2 • VISTA)

ATIS ★ 285.45
 CLNC DEL
 134.675 271.6
 GND CON
 134.675 360.2
 TOWER ★
 128.775 340.2
 SOCAL DEP CON
 127.3 323.0

AL-5985 [USN]

| Rwy | Knots | 60 | 120 | 180 | 240 | 300 | 360 |
|--------|----------|-----|-----|------|------|------|------|
| 3 (C) | V/V(fpm) | 486 | 972 | 1458 | 1944 | 2430 | 2916 |
| 21 (B) | V/V(fpm) | 442 | 884 | 1326 | 1768 | 2210 | 2652 |

Minimum Climb Rate

(C) to 800

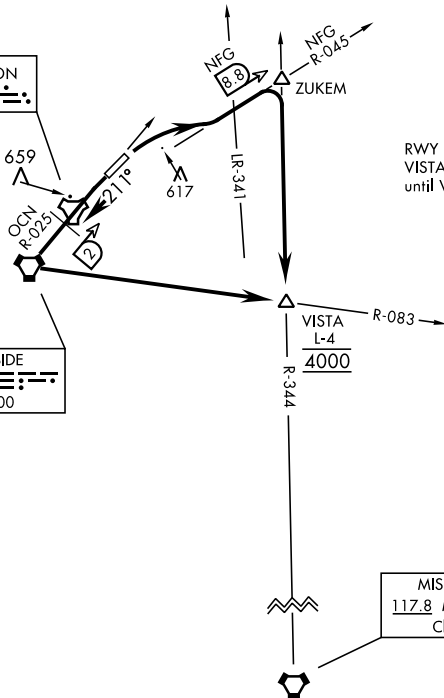
(B) to 1300

NOT FOR CIVIL USE

CAMP PENDLETON
 Chan 55 NFG

OCEANSIDE
 115.3 OCN
 Chan 100

RWY 3: RNAV required ZUKEM to VISTA. Do not exceed 240 KIAS until VISTA.



SW-3, 28 NOV 2024 to 26 DEC 2024

SW-3, 28 NOV 2024 to 26 DEC 2024

DEPARTURE ROUTE DESCRIPTION

TAKE-OFF RWY 3: Climbing right turn to intercept NFG TACAN R-045 to ZUKEM then right turn direct VISTA. Cross VISTA at 4000 or assigned altitude.

TAKE-OFF RWY 21: Climb on heading 211° to intercept OCN VORTAC R-025 then direct OCN then left turn to intercept OCN R-083 direct VISTA. Cross VISTA at 4000 or assigned altitude.