

WAAS CH 40324 W19A	APP CRS 193°	Rwy Idg TDZE Apt Elev	5000 804 817
--	------------------------	-----------------------------	---

RNAV (GPS) RWY 19

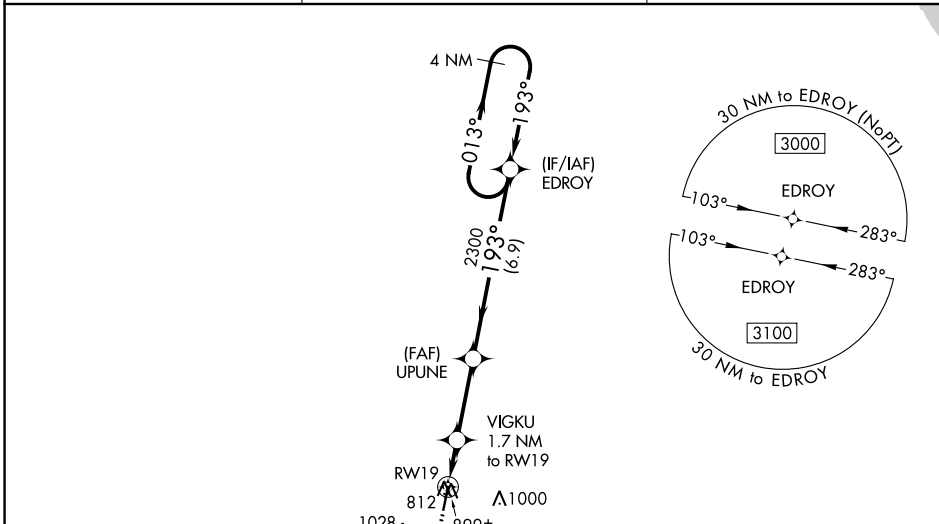
DOUGLAS HUNTER FLD (1M5)

RNP APCH.

⚠ For uncompensated Baro-VNAV systems, LNAV/VNAV NA below -16°C or above 54°C. Baro-VNAV and VDP NA when using Bowling Green altimeter setting. When local altimeter setting not received, use Bowling Green altimeter setting and increase LPV DA to 1144 and all visibilities ¼ mile; increase all LNAV/VNAV DA to 1184 and all visibilities ¼ mile; increase all MDA 100 feet and increase LNAV Cat C/D visibility ⅜ mile.

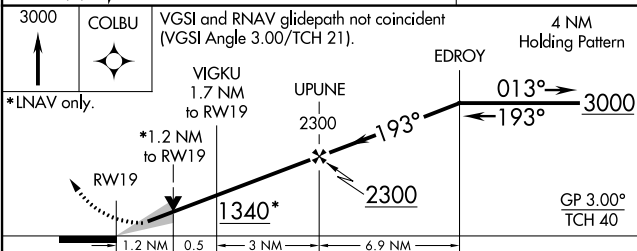
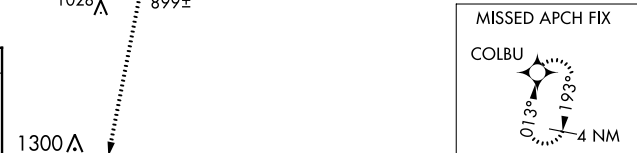
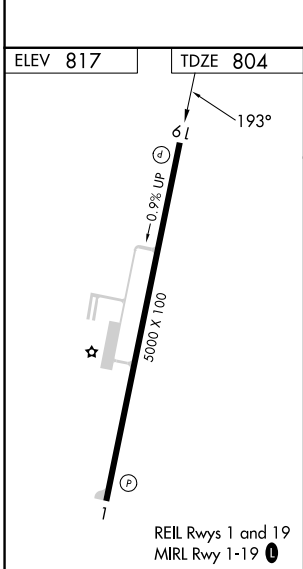
MISSED APPROACH: Climb to 3000 direct COLBU and hold.

AWOS-3PT 118.175	NASHVILLE APP CON 119.35 372.0	UNICOM 122.975 (CTAF)
----------------------------	--	---------------------------------



SE-1, 28 NOV 2024 to 26 DEC 2024

SE-1, 28 NOV 2024 to 26 DEC 2024



CATEGORY	A	B	C	D
LPV DA		1054-1	250 (300-1)	
LNAV/VNAV DA		1094-1 1/8	290 (300-1 1/8)	
LNAV MDA		1160-1	356 (400-1)	