

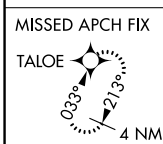
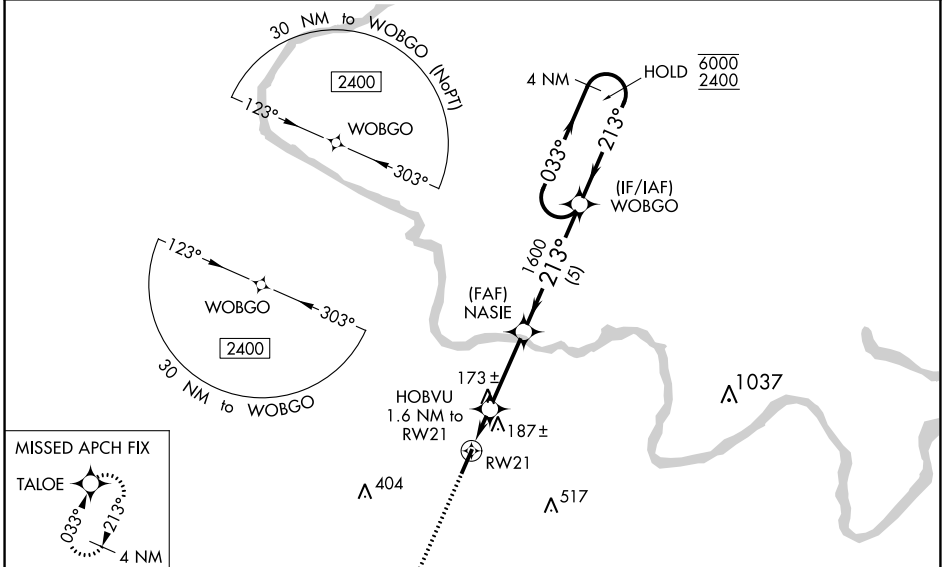
WAAS CH <b>86237</b> <b>W21A</b>	APP CRS <b>213°</b>	Rwy Idg TDZE Apt Elev	<b>5000</b> <b>75</b> <b>75</b>
--	------------------------	-----------------------------	---------------------------------------

# RNAV (GPS) RWY 21

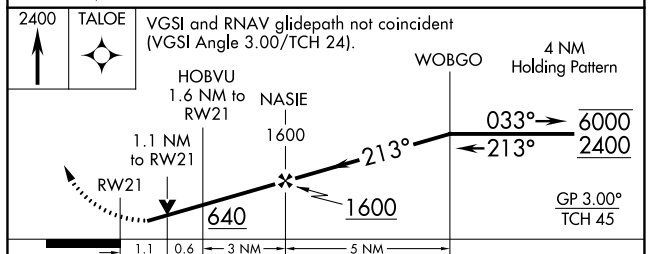
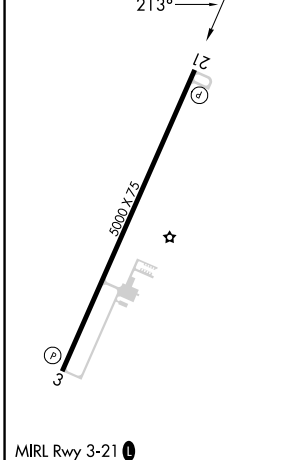
MARTIN COUNTY (MCZ)

RNP APCH - GPS.		MISSED APPROACH: Climb to 2400 direct TALOE and hold, continue climb-in-hold to 2400.
	Circling Rwy 3 NA at night. For uncompensated Baro-VNAV systems, LNAV/VNAV NA below -15°C or above 54°C.	

AWOS-3P <b>118.65</b>	WASHINGTON CENTER <b>123.85 279.65</b>	UNICOM <b>122.8 (CTAF) 0</b>
--------------------------	---	---------------------------------



ELEV 75	TDZE 75
---------	---------



CATEGORY	A	B	C	D
LPV DA		383-1	308 (400-1)	
LNAV/VNAV DA		343-1	268 (300-1)	
LNAV MDA		440-1	365 (400-1)	
CIRCLING	500-1 425 (500-1)	540-1 465 (500-1)	680-1 <sup>3</sup> / <sub>4</sub> 605 (700-1 <sup>3</sup> / <sub>4</sub> )	880-2 <sup>1</sup> / <sub>2</sub> 805 (900-2 <sup>1</sup> / <sub>2</sub> )