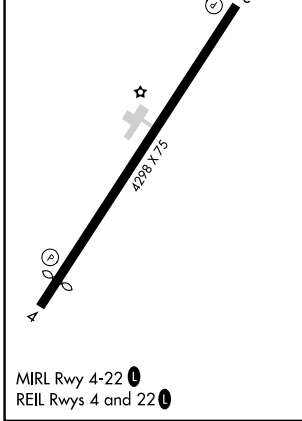
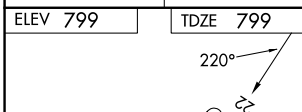
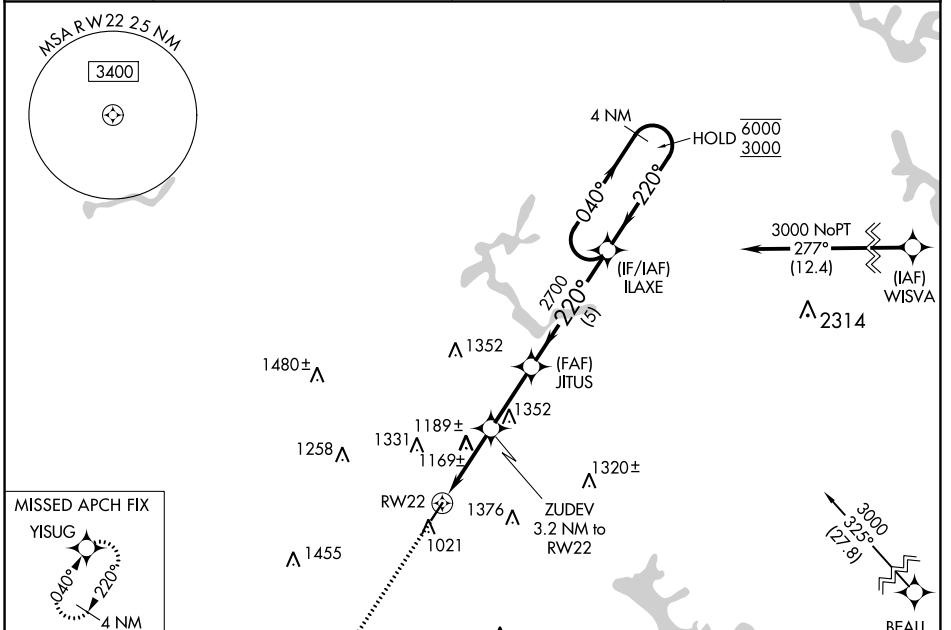


|  |                        |   |
|--|------------------------|---|
| WAAS<br>CH <b>70334</b><br><b>W22A</b> | APP CRS<br><b>220°</b> | Rwy Idg <b>4298</b><br>TDZE <b>799</b><br>Apt Elev <b>799</b> |
|--|------------------------|---|

# RNAV (GPS) RWY 22

CAMBRIDGE MUNI (CDI)

|   |   |  |   |
|---|---|--|---|
| RNP APCH.   |   |  | MISSED APPROACH:<br>Climb to 3000 direct<br>YISUG and hold. |
| <p>⚠️ Circling Rwy 4 NA at night. Rwy 22 helicopter visibility reduction below ¾ SM NA.</p> |   |  |   |
| AWOS-3<br><b>118.525</b>  | (WEST) INDIANAPOLIS CENTER<br><b>124.45 323.275</b> | (EAST) CLEVELAND CENTER<br><b>126.95 239.3</b> | UNICOM<br><b>123.075 (CTAF) 0</b>                           |



|  |                       |                             |                         |                            |  |
|--|-----------------------|-----------------------------|-------------------------|----------------------------|--|
| 3000 YISUG                                   |                       | Visual Segment - Obstacles. |                         | ILAXE 4 NM Holding Pattern |  |
| ZUDEV 3.2 NM to RW22                         |                       | JIUS                        |                         | 6000 / 3000                |  |
| RW22 1.6 NM to RW22                          |                       | 2700                        |                         | 040° / 220°                |  |
| 1840   |                       |                             |                         |                            |  |
| CATEGORY                                     | A                     | B                           | C                       | D                          |  |
| LP MDA                                       | 1420-1                | 621 (700-1)                 | 1420-1¾<br>621 (700-1¾) | NA                         |  |
| LNAV MDA                                     | 1440-1                | 641 (700-1)                 | 1440-1⅞<br>641 (700-1⅞) | NA                         |  |
| <input checked="" type="checkbox"/> CIRCLING | 1460-1<br>661 (700-1) | 1480-1<br>681 (700-1)       | 1800-3<br>1001 (1100-3) | NA                         |  |

EC-2, 28 NOV 2024 to 26 DEC 2024

EC-2, 28 NOV 2024 to 26 DEC 2024