

|  |                        |                             |   |
|--|------------------------|-----------------------------|---|
| WAAS<br>CH <b>69639</b><br><b>W29A</b> | APP CRS<br><b>290°</b> | Rwy Idg<br>TDZE<br>Apt Elev | <b>4979</b><br><b>413</b><br><b>413</b> |
|--|------------------------|-----------------------------|---|

# RNAV (GPS) RWY 29

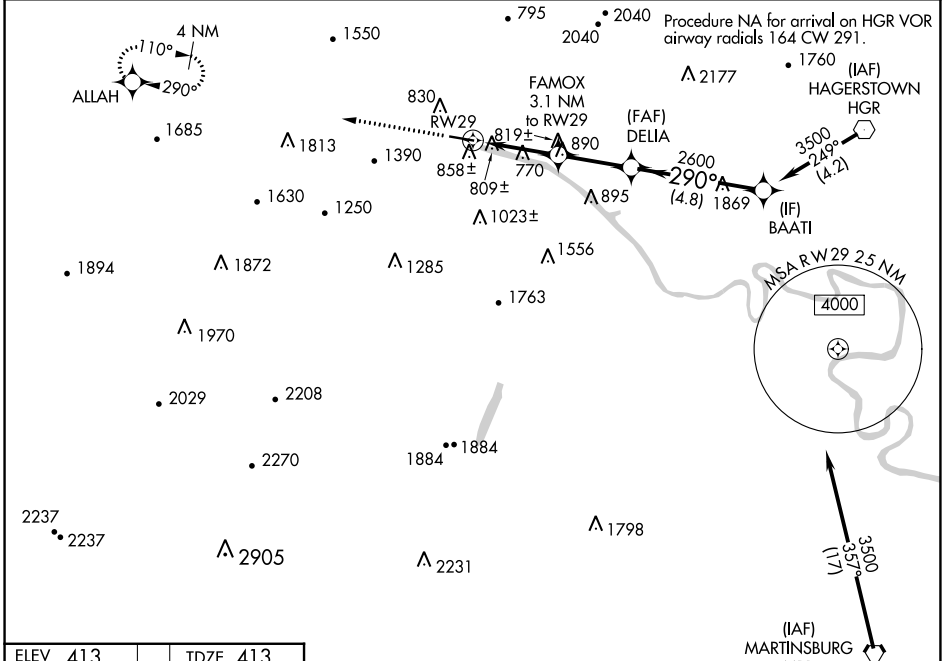
POTOMAC AIRPARK (W35)

RNP APCH.

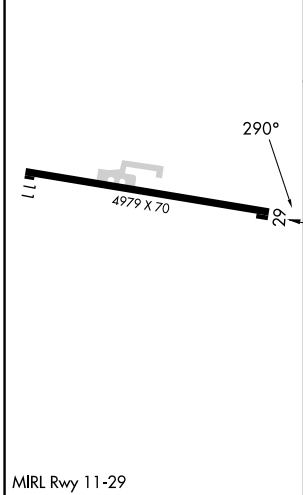
**NA** Procedure NA at night. Rwy 29 helicopter visibility reduction below 1 SM NA. Obtain local altimeter setting on CTAF; when not received, use Martinsburg altimeter setting and increase all MDA's 80 feet and increase LNAV Cat A visibility 1/2 SM.

MISSED APPROACH: Climb to 3500 direct ALLAH and hold.

|   |                      |
|---|----------------------|
| POTOMAC APP CON<br><b>126.825 239.025</b> | CTAF<br><b>122.9</b> |
|---|----------------------|

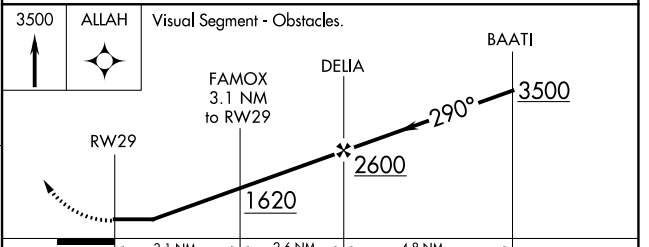


|                 |                 |
|-----------------|-----------------|
| ELEV <b>413</b> | TDZE <b>413</b> |
|-----------------|-----------------|



Procedure NA for arrival on HGR VOR airway radials 164 CW 291.

Procedure NA for arrival on MRB VORTAC airway radials 267 CW 065.



| CATEGORY          | A                             | B                             | C                       | D                       |
|-------------------|-------------------------------|-------------------------------|-------------------------|-------------------------|
| LP MDA            | 1180-1<br>767 (800-1)         | 1180-1 1/4<br>767 (800-1 1/4) | 1180-2 1/2              | 767 (800-2 1/2)         |
| LNAV MDA          | 1220-1<br>807 (900-1)         | 1220-1 1/4<br>807 (900-1 1/4) | 1220-2 1/2              | 807 (900-2 1/2)         |
| <b>C</b> CIRCLING | 1240-1 1/4<br>827 (900-1 1/4) | 1280-1 1/4<br>867 (900-1 1/4) | 1700-3<br>1287 (1300-3) | 1780-3<br>1367 (1400-3) |

NE-4, 28 NOV 2024 to 26 DEC 2024

NE-4, 28 NOV 2024 to 26 DEC 2024