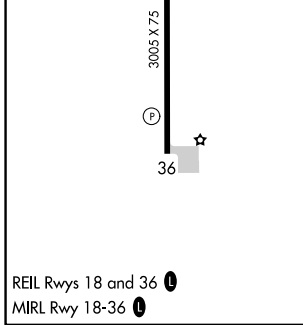
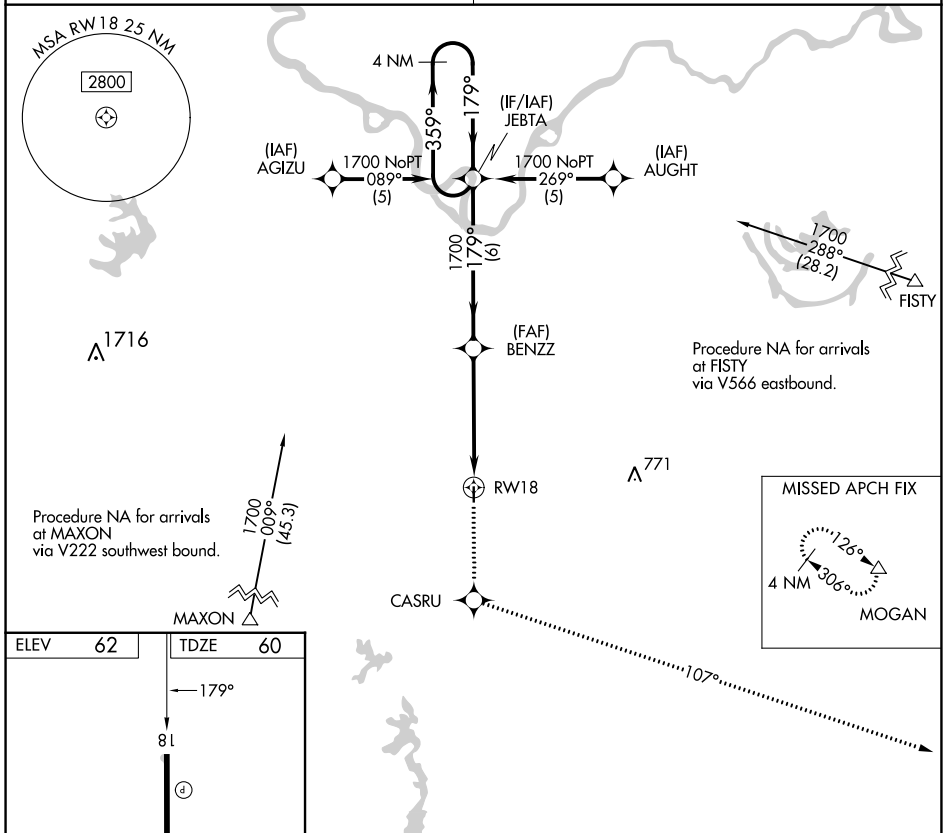


APP CRS	Rwy Idg	3005
179°	TDZE	60
	Apt Elev	62

RNAV (GPS) RWY 18

BUNKIE MUNI (2R6)

RNP APCH.	MISSED APPROACH: Climb to 2000 direct CASRU and via 107° track to MOGAN and hold.
<p>▼ Use Alexandria Intl altimeter setting; when not received, use Esler Rgnl altimeter setting.</p> <p>▲ NA</p>	
POLK APP CON 125.4 302.2	CTAF 122.9



2000	CASRU	107° tr	MOGAN	VGSI and descent angles not coincident (VGSI Angle 3.00/TCH 25).		
				BENZZ	JEBTA	4 NM Holding Pattern
				1700	1700	1700
				3.04° TCH 40		
				5 NM	6 NM	
CATEGORY	A	B	C	D		
LNAV MDA	600-1	540 (600-1)			NA	

REIL Rwy 18 and 36
MIRL Rwy 18-36

SC-4, 28 NOV 2024 to 26 DEC 2024

SC-4, 28 NOV 2024 to 26 DEC 2024