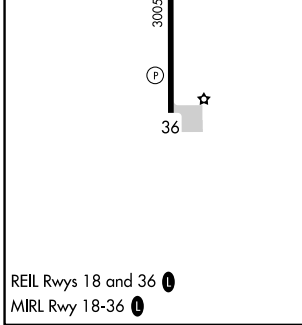
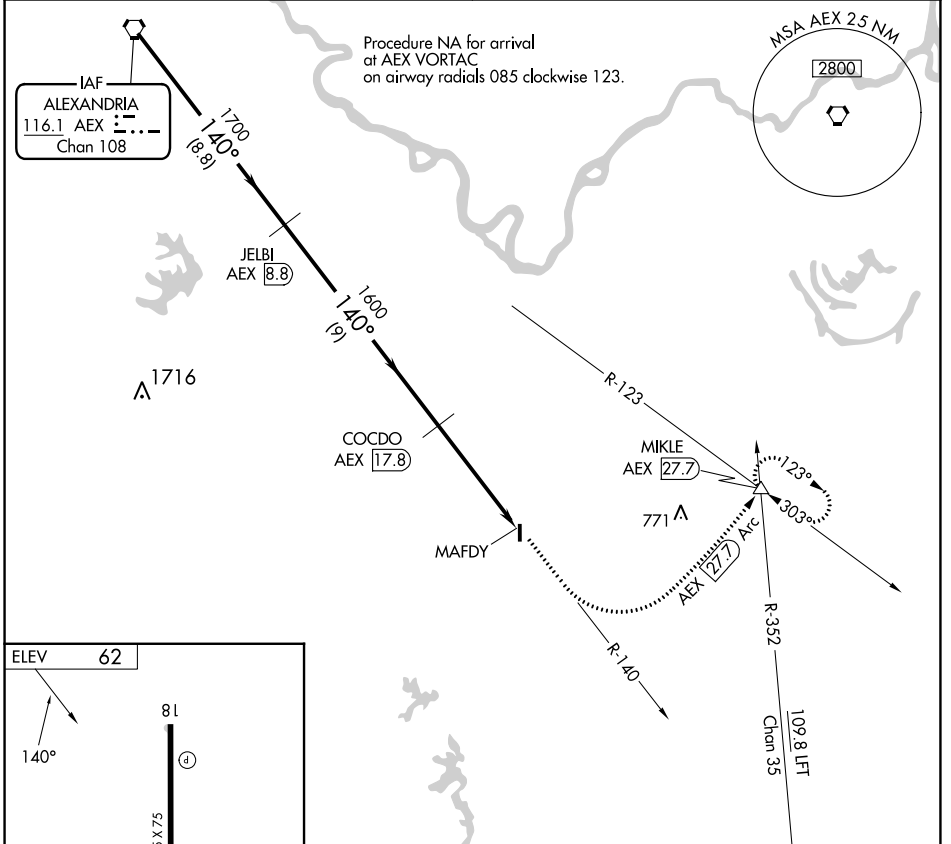


VORTAC AEX 116.1 Chan 108	APP CRS 140°	Rwy Idg TDZE Apt Elev	N/A N/A 62
--	-------------------------------	-----------------------------	---------------------------------------

VOR/DME-A

BUNKIE MUNI (2R6)

NA Use Alexandria Intl altimeter setting; when not received, use Esler Rgnl altimeter setting.	MISSED APPROACH: Climb to 3000 via AEX R-140 and AEX 27.7 DME Arc to MIKLE Int/AEX 27.7 DME and hold.
POLK APP CON 125.4 302.2	CTAF 122.9 0



	AEX VORTAC	JELBI AEX 8.8	COCDO AEX 17.8	MAFDY AEX 22.4	MIKLE AEX 27.7 Arc	3000 AEX R-140
Procedure Turn NA	2000	1700	1600			
	8.8 NM	9 NM	4.6 NM			
CATEGORY	A	B	C	D		
CIRCLING	880-1 818 (900-1)	880-1¼ 818 (900-1¼)			NA	

REIL Rwy 18 and 36
MIRL Rwy 18-36

SC-4, 28 NOV 2024 to 26 DEC 2024

SC-4, 28 NOV 2024 to 26 DEC 2024