

WAAS CH <b>50232</b> <b>W13A</b>	APP CRS <b>125°</b>	Rwy Idg <b>5152</b> TDZE <b>358</b> Apt Elev <b>358</b>
--	------------------------	---

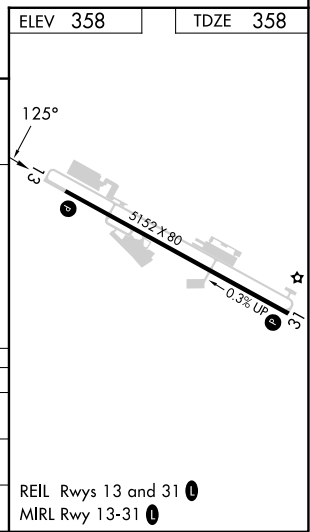
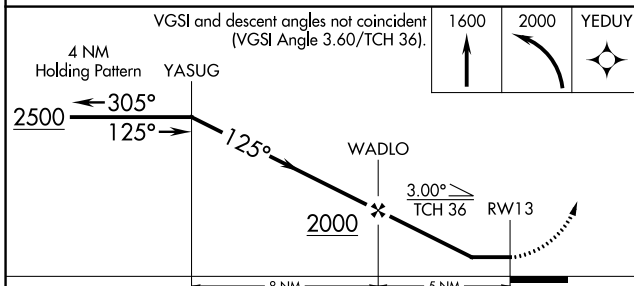
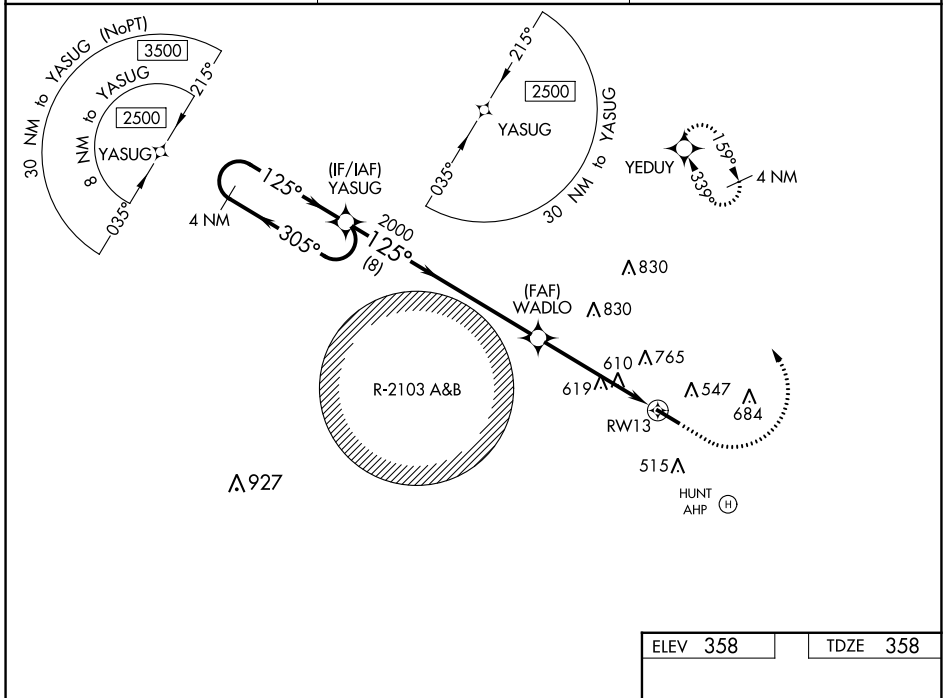
# RNAV (GPS) RWY 13

OZARK/BLACKWELL FLD (71J)

RNP APCH. MISSED APPROACH: Climb to 1600 then climbing left turn to 2000 direct YEDUY and hold.

**▼** Use Dothan altimeter setting; when not received, use Cairns AAF (Fort Novosel) altimeter setting. Procedure NA at night. Rwy 13 helicopter visibility reduction below 1 SM NA.

DHN ASOS <b>135.725</b>	CAIRNS APP CON ★ <b>125.4 327.125</b>	UNICOM <b>122.7 (CTAF) 0</b>
----------------------------	--	---------------------------------



CATEGORY	A	B	C	D
LP MDA	900-1	542 (600-1)	900-1 5/8 542 (600-1 5/8)	NA
LNAV MDA	960-1	602 (700-1)	960-1 3/4 602 (700-1 3/4)	NA
CIRCLING	960-1 602 (700-1)	1100-1 1/4 742 (800-1 1/4)	1100-2 1/4 742 (800-2 1/4)	NA

SE-4, 28 NOV 2024 to 26 DEC 2024

SE-4, 28 NOV 2024 to 26 DEC 2024