

(TRUCK5.TRUCK) 24025

TRUCK FIVE DEPARTURE (OBSTACLE)

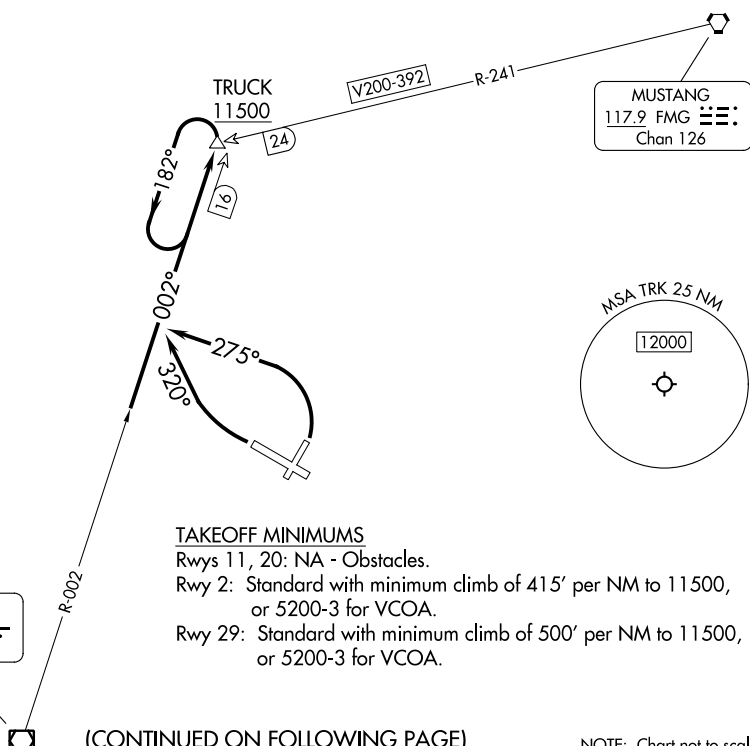
AL-6021 (FAA)

TRUCKEE-TAHOE (TRK)
TRUCKEE, CALIFORNIA

OAKLAND CENTER
127.95 316.1
D-ATIS
118.0
TRUCKEE TOWER *
120.575
UNICOM
122.95

MUSTANG
117.9 FMG
Chan 126

PALISADES
113.2 SWR
Chan 79



TAKEOFF MINIMUMS

Rwys 11, 20: NA - Obstacles.

Rwy 2: Standard with minimum climb of 415' per NM to 11500, or 5200-3 for VCOA.

Rwy 29: Standard with minimum climb of 500' per NM to 11500, or 5200-3 for VCOA.

(CONTINUED ON FOLLOWING PAGE)

NOTE: Chart not to scale.

DEPARTURE ROUTE DESCRIPTION

TAKEOFF RUNWAY 2: Climbing left turn to 11500 on heading 275° and SWR R-002 to TRUCK INT, thence. . . , or for climb in visual conditions cross Truckee-Tahoe Airport heading 290° at or above 9100, then proceed on SWR R-002 to TRUCK INT. When executing VCOA, notify ATC prior to departure. Thence. . .

TAKEOFF RUNWAY 29: Climbing right turn to 11500 on heading 320° and SWR VOR/DME R-002 to TRUCK INT, thence. . . , or for climb in visual conditions cross Truckee-Tahoe Airport heading 290° at or above 9100, then proceed on SWR R-002 to TRUCK INT. When executing VCOA, notify ATC prior to departure. thence. . .

. . . continue climb in TRUCK INT holding pattern to cross TRUCK INT at or above 11500 before proceeding on course.

VCOA RUNWAYS 2, 29: Obtain ATC approval for VCOA when requesting IFR clearance. Climb in visual conditions to cross Truckee-Tahoe Airport heading 290° at or above 9100, then proceed on SWR VOR/DME R-002 to TRUCK INT, thence. . .

. . . continue climb in TRUCK INT holding pattern to cross TRUCK INT at or above 11500 before proceeding on course.

TRUCK FIVE DEPARTURE (OBSTACLE)

(TRUCK5.TRUCK) 29DEC22

TRUCKEE, CALIFORNIA
TRUCKEE-TAHOE (TRK)

SW-2, 28 NOV 2024 to 26 DEC 2024

SW-2, 28 NOV 2024 to 26 DEC 2024

TAKEOFF OBSTACLE NOTES

Rwy 2: Trees, electrical system beginning 32' from DER, 189' left of centerline, up to 5934' MSL. Trees beginning 448' from DER, 431' right of centerline, up to 5968' MSL. Trees beginning 1 NM from DER, 1765' right of centerline, up to 6078' MSL. Tree 1 NM from DER, 1920' right of centerline, 6125' MSL. Trees beginning 1 NM from DER, 1540' right of centerline, up to 6130' MSL. Tree 1.1 NM from DER, 2002' right of centerline, 6145' MSL. Tree 1.1 NM from DER, 1766' right of centerline, 6153' MSL. Trees beginning 1.1 NM from DER, 1340' right of centerline, up to 6154' MSL. Trees beginning 1.1 NM from DER, 1302' right of centerline, up to 6182' MSL. Trees beginning 1.1 NM from DER, 1115' right of centerline, up to 6242' MSL. Trees beginning 1.1 NM from DER, 1067' right of centerline, up to 6248' MSL. Trees beginning 1.2 NM from DER, 1147' right of centerline, up to 6253' MSL. Trees beginning 1.2 NM from DER, 1351' right of centerline, up to 6266' MSL. Trees beginning 1.2 NM from DER, 929' right of centerline, up to 6272' MSL. Trees beginning 1.2 NM from DER, 818' right of centerline, up to 6280' MSL. Trees beginning 1.3 NM from DER, 1744' right of centerline, up to 6281' MSL. Trees beginning 1.3 NM from DER, 639' right of centerline, up to 6288' MSL. Trees beginning 1.3 NM from DER, 433' right of centerline, up to 6305' MSL. Trees, building beginning 1.4 NM from DER, 40' right of centerline, up to 6315' MSL. Tree 1.5 NM from DER, 7' left of centerline, 6137' MSL.

Rwy 29: Sign 23' from DER, 157' left of centerline, 3' AGL/5902' MSL. Trees beginning 73' from DER, 400' right of centerline, up to 5968' MSL. Pole 144' from DER, 217' left of centerline, 6' AGL/5905' MSL. Trees beginning 206' from DER, 55' right of centerline, up to 5971' MSL. Tree 213' from DER, 546' left of centerline, 5923' MSL. Trees beginning 637' from DER, 81' left of centerline, up to 6005' MSL. Tree 5956' from DER, 542 right of centerline, 6058' MSL. Trees beginning 1.6 NM from DER, 1356' left of centerline, up to 6153' MSL. Trees beginning 1.6 NM from DER, 1384' left of centerline, up to 6197' MSL. Tress, water tower beginning 1.6 NM from DER, 1738' left of centerline, up to 6206' MSL. Trees, pole beginning 1.6 NM from DER, 249' left of centerline, up to 6268' MSL. Tree 1.8 NM from DER, 3070' right of centerline, 6192' MSL. Tree 1.8 NM from DER, 2728' right of centerline, 6197' MSL. Tree 1.8 NM from DER, 1614' right of centerline, 6204' MSL. Trees beginning 1.8 NM from DER, 1108' right of centerline, up to 6211' MSL. Tree 1.8 NM from DER, 2581' right of centerline, 6259' MSL. Trees beginning 1.8 NM from DER, 2144' right of centerline, up to 6265' MSL. Trees beginning 1.9 NM from DER, 183' right of centerline, up to 6266' MSL. Tree 1.9 NM from DER, 3540' right of centerline, 6308' MSL. Tree 1.9 NM from DER, 3135' right of centerline, 6351' MSL. Trees beginning 1.9 NM from DER, 307' right of centerline, up to 6379' MSL. Tree 2 NM from DER, 3583' right of centerline, 6391' MSL. Trees beginning 2 NM from DER, 1301' right of centerline, up to 6458' MSL. Trees beginning 2 NM from DER, 535' right of centerline, up to 6468' MSL. Tree 2 NM from DER, 639' left of centerline, 6270' MSL. Tree 2.1 NM from DER, 2242' left of centerline, 6315' MSL. Trees beginning 2.1 NM from DER, 50' left of centerline, up to 6332' MSL. Tree 2.1 NM from DER, 2881' right of centerline, 6502' MSL. Trees beginning 2.1 NM from DER, 214' right of centerline, up to 6505' MSL. Tree 2.1 NM from DER, 2769' left of centerline, 6439' MSL. Trees beginning 2.1 NM from DER, 259' left of centerline, up to 6440' MSL. Tree 2.1 NM from DER, 3037' right of centerline, 6547' MSL. Trees beginning 2.1 NM from DER, 636' right of centerline, up to 6573' MSL. Trees beginning 2.2 NM from DER, 1171' right of centerline, up to 6583' MSL. Trees beginning 2.2 NM from DER, 733' left of centerline, up to 6460' MSL. Trees, building beginning 2.2 NM from DER, 20' left of centerline, up to 6549' MSL. Trees beginning 2.2 NM from DER, 525' right of centerline, up to 6612' MSL. Trees beginning 2.3 NM from DER, 1111' right of centerline, up to 6657' MSL. Tree beginning 2.3 NM from DER, 2179' right of centerline, up to 6682' MSL. Trees beginning 2.3 NM from DER, 412' right of centerline, up to 6731' MSL. Trees beginning 2.4 NM from DER, 371' right of centerline, up to 6776' MSL. Tower 2.5 NM from DER, 2714' right of centerline, 93' AGL/6817' MSL. Antenna, trees beginning 2.5 NM from DER, 73' right of centerline, up to 88' AGL/6822' MSL.

SW-2, 28 NOV 2024 to 26 DEC 2024

SW-2, 28 NOV 2024 to 26 DEC 2024