

| | | |
|--|------------------------|---|
| WAAS CH 83489 W35A | APP CRS 347° | Rwy Idg 4068 TDZE 1178 Apt Elev 1179 |
|--|------------------------|---|

RNAV (GPS) RWY 35

STELLAR AIRPARK (P19)

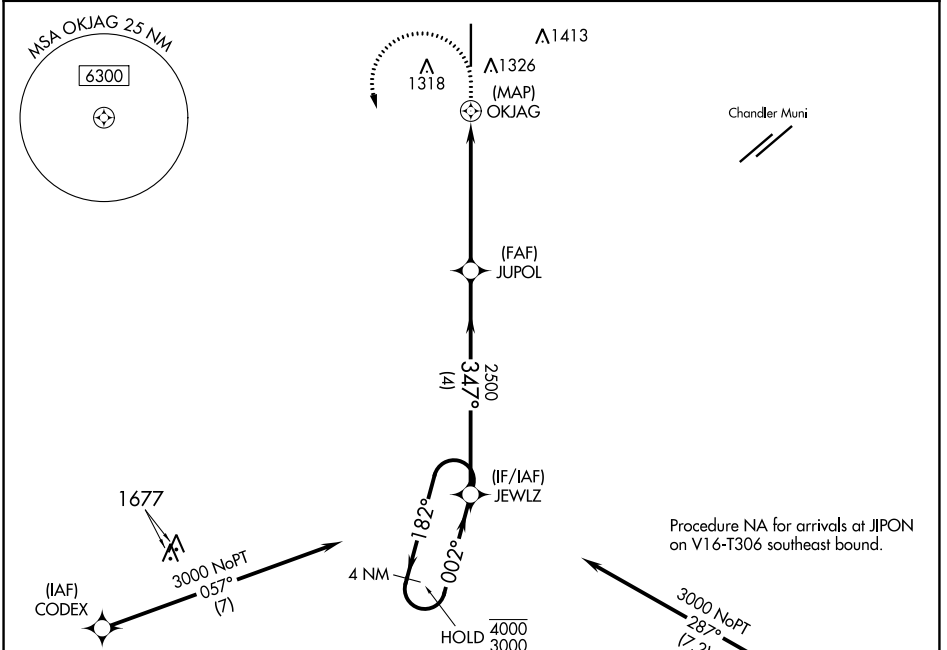
RNP APCH - GPS.
 ▼ Use Phoenix Sky Harbor Intl altimeter setting. Rwy 35 helicopter visibility reduction below 1 SM NA. Activate MRL Rwy 17-35 and PAPI Rwy 17-35 - CTAf. RADAR required.
 ▲ NA

MISSED APPROACH: (Do not exceed 200K until JEWLZ)
 Climb to 1700 then climbing left turn to 3000 direct JEWLZ and hold.

PHX ASOS
127.575

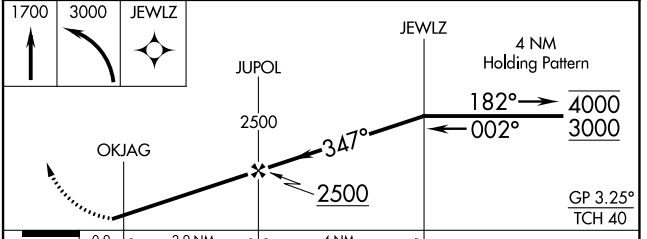
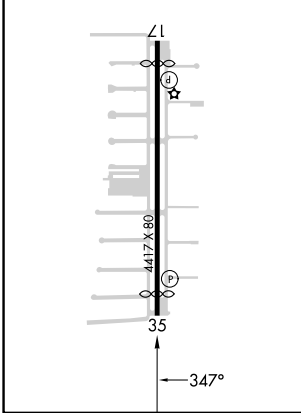
PHOENIX APP CON
123.7 363.0

UNICOM
122.975 (CTAF) 0



| | | |
|-----------|----------|-----------|
| ELEV 1179 | D | TDZE 1178 |
|-----------|----------|-----------|

MRL Rwy 17-35
 REIL Rwy 17 and 35



| CATEGORY | A | B | C | D |
|----------|--------------------|-------------|-------------------------------|----|
| LPV DA | 1457-1 279 (300-1) | | | NA |
| LNAV MDA | 1620-1 | 442 (500-1) | 1620-1 3/8 442 (500-1 3/8) | NA |
| CIRCLING | 1760-1 | 581 (600-1) | 1760-1 1/2 581 (600-1 1/2) | NA |

SW-4, 28 NOV 2024 to 26 DEC 2024

SW-4, 28 NOV 2024 to 26 DEC 2024