

WAAS CH 77815 W11A	APP CRS 103°	Rwy Idg TDZE Apt Elev	5500 107 107
--	------------------------	-----------------------------	---

RNAV (GPS) RWY 11

JESUP-WAYNE COUNTY (JES)

NA Baro-VNAV NA when using Savannah/Hilton Head Intl altimeter setting. For uncompensated Baro-VNAV systems, LNAV/VNAV NA below -1 5°C (5°F) or above 54°C (130°F). DME/DME RNP-0.3 NA. Helicopter visibility reduction below 1 statute mile NA. When local altimeter setting not received, use Savannah/Hilton Head Intl altimeter setting: increase LPV DA to 583, LNAV/VNAV DA to 597, and visibility LPV all Cats ½ SM and LNAV/VNAV all Cats ¼ SM; increase all MDAs 140 feet and visibility LNAV Cat C and Circling Cat C ½ SM. VDP NA when using Savannah/Hilton Head Intl altimeter setting.

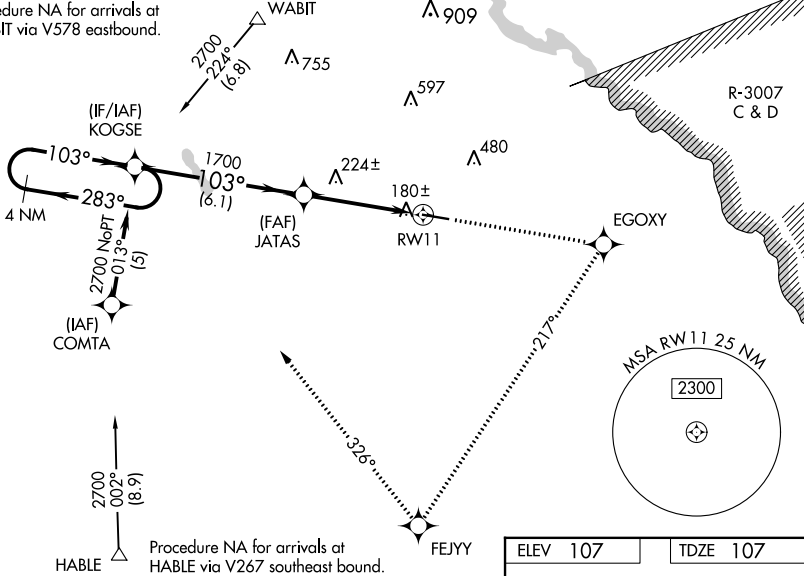
MISSED APPROACH: Climb to 2700 direct EGOXY and right turn via track 217° to FEJYY and right turn via track 326° to KOGSE and hold.

AWOS-3PT
118.125

JACKSONVILLE CENTER
126.75 277.4

UNICOM
122.8 (CTAF)

Procedure NA for arrivals at WABIT via V578 eastbound.



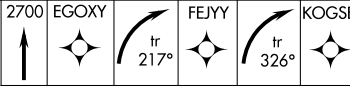
SE-4, 28 NOV 2024 to 26 DEC 2024

SE-4, 28 NOV 2024 to 26 DEC 2024

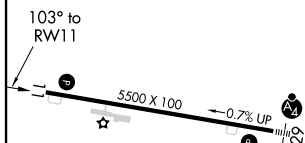
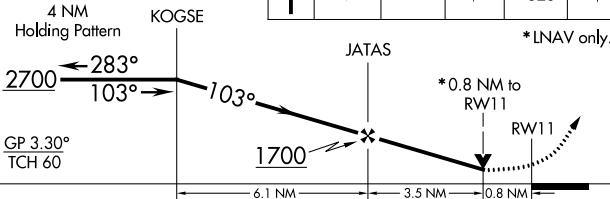
Procedure NA for arrivals at HABLE via V267 southeast bound.

ELEV 107 TDZE 107

VGSI and RNAV glidepath not coincident (VGSI Angle 3.75/TCH 47).



4 NM Holding Pattern



CATEGORY	A	B	C	D
LPV DA		462-1	355 (400-1)	NA
LNAV/VNAV DA		476-1¼	369 (400-1¼)	NA
LNAV MDA		480-1	373 (400-1)	NA
CIRCLING	520-1 413 (500-1)	560-1 453 (500-1)	780-2 673 (700-2)	NA

MIRL Rwy 11-29