

WAAS CH 45818 W18A	APP CRS 180°	Rwy ldg 5001
		TDZE 44
		Apt Elev 46


RNAV (GPS) RWY 18

HAMMOND NORTHSHORE RGNL (HDC)

RNP APCH - GPS.

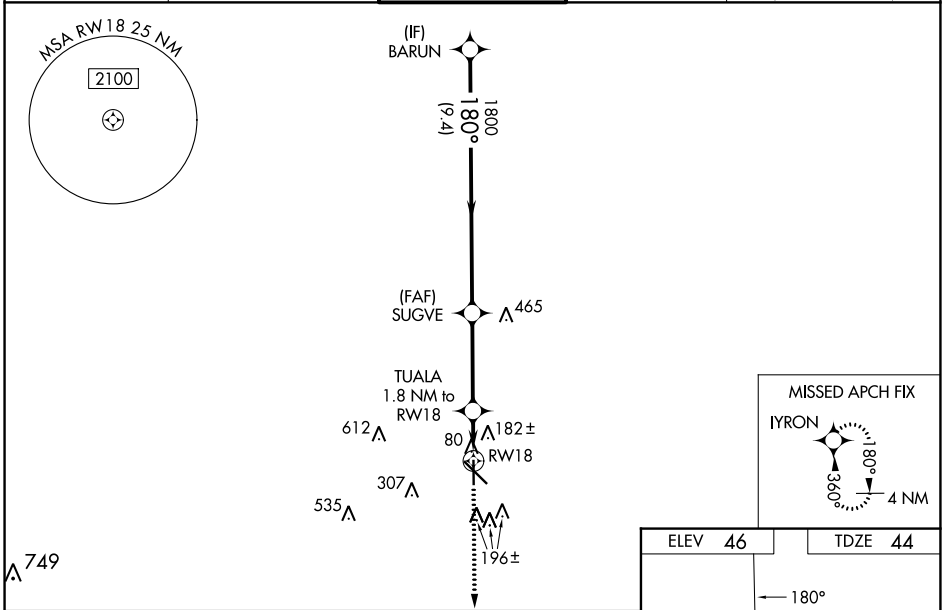
▼ Baro-VNAV and VDP NA when using Louis Armstrong New Orleans Intl altimeter setting. For uncompensated Baro-VNAV systems, LNAV/VNAV NA below -15°C or above 54°C. When local altimeter setting not received, use Louis Armstrong New Orleans Intl altimeter setting and increase LPV DA to 339 feet; increase LNAV/VNAV DA to 555 feet and all visibilities ¼ SM. Increase all MDAs 100 feet and LNAV visibility Cat C/D ½ SM, and Circling visibility Cat C/D ½ SM. For inop ALS when using Louis Armstrong New Orleans Intl altimeter increase LPV all Cats visibility to 7/8 SM; LNAV/VNAV all Cats visibility to 1 3/8 SM and LNAV Cats C/D visibility to 1 3/8 SM. For inop ALS increase LNAV/VNAV all Cats visibility to 1 ¼ SM and LNAV Cat C/D visibility to 1 1/8 SM.


MALSR

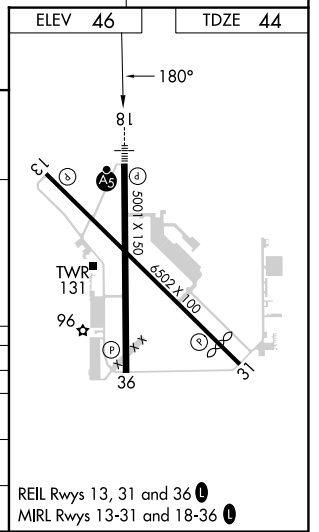


MISSED APPROACH:
Climb to 2200 direct
IYRON and hold.

ATIS 118.325	NEW ORLEANS APP CON 119.3 350.35	HAMMOND TOWER ★ 120.575 (CTAF) 	GND CON 119.85	CLNC DEL 119.3 (When twr closed)
------------------------	--	--	--------------------------	---



	BARUN	SUGVE	TUALA 1.8 NM to RWY 18	
	1800	1800	660	2200
	180°	180°	180°	IYRON
	9.4 NM	3.5 NM	0.7 NM	1.1 NM
CATEGORY	A	B	C	D
LPV DA	250-1/2		206 (300-1/2)	
LNAV/VNAV DA	466-3/4		422 (500-3/4)	
LNAV MDA	460-1/2	416 (500-1/2)	460-3/4	416 (500-3/4)
 CIRCLING	500-1	454 (500-1)	620-1 1/2 574 (600-1 1/2)	920-2 3/4 874 (900-2 3/4)



SC-4, 28 NOV 2024 to 26 DEC 2024

SC-4, 28 NOV 2024 to 26 DEC 2024