

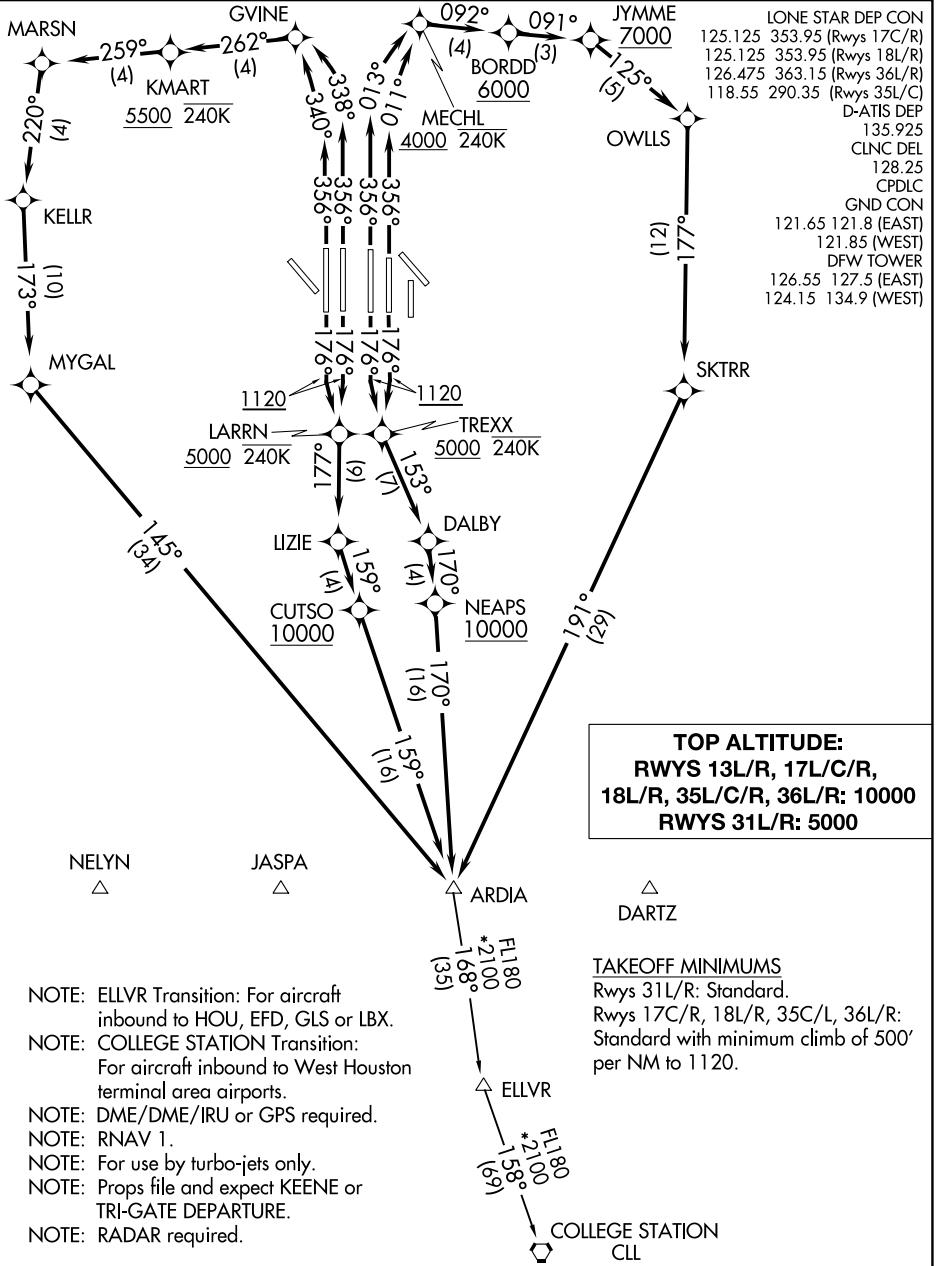
(ARDIA7.ARDIA) 24305

AL-6039 (FAA)

DALLAS-FORT WORTH INTL (DFW)

# ARDIA SEVEN DEPARTURE (RNAV)

DALLAS-FORT WORTH, TEXAS



SC-2, 28 NOV 2024 to 26 DEC 2024

SC-2, 28 NOV 2024 to 26 DEC 2024

**TOP ALTITUDE:**  
**RWYS 13L/R, 17L/C/R,**  
**18L/R, 35L/C/R, 36L/R: 10000**  
**RWYS 31L/R: 5000**

TAKEOFF MINIMUMS  
 Rwys 31L/R: Standard.  
 Rwys 17C/R, 18L/R, 35C/L, 36L/R:  
 Standard with minimum climb of 500'  
 per NM to 1120.

- NOTE: ELLVR Transition: For aircraft inbound to HOU, EFD, GLS or LBX.
- NOTE: COLLEGE STATION Transition: For aircraft inbound to West Houston terminal area airports.
- NOTE: DME/DME/IRU or GPS required.
- NOTE: RNAV 1.
- NOTE: For use by turbo-jets only.
- NOTE: Props file and expect KEENE or TRI-GATE DEPARTURE.
- NOTE: RADAR required.

NOTE: Chart not to scale.

(CONTINUED ON FOLLOWING PAGE)

# ARDIA SEVEN DEPARTURE (RNAV)

(ARDIA7.ARDIA) 10OCT19

DALLAS-FORT WORTH, TEXAS

DALLAS-FORT WORTH INTL (DFW)



DEPARTURE ROUTE DESCRIPTION

TAKEOFF RUNWAYS 17C/R: Climb on heading 176° to 1120, then direct TREXX, cross TREXX at or above 5000 and at or below 240K, then on track 153° to DALBY, then on track 170° to cross NEAPS at or above 10000, then on depicted route to ARDIA, thence . . . .

TAKEOFF RUNWAYS 18L/R: Climb on heading 176° to 1120, then direct LARRN, cross LARRN at or above 5000 and at or below 240K, then on track 177° to LIZIE, then on track 159° to cross CUTSO at or above 10000, then on depicted route to ARDIA, thence . . . .

TAKEOFF RUNWAYS 31L/R: Climb on heading assigned by ATC, for RADAR vectors to ARDIA, maintain 5000, expect filed altitude ten minutes after departure.

TAKEOFF RUNWAY 35C: Climb on heading 356° to intercept course 011° to cross MECHL at or above 4000 and at or below 240K, then on track 092° to cross BORDD at or above 6000, then on track 091° to cross JYMME at or above 7000, then on depicted route to ARDIA, thence . . . .

TAKEOFF RUNWAY 35L: Climb on heading 356° to intercept course 013° to cross MECHL at or above 4000 and at or below 240K, then on track 092° to cross BORDD at or above 6000, then on track 091° to cross JYMME at or above 7000, then on depicted route to ARDIA, thence . . . .

TAKEOFF RUNWAY 36L: Climb on heading 356° to intercept course 340° to GVINE, then on course 262° to cross KMART at or above 5500 and at or below 240K, then on depicted route to ARDIA, thence . . . .

TAKEOFF RUNWAY 36R: Climb heading 356° to intercept course 338° to GVINE, then on course 262° to cross KMART at or above 5500 and at or below 240K, then on depicted route to ARDIA, thence . . . .

. . . . (transition) Maintain 10000, expect filed altitude ten minutes after departure.

COLLEGE STATION TRANSITION (ARDIA7.CLL):

ELLVR TRANSITION (ARDIA7.ELLVR):

SC-2, 28 NOV 2024 to 26 DEC 2024

SC-2, 28 NOV 2024 to 26 DEC 2024