

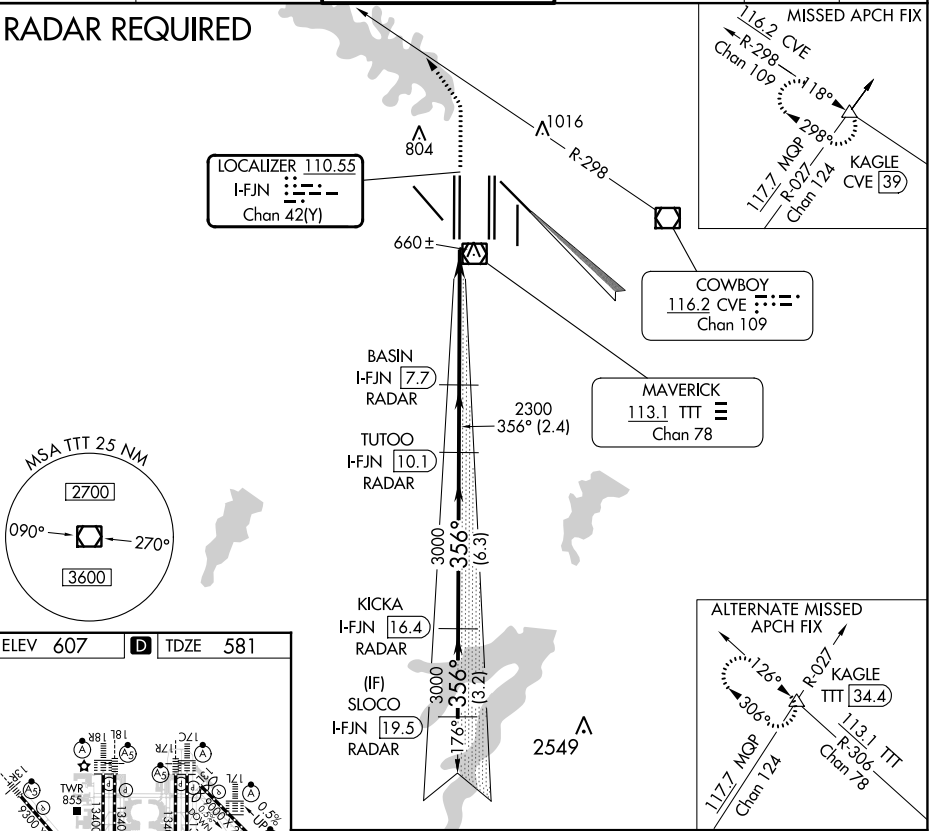
LOC/DME I-FJN 110.55 Chan 42 (Y)	APP CRS 356°	Rwy Idg TDZE Apt Elev	13401 581 607
--	------------------------	-----------------------------	--

CONVERGING ILS RWY 36R

DALLAS-FORT WORTH INTL (DFW)

Simultaneous approach authorized with Converging ILS Rwy 31R. DME or Radar required.		MALSR 	MISSED APPROACH: Climb to 1100, then climbing left turn to 3000 on heading 320° and CVE VOR/DME R-298 to KAGLE INT/CVE 39 DME and hold.			
D-ATIS ARR 123.775 DEP 135.925	LONE STAR APP CON 118.425	DFW TOWER 126.55 127.5 EAST 124.15 134.9 WEST		GND CON 121.65 121.8 EAST 121.85 WEST	CLNC DEL 128.25	CPDLC

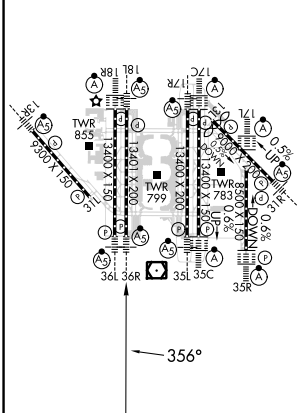
RADAR REQUIRED



SC-2, 28 NOV 2024 to 26 DEC 2024

SC-2, 28 NOV 2024 to 26 DEC 2024

ELEV 607	D	TDZE 581
-----------------	----------	-----------------



HIRL all Rws
REIL Rws 13L and 31L
TDZ/CL all Rws except 13L and 31L

1100	3000	CVE R-298	KAGLE	BASIN I-FJN 7.7	Tutoo I-FJN 10.1	Kicka I-FJN 16.4	SLOCO I-FJN 19.5	4000
hdg 320°				RADAR	RADAR	RADAR	RADAR	GS 3.00° TCH 50
356°		356°		356°		356°		2300
5.3 NM		2.4 NM		6.3 NM		3.2 NM		VGSI and ILS glidepath not coincident (VGSI Angle 3.00/TCH 66).
CATEGORY	A	B	C	D				
S-ILS 36R	781/18		200 (200-½)					