

(GRABE8.GRABE) 24305

AL-6039 (FAA)

DALLAS-FORT WORTH INTL (DFW)  
DALLAS-FORT WORTH, TEXAS

# GRABE EIGHT DEPARTURE (RNAV)

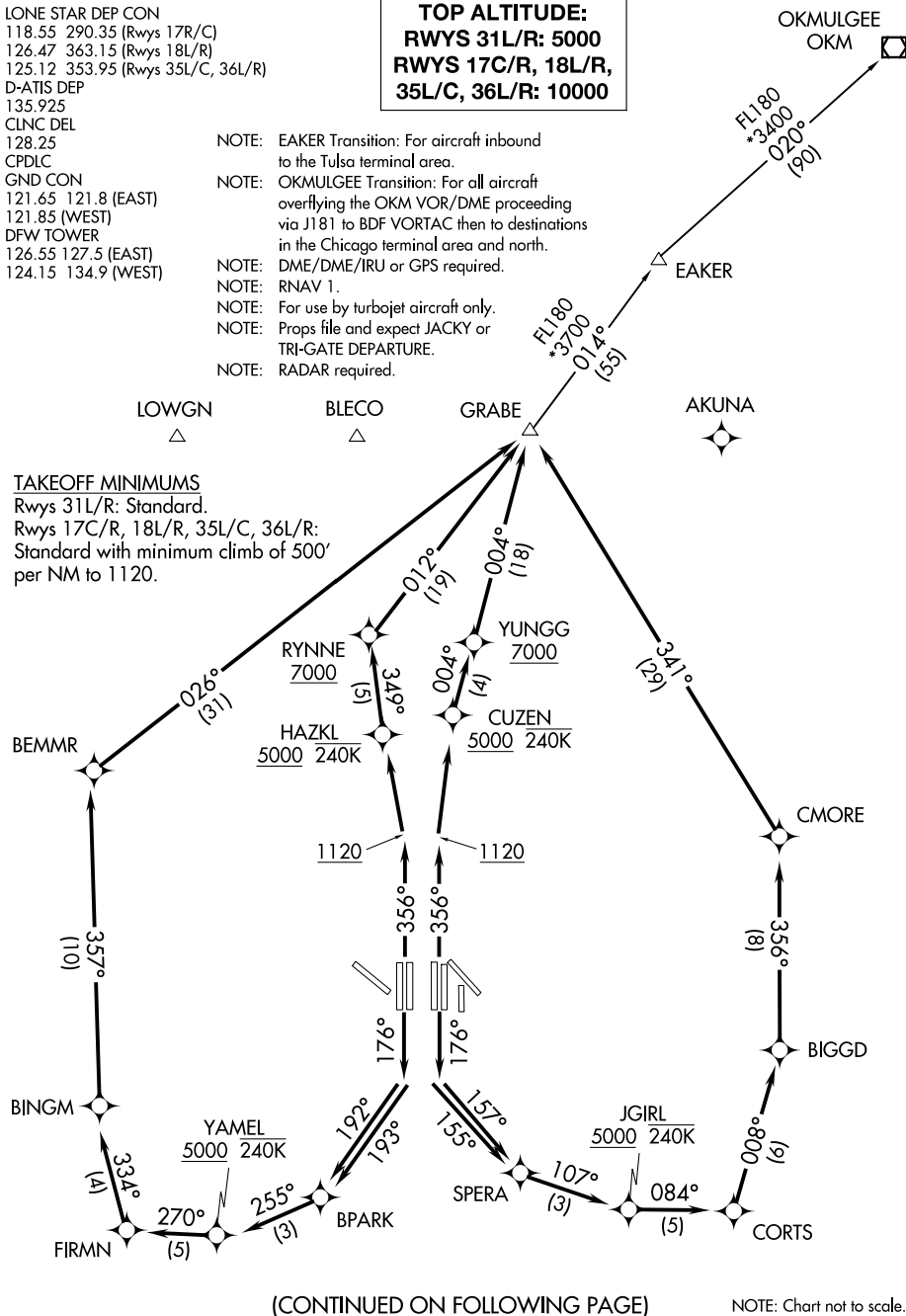
**TOP ALTITUDE:  
RWYS 31L/R: 5000  
RWYS 17C/R, 18L/R,  
35L/C, 36L/R: 10000**

LONE STAR DEP CON  
118.55 290.35 (Rwys 17R/C)  
126.47 363.15 (Rwys 18L/R)  
125.12 353.95 (Rwys 35L/C, 36L/R)  
D-ATIS DEP  
135.925  
CLNC DEL  
128.25  
CPDLC  
GND CON  
121.65 121.8 (EAST)  
121.85 (WEST)  
DFW TOWER  
126.55 127.5 (EAST)  
124.15 134.9 (WEST)

- NOTE: EAKER Transition: For aircraft inbound to the Tulsa terminal area.
- NOTE: OKMULGEE Transition: For all aircraft overflying the OKM VOR/DME proceeding via J181 to BDF VORTAC then to destinations in the Chicago terminal area and north.
- NOTE: DME/DME/IRU or GPS required.
- NOTE: RNAV 1.
- NOTE: For use by turbojet aircraft only.
- NOTE: Props file and expect JACKY or TRI-GATE DEPARTURE.
- NOTE: RADAR required.

### TAKEOFF MINIMUMS

Rwys 31L/R: Standard.  
Rwys 17C/R, 18L/R, 35L/C, 36L/R:  
Standard with minimum climb of 500'  
per NM to 1120.



(CONTINUED ON FOLLOWING PAGE)

NOTE: Chart not to scale.

# GRABE EIGHT DEPARTURE (RNAV)

(GRABE8.GRABE) 29MAR18

DALLAS-FORT WORTH, TEXAS  
DALLAS-FORT WORTH INTL (DFW)

SC-2, 28 NOV 2024 to 26 DEC 2024

SC-2, 28 NOV 2024 to 26 DEC 2024



DEPARTURE ROUTE DESCRIPTION

TAKEOFF RWY 17C: Climb heading 176° to intercept course 157° to SPERA, then on track 107° to cross JGIRL at or above 5000, then on depicted route to GRABE, thence. . . .

TAKEOFF RWY 17R: Climb heading 176° to intercept course 155° to SPERA, then on track 107° to cross JGIRL at or above 5000, then on depicted route to GRABE, thence. . . .

TAKEOFF RWY 18L: Climb heading 176° to intercept course 193° to BPARK, then on track 255° to cross YAMEL at or above 5000, then on depicted route to GRABE, thence. . . .

TAKEOFF RWY 18R: Climb heading 176° to intercept course 192° to BPARK, then on track 255° to cross YAMEL at or above 5000, then on depicted route to GRABE, thence. . . .

TAKEOFF RWYS 35L/C: Climb heading 356° to 1120, then direct CUZEN, cross CUZEN at or above 5000, then on track 004° to cross YUNGG at or above 7000, then on depicted route to GRABE, thence. . . .

TAKEOFF RWYS 36L/R: Climb heading 356° to 1120, then direct HAZKL, cross HAZKL at or above 5000, then on track 349° to cross RYNNE at or above 7000, then on depicted route to GRABE, thence. . . .

. . . .on (transition) maintain 10000. Expect filed altitude ten minutes after departure.

TAKEOFF RWYS 31L/R: Climb heading assigned by ATC, expect RADAR vectors to GRABE, thence. . . .

. . . .on (transition) maintain 5000. Expect filed altitude ten minutes after departure.

EAKER TRANSITION (GRABE8.EAKER)  
OKMULGEE TRANSITION (GRABE8.OKM)

SC-2, 28 NOV 2024 to 26 DEC 2024

SC-2, 28 NOV 2024 to 26 DEC 2024