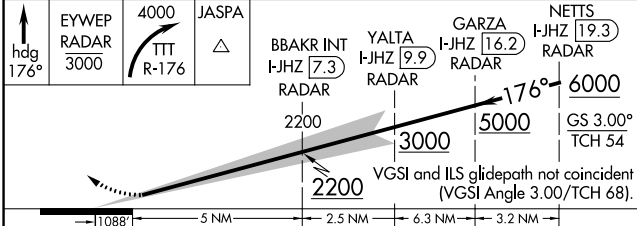
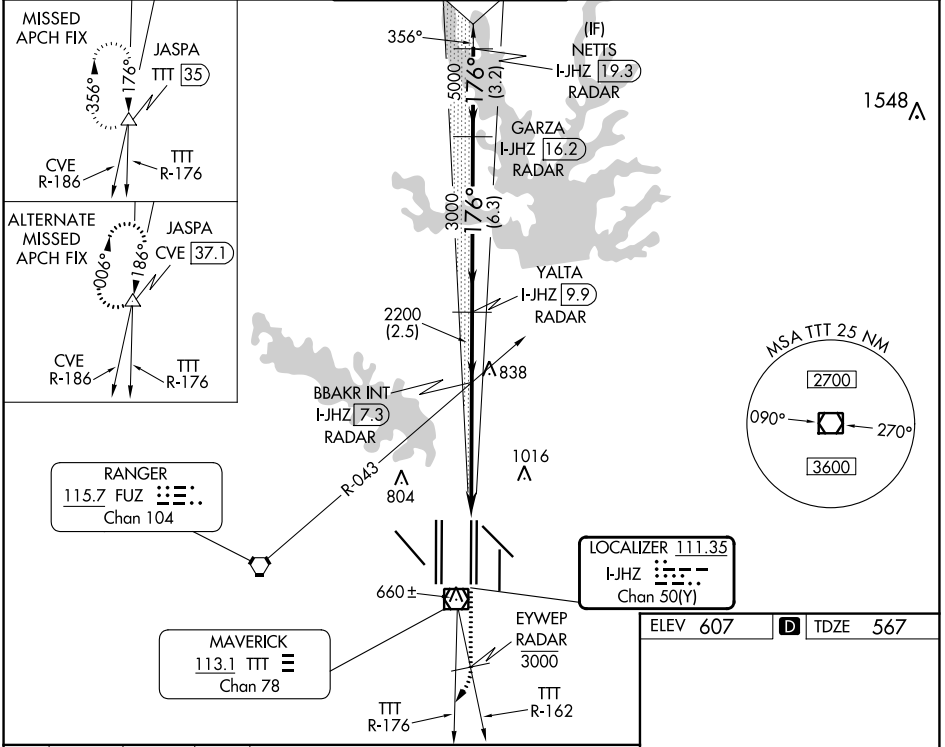


LOC/DME I-JHZ 111.35 Chan 50(Y)	APP CRS 176°	Rwy Idg 13400 TDZE 567 Apt Elev 607
---	------------------------	---

ILS RWY 17R (SA CAT I & CAT II)

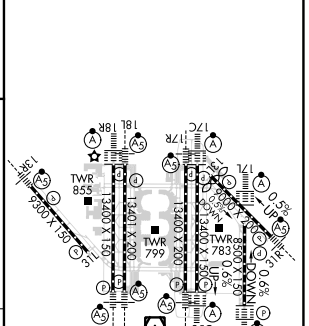
DALLAS-FORT WORTH INTL (DFW)

DME and RADAR required.		MALSR	MISSED APPROACH: Climb on heading 176° to cross EYWEP/RADAR at or below 3000, then climbing right turn to 4000 on TTT VOR/DME R-176 to JASPA/TTT 35 DME and hold.		
▼ SA Cat I: Requires specific OPSPEC, MSPEC, or LOA approval and use of HUD to DH. SA Cat II: Reduced lighting; requires specific OPSPEC, MSPEC, or LOA approval and use of Autoland or HUD to touchdown. Simultaneous approach authorized with Rwy 17L, 18L/R.		AS			
D-ATIS ARR 123.775 DEP 135.925	LONE STAR APP CON 127.075	DFW TOWER 126.55 127.5 EAST 124.15 134.9 WEST	GND CON 121.65 121.8 EAST 121.85 WEST	CLNC DEL 128.25	CPDLC



CATEGORY	A	B	C	D
S-ILS 17R	SA CAT I	RA 160/14	150 DA 717	
S-ILS 17R	SA CAT II	RA 98/12	100 DA 667	

ELEV 607	D	TDZE 567
----------	---	----------



HIRL all Rwys
REIL Rwy 13L and 31L
TDZ/CL all Rwy except 13L and 31L

SA CATEGORY I & II ILS SPECIAL AIRCREW & AIRCRAFT CERTIFICATION REQUIRED

SC-2, 28 NOV 2024 to 26 DEC 2024

SC-2, 28 NOV 2024 to 26 DEC 2024