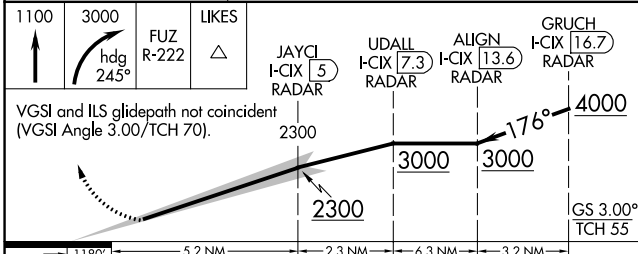
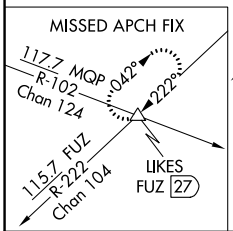
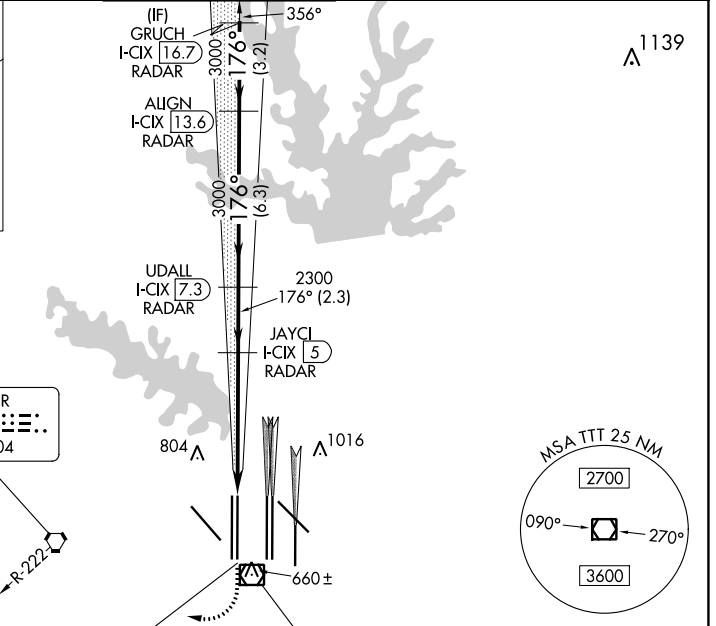
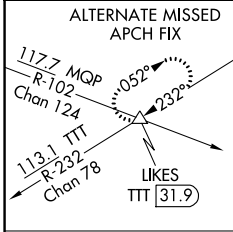


LOC/DME I-CIX 110.55 Chan 42(Y)	APP CRS 176°	Rwy Idg TDZE Apt Elev	13401 602 606
---	------------------------	-----------------------------	--

ILS RWY 18L (SA CAT I & II)

DALLAS-FORT WORTH INTL (DFW)

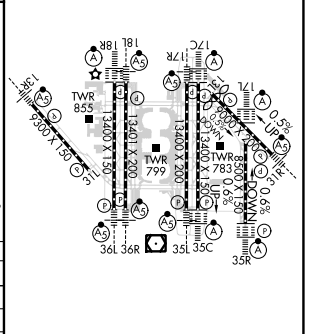
RADAR required for procedure entry. DME or RADAR required.		MALSR 	MISSED APPROACH: Climb to 1100, then climbing right turn to 3000 on heading 245° and FUZ VORTAC R-222 to LIKES INT/FUZ 27 DME and hold.		
D-ATIS ARR DEP	LONE STAR APP CON	DFW TOWER EAST WEST	GND CON EAST WEST	CLNC DEL	CPDLC
123.775 135.925	118.425	126.55 127.5 124.15 134.9	121.65 121.8 121.85 WEST	128.25	



1180	5.2 NM	2.3 NM	6.3 NM	3.2 NM
CATEGORY	A	B	C	D
S-ILS 18L	SA CAT I	RA 158/14	150 DA 752	
S-ILS 18L	SA CAT II	RA 115/12	100 DA 702	

SA CATEGORY I & II ILS - SPECIAL AIRCREW & AIRCRAFT CERTIFICATION REQUIRED

ELEV 606	TDZE 602
----------	----------



HIRL all Rws
REIL Rws 13L and 31L
TDZ/CL all Rws except 13L and 31L

SC-2, 28 NOV 2024 to 26 DEC 2024

SC-2, 28 NOV 2024 to 26 DEC 2024