

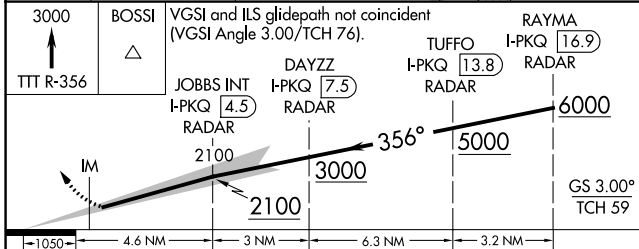
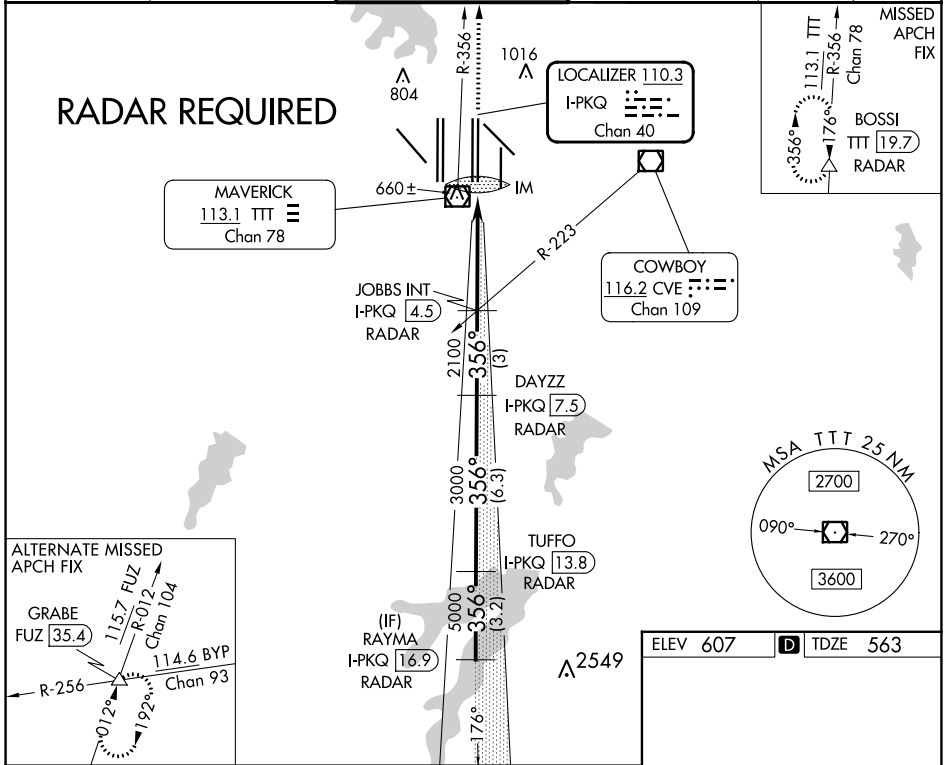
LOC/DME I-PKQ 110.3 Chan 40	APP CRS 356°	Rwy Idg TDZE Apt Elev	13400 563 607
--	------------------------	-----------------------------	--

ILS RWY 35C (SA CAT I)

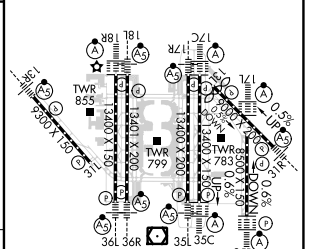
DALLAS-FORT WORTH INTL (DFW)

D-ATIS ARR 123.775 DEP 135.925	LONE STAR APP CON 127.075	DFW TOWER		GND CON 121.65 121.8 EAST 121.85 WEST	CLNC DEL 128.25	CPDLC
		126.55 127.5 EAST 124.15 134.9 WEST				

ALSF-2 	MISSED APPROACH: Climb to 3000 on TTT VOR/DME R-356 to BOSSI/TTT 19.7 DME/RADAR and hold.
------------	---



ELEV 607	D TDZE 563
----------	-------------------



CATEGORY	A	B	C	D
S-ILS 35C	RA 153/14		150 DA 713	

SA CATEGORY I ILS - SPECIAL AIRCREW & AIRCRAFT CERTIFICATION REQUIRED

HIRL all Rwys
REIL Rwys 13L and 31L
TDZ/CL all Rwys except 13L and 31L

SC-2, 28 NOV 2024 to 26 DEC 2024

SC-2, 28 NOV 2024 to 26 DEC 2024