

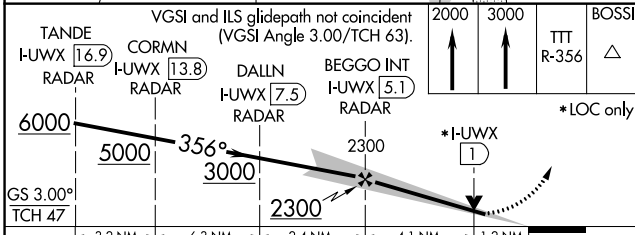
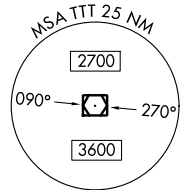
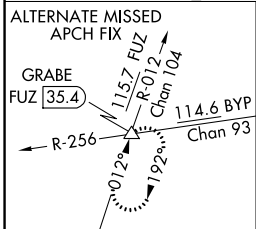
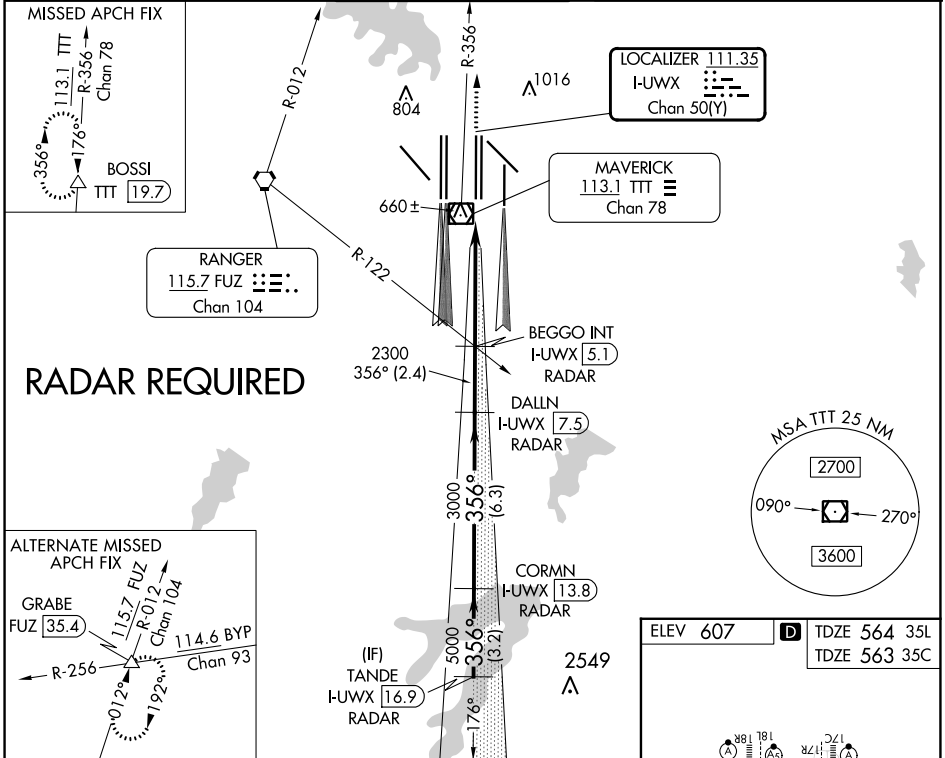
LOC/DME I-UWX 111.35 Chan 50 (Y)	APP CRS 356°	Rwy Idg 35L 35C TDZE 564 563 Apt Elev 607 607
--	------------------------	--

ILS or LOC RWY 35L

DALLAS-FORT WORTH INTL (DFW)

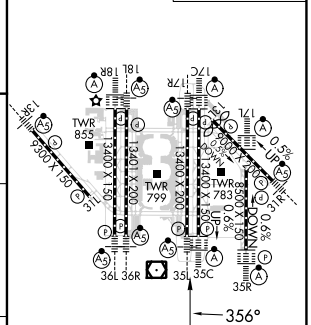
DME or RADAR required. Simultaneous approach authorized with Rwy 36 L/R and Rwy 35R. Inop table does not apply to Sidestep Rwy 35C.	Rwy 35L MALS 	Rwy 35C ALSF-2 	MISSED APPROACH: Climb to 2000 then climb to 3000 on TTT VOR/DME R-356 to BOSSI/TTT 19.7 DME and hold.
---	---------------------	-----------------------	--

D-ATIS ARR 123.775 DEP 135.925	LONE STAR APP CON 127.075	DFW TOWER 126.55 127.5 EAST 124.15 134.9 WEST	GND CON 121.65 121.8 EAST 121.85 WEST	CLNC DEL 128.25	CPDLC
--	-------------------------------------	---	---	---------------------------	-------



TANDE I-UWX 16.9 RADAR CORMN I-UWX 13.8 RADAR DALLN I-UWX 7.5 RADAR BEGGO INT I-UWX 5.1 RADAR TTT R-356 BOSSI Δ	VGSi and ILS glidepath not coincident (VGSi Angle 3.00/TCH 63).	2000 3000 TTT R-356 BOSSI Δ			
CATEGORY S-ILS 35L S-LOC 35L SIDESTEP 35C	A 1000/24 436 (400-1)	B 764/18 200 (200-1/2)	C 1000/40 436 (400-3/4)	D 1000-1 437 (400-1)	1000-2 437 (400-2)

ELEV 607	D TDZE 564 35L
	TDZE 563 35C



HIRL all Rwys					
REIL Rwys 13L and 31L					
TDZ/CL all Rwys except 13L, and 31L					
FAF to MAP 5.3 NM					
Knots	60	90	120	150	180
Min:Sec	5:18	3:32	2:39	2:07	1:46

SC-2, 28 NOV 2024 to 26 DEC 2024

SC-2, 28 NOV 2024 to 26 DEC 2024