

LOC/DME I-BXN 111.9 Chan 56	APP CRS 356°	Rwy Idg 36L 36R 13400 13401 TDZE 588 581 Apt Elev 606 606
---	------------------------	---

ILS or LOC RWY 36L

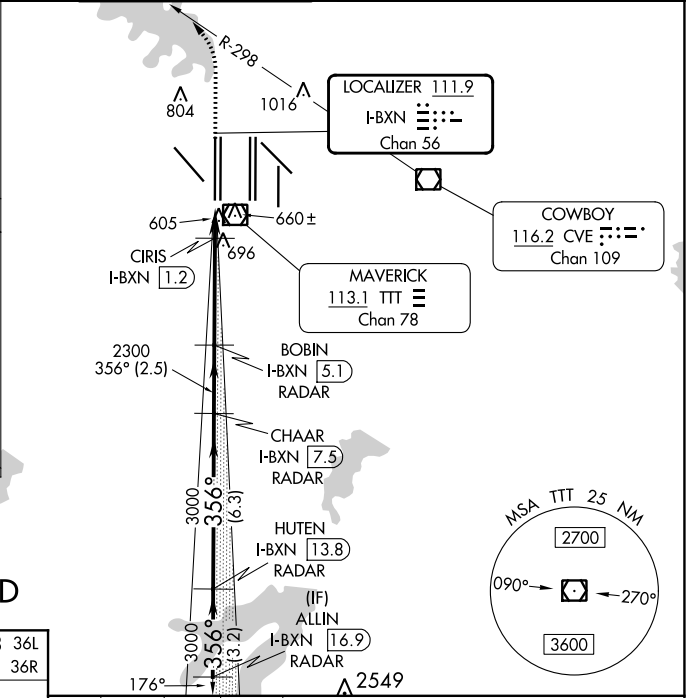
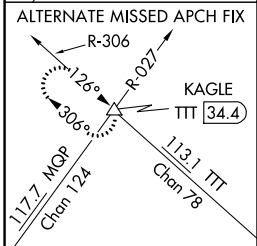
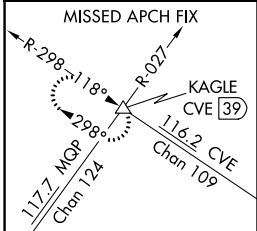
DALLAS-FORT WORTH INTL (DFW)

▼ Inop table does not apply to Sideslip 36R. Simultaneous approach authorized with Rwy 35L/C/R. DME or RADAR required. For inop ALS, increase S-LOC 36L Cat C and D visibility to 1½ SM. For inop ALS, increase CIRIS fix minimums (DME required) S-LOC 36L Cats C and D visibility to RVR 5500.



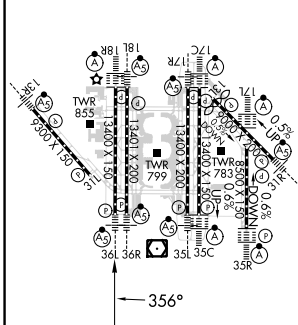
MISSED APPROACH: Climb to 1100 then climbing left turn to 3000 on heading 315° and CVE VOR/DME R-298 to KAGLE INT/ CVE VOR/DME 39 DME and hold.

D-ATIS ARR 123.775 DEP 135.925	LONE STAR APP CON 118.425	DFW TOWER 126.55 127.5 EAST 124.15 134.9 WEST	GND CON 121.65 121.8 EAST 121.85 WEST	CLNC DEL 128.25	CPDLC
--	-------------------------------------	---	---	---------------------------	-------



RADAR REQUIRED

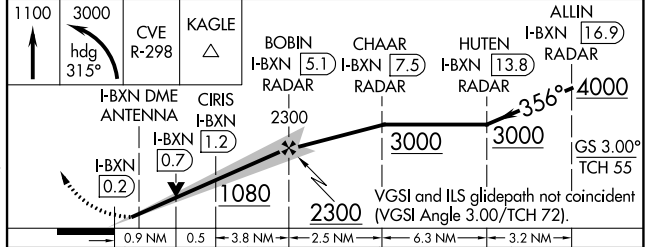
ELEV 606	D	TDZE 588 36L TDZE 581 36R
-----------------	----------	--



REIL Rwy 13L and 31L
TDZ/CL all Rwy except 13L and 31L

FAF to MAP 5.2 NM

Knots	60	90	120	150	180
Min:Sec	5:12	3:28	2:36	2:05	1:44



CATEGORY	A	B	C	D
S-ILS 36L	788/18 200 (200-½)			
S-LOC 36L	1080/24	492 (500-½)	1080/50	492 (500-1)
SIDESTEP 36R	1080/50	499 (500-1)	1080-1½	499 (500-1½)
CIRIS FIX MINIMUMS (DME required)				
S-LOC 36L	940/24	352 (400-½)	940/30	352 (400-¾)